

Add-on Application Guide

Personal Entertainment Organizer

CLiÉ

PEG-N610C

Chapter 1

Viewing image files
(PictureGear Pocket)

Chapter 2

Playing a movie
(gMovie player)

Chapter 3

Setting the "Memory
Stick" automatic start
function (MS Autorun)

Chapter 4

Copying the data to the
"Memory Stick" media on
your CLiÉ handheld (MS
Import/Export)

On the supplied software

- Copyright laws prohibit reproducing the software or the software manual in whole or in part, or renting the software without the permission of the copyright holder.
- In no event will SONY be liable for any financial damage or loss of profits, including claims made by third parties, arising out of the use of the software supplied with this player.
- In the event a problem occurs with this software as a result of defective manufacturing, SONY will replace it at SONY's option or issue a refund. However, SONY bears no other responsibility.
- The software provided with this player cannot be used with equipment other than that which it is designated for use with.
- Please note that, due to continued efforts to improve quality, the software specifications may be changed without notice.

Program © 2001 Sony Corporation, © 2001 Palm, Inc. or its subsidiaries. All rights reserved.

Documentation © 2001 Sony Corporation

Sony, Memory Stick, the Memory Stick logo, OpenMG, and PictureGear are trademarks of Sony Corporation.

Walkman is a registered trademark of Sony Corporation

Graffiti, HotSync, PalmModem, and Palm OS are registered trademarks, and the HotSync logo and Palm are trademarks of Palm, Inc. or its subsidiaries.

IBM and PC/AT are registered trademarks of International Business Machines Corporation.

Microsoft, Windows, Outlook and the Windows 98 logo are registered trademarks of Microsoft Corporation.

MMX and Pentium are registered trademarks of Intel Corporation.

AvantGo, the AvantGo Client and the AvantGo logo are registered trademarks of AvantGo, Inc.

Pumatech, the Pumatech log, Intellisync and Intellisync Lite are trademarks of Pumatech, Inc. that may be registered in some jurisdictions.

QuickTime and the QuickTime logo are trademarks used under license. QuickTime is registered in the U.S. and other countries.

This product includes fonts owned by TypeBank Co., Ltd. under license.

All other trademarks are trademarks of their respective owners.

CAUTION

Please contact your nearest Sony dealer regarding the problem you are experiencing with your Sony product.

Table of contents

Chapter 1

Viewing image files (PictureGear Pocket)	
What you can do with PictureGear Pocket	6
Installing	7
Installing the PictureGear Pocket application to your CLIE handheld	7
Installing the PictureGear 4.4Lite software to your computer	8
Viewing image files stored in your CLIE handheld	9
Transferring image files to your CLIE handheld	9
Viewing image files with your CLIE handheld	11
Viewing image files stored in “Memory Stick” media	15
Copying image files	17
Saving image files stored on your CLIE handheld to a “Memory Stick” media (Export)	17
Saving image files stored on a “Memory Stick” media to your CLIE handheld (Import)	18
Displaying image files one after another (PhotoStand)	20
Making a PhotoStand setting	20
Using PhotoStand	21
Viewing sample image files	22
How to read the online manual	23
PictureGear Pocket menu items	24

Chapter 2

Playing a movie (gMovie player)	
What you can do with gMovie player software	28
Installing	29
Install PictureGear 4.4Lite software to your computer	29
Playing movies with your CLIE handheld	30
Transferring movies to your CLIE handheld	30
Playing movies	32
Playing sample movie files	34
How to read the online manual	35
gMovie software menu items	36

Chapter 3

Setting the “Memory Stick” automatic start function (MS Autorun)	
What you can do with the MS Autorun application	38
Setting Auto-run for an Application	40
How to read the online manual	42

Chapter 4

Copying the data to the “Memory Stick” media on your CLIE handheld (MS Import/Export)	
What you can do with MS Import/ Export application	44
Installing	45
Installing CLIE applications using MS Import/Export	46
Using your CLIE handheld as a removable disk	48
How to read the online manual	49

About this manual

Welcome to the Sony Personal Entertainment Organizer (referred to as the “Sony CLIE Handheld” or “CLIE handheld” in this manual).

Your Sony CLIE Handheld comes with three manuals:

Read This First

The Read This First manual gives an overview of your CLIE handheld’s features, hardware and software setup, installation instructions, and other important details. Before reading the other manuals, read the Read This First manual.

Operating Instructions

The Operating Instructions manual describes all you need to know about how to use your CLIE handheld and the Personal Information Management (PIM) applications that come with it.

This manual shows you how to:

- Turn on and off your CLIE handheld, reset the CLIE handheld, and enter data in greater detail (**Chapter 1**)
- Use the Personal Information Management applications: Date Book, Address Book, To Do List, Memo Pad, Expense, and Calculator (**Chapter 2**)
- Perform a HotSync operation with your computer (**Chapter 3**)
- Exchange data with another handheld by beaming or via “Memory Stick” media (**Chapter 4**)
- Personalize your CLIE handheld with your own preferences settings (**Chapter 5**)
- Maintain your CLIE handheld and use the Troubleshooting guide and other technical information (**Chapter 6**)

Add-on Applications Guide (this manual)

The Add-on Applications Guide describes how to install and use the supplied add-on applications which include:

- PictureGear Pocket/PhotoStand/PictureGear 4.4Lite
- gMovie
- MS Autorun
- MS Export/Import

Chapter 1

Viewing image files (PictureGear Pocket)

This chapter explains how to view image files on your CLIE handheld.

What you can do with PictureGear Pocket

PictureGear Pocket is a picture album application for your CLIE Handheld.

Anytime anywhere...

Using PictureGear Pocket, you can store still image files from various sources including those taken with a digital camera or those downloaded from the Internet to your CLIE handheld. You can look at your favorite image files anytime and anywhere.

Using PictureGear Pocket as a photo stand or a clock

Using the photostand function, you can display image files that are drawn on a computer or image files taken with a digital camera. You can also use your CLIE handheld to display the current time on your CLIE handheld screen while using the photostand function.

Beaming my image files ...

Use IR (Infrared) communication to exchange image files easily with other CLIE handheld users. You cannot beam image files to other Palm OS based devices.

Pasting a image file to an address record

You can paste an image to address information. For details, refer to the Operating Instructions manual.

Installing

Installing the PictureGear Pocket application to your CLIE handheld

You can install PictureGear Pocket using the hard disk on your computer.

Place your CLIE handheld in the cradle, and then install the CLIE Palm Desktop software on your computer from the supplied CD-ROM.

- 1** Double-click the CLIE Palm Desktop icon on the Windows desktop.
The CLIE Palm Desktop software starts.
- 2** Click Install.
The Install Tool dialog box appears.
- 3** Select a user name from the user list.
- 4** Click Add.
Make sure that the Add-on folder is selected.
If the Add-on folder is not selected, select it manually.
At the default setup, the Add-on folder is stored in the Sony Handheld folder of the Program Files folder.
- 5** Double-click the PictureGear Pocket folder.
- 6** Click pgpocket.
pgpocket is added to the File Name list.
- 7** Repeat steps 4 and 5, and then click PhotoStand.prc and PSLaunch.prc.
PhotoStand.prc and PSLaunch.prc are added to the File Name list.
- 8** Click Done.
- 9** Press the HotSync button on the cradle.
Files specified in steps 6 and 7 are installed on your CLIE handheld during the HotSync operation.

Installing

Installing the PictureGear 4.4Lite software to your computer

You can convert the image files stored in your computer using PictureGear 4.4Lite. To view image files or movies with your CLIE handheld, use PictureGear Pocket or gMovie player.

- 1** Insert the Installation CD-ROM into the CD-ROM drive.
The installation launcher window appears.
- 2** Click CLIE Image Software.
The dialog box used to select an installation option appears.
- 3** Click Install PictureGear 4.4Lite.
A confirmation dialog box appears.
- 4** Click Yes.
The PictureGear 4.4Lite software installation starts.
Follow the instructions on-screen to finish installation.
- 5** Click Exit.

To start PictureGear 4.4Lite

From the Start Menu, click Programs, PictureGear 4.4Lite, and then PictureGear 4.4Lite.

For details on how to use PictureGear 4.4Lite, see the Help files of the PictureGear 4.4Lite software.

Viewing image files stored in your CLIE handheld

You can transfer image files taken by a digital still camera or downloaded from the Internet, etc. These items can be managed using the PictureGear 4.4Lite software on your computer. You can also prepare optimize photos to display on your CLIE handheld using PictureGear 4.4Lite software before transferring them to your CLIE handheld.

For details on how to save image files in the format supported by PictureGear 4.4Lite software, refer to the instruction manual of the devices or imaging software you are using.

Transferring image files to your CLIE handheld

Prepare image files you want to display on your CLIE handheld, and then transfer them to your CLIE handheld.

- 1 Start PictureGear 4.4Lite.**
See page 8 for details.
- 2 Select the image file you want to send.**
You can also select multiple images by holding down the Ctrl or Shift keys while clicking.
- 3 From the File menu, select Output services and then Install the image during the next HotSync.**
The User name dialog box appears.
- 4 Click the arrow ▼ to the right of the text box, and then select a user name.**
If necessary, click "Still settings" and make size and compression settings for the image file you want to send in the Settings for PictureGear dialog box.
- 5 Click OK.**
The image file you want to send and the user name are registered in PictureGear.
- 6 Place your CLIE handheld in the cradle, then press the HotSync button on the cradle.**
The registered image file(s) are automatically sent to your CLIE handheld during the HotSync operation.

Viewing image files stored in your CLIE handheld

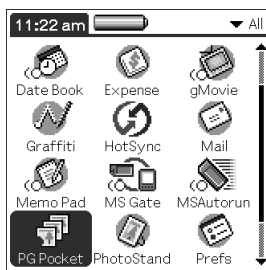
When you want to save an image file to “Memory Stick” media

You can also transfer image files to “Memory Stick” media directly. Select Output CLIE Handheld format file to Memory Stick in step 3 on page 9.

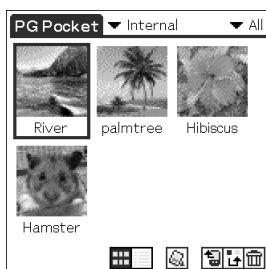
To view image files stored in “Memory Stick” media, see page 15.

Viewing image files with your CLIE handheld

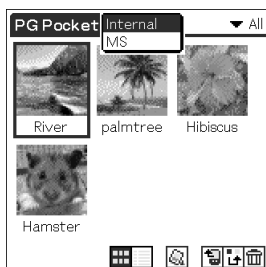
- 1 On the home screen, rotate the Jog Dial navigator to select PG Pocket and then press the Jog Dial navigator. Or, tap the PG Pocket icon on the home screen.



PictureGear Pocket starts.



- 2 Tap the arrow ▼ on the top center of the screen to select Internal.

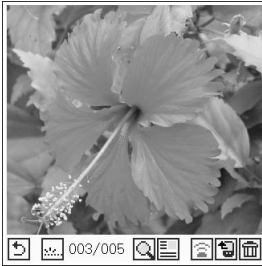



Viewing image files stored in your CLIE handheld

- 3 Rotate the Jog Dial navigator to display the desired image file, then press the Jog Dial navigator.

Or, tap the desired image directly.

The selected image appears.



- 4 When you want to hide icons displayed on the bottom of your CLIE handheld screen, tap  (hide icons).

When you want to display them again, tap the screen, or press the Jog Dial navigator or the BACK button.


- 5 When you want to show another image file, rotate the Jog Dial navigator.

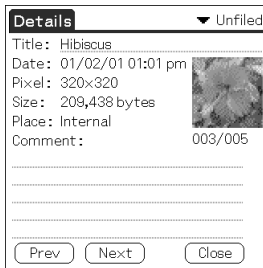
Another image file appears.

- 6 To return to the photo list screen, tap the screen anywhere you want, or press the Jog Dial navigator or the BACK button.

To return from the detailed information screen to the image file list screen, tap Close on the lower left of the screen or press the BACK button.


Viewing detailed information for the image file

Tap  (detailed) while the image file is displayed.
Detailed information for the image file appears.



Show detailed information

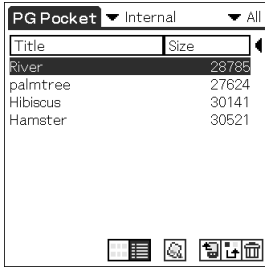
Magnifying image files

- 1** Tap  while the image file is displayed.
- 2** Rotate the Jog Dial navigator to magnify the image file.
When you press the Jog Dial navigator, the image file is automatically magnified on the screen.
If you rotate the Jog Dial navigator clockwise after pressing it, the image is magnified to maximum size. If you rotate the Jog Dial navigator counter-clockwise, the image is reduced to minimum size.
- 3** When you want to see the rest of the image that is not currently displayed on the screen, scroll down or up, as necessary.
- 4** To return to the photo list screen, press the BACK button.

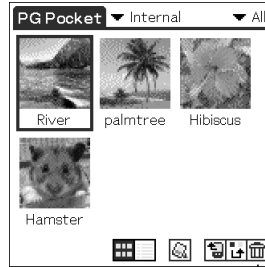
Viewing image files stored in your CLIE handheld

Changing the image file list screen

You can change the image file list screen to display items by name and date, or by thumbnail image.



By name and date
(List mode)




By thumbnail image
(Preview mode)

To display the image file list by name and date (List mode)

Tap .

To display the image file list by thumbnail image (Preview mode)

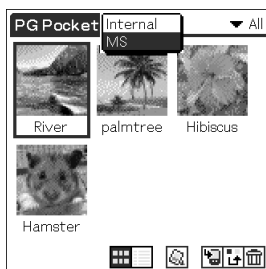
Tap .

Viewing image files stored in “Memory Stick” media

Image files shot by a digital still camera or digital video camera recorder and recorded in a “Memory Stick” media are stored in the DCF format. This format differs from the PGP format which is standard for PictureGear Pocket software.

You can view both PGP format image files and DCF format image files using PictureGear Pocket. In addition, you can convert DCF format image files into PGP format image files, and save them to your CLIE handheld or “Memory Stick” media.

- 1** On the home screen, rotate the Jog Dial navigator to select PG Pocket and then press the Jog Dial navigator.
Or, tap the PG Pocket icon on the home screen.
PictureGear Pocket starts.
- 2** Insert the “Memory Stick” media into the “Memory Stick” slot.
- 3** Tap the arrow ▼ on the top center of the screen to select MS.

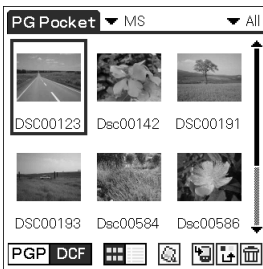


Continued on next page

Viewing image files stored in “Memory Stick” media

- 4** If you want to view DCF image files taken by digital still cameras etc., tap DCF.

If you want to view image files converted by the PictureGear Pocket or PictureGear 4.4Lite software, tap PGP.



Note


You cannot move, copy or transfer DCF format image files using the MS Gate application. However, you can convert them into PGP format image files using PictureGear Pocket, and save them to your CLIE handheld.

Notes on DCF format

- DCF (Design rule for Camera File system) is an industry standard format for storing image files established by JEIDA (Japan Electronic Industry Development Association).
- Using the PictureGear Pocket application, you cannot view image files shot by a device that does not support the DCF format such as the Sony digital video camera recorder DCR-TRV9000 or Sony digital still camera DSC-D700/D770.
- DCF format image files are stored in the DCIM directory of the “Memory stick” media.
- In order to display clearer pictures with PictureGear Pocket, it is recommended that you use PictureGear 4.4Lite on your computer when converting the image files to PGP format before storing them in a “Memory stick” media.

Copying image files


Saving image files stored on your CLIE handheld to a “Memory Stick” media (Export)

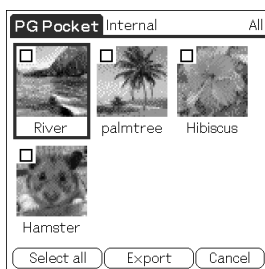
- 1** Display the image file you want to save to a “Memory Stick” media. (page15)
- 2** Tap  (Import/Export).
The Import/Export screen appears.
 - To change the category of the image files, tap the arrow ▼ and select the desired category.
 - If you want to delete the original image file stored on your CLIE handheld, tap to select Delete the original image.
- 3** Tap OK.
The selected image file is converted to the PGP format and saved to the “Memory Stick” media.

To cancel the operation

Tap Cancel in step 3 above.

Saving multiple image files in a “Memory Stick” media at one time

- 1** In the photo list screen, tap  (Import/Export).
The check boxes used to select image files appear.




- 2** Tap the check box to select the image file you want to save.

Continued on next page

Copying image files

- 3** Tap Export.
The export screen appears.
- 4** Tap OK.


Saving image files stored on a “Memory Stick” media to your CLIE handheld (Import)

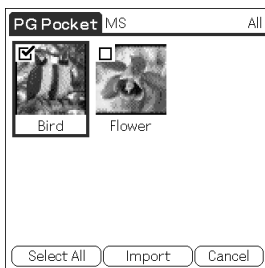
- 1** Display the image file you want to save.
- 2** Tap  (Import/Export).
The import screen appears.
 - **When you want to save a PGP format image file**
To change the category of the image files, tap the arrow ▼ and select the desired category.
If you want to delete the original image file stored in a “Memory Stick” media, tap to select Delete the original image.
 - **When you want to save a DCF format image file**
To change the number of colors of the image, tap to select 16-bit or 8-bit colors.
- 3** Tap OK.
The selected image file is converted to the PGP format and saved to the CLIE handheld. It may take a few seconds to save the image depending on the image file.

To cancel the operation

Tap Cancel in step 3 above.

Saving multiple DCF image files to your CLIE handheld at one time

- 1** In the photo list screen, tap  (Import/Export).
The check boxes used to select image files appear.




- 2** Tap the check box to select the image file you want to save.
- 3** Tap Import.
The import screen appears.
- 4** Tap OK.
The selected image file is converted to the PGP format and then saved to your CLIE handheld. Depending on the image file, it may take a few seconds to save the image.

Displaying image files one after another (PhotoStand)

You can display image files one after another when you place your CLIE handheld in the cradle (PhotoStand function).

You can also use your CLIE handheld as a clock by displaying the current time using the PhotoStand application.

Making a PhotoStand setting

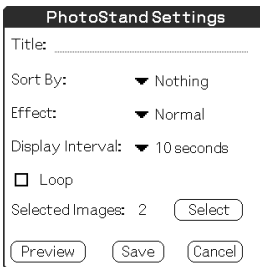
- 1** In the photo list screen of PictureGear Pocket, tap  (PhotoStand).

The check boxes used to select image files appear.

- 2** Tap to select the image file(s) which you want to display with the Photo Stand function.

- 3** Tap PhotoStand.

The PhotoStand application starts, and the Settings screen appears.



- 4** Make your settings.

- **Title:** enter the desired Photo Stand title.
- **Sort By:** select the order in which to display the image files.
- **Effect:** select the transition effect to be used between images or the clock type.
- **Display Interval:** set an interval to determine the length of time an individual image file will be displayed.

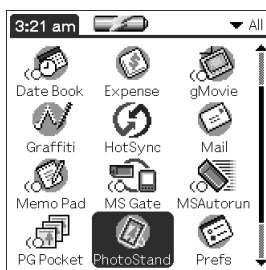
- **Loop:** if you want to repeat image files automatically from the start, tap to select this check box.
- **Auturun:** if you want to start PictureGear Pocket when you insert the “Memory Stick” media into your CLIE handheld, tap to select this check box. This option appears only when you select the image stored in the “Memory Stick” media for the PhotoStand.

5 Tap Save.

The image files that you selected in Step 2 and the settings you made in Step 4 are saved with a PhotoStand title.

Using PhotoStand

- 1 On the home screen, rotate the Jog Dial navigator to select PhotoStand and then press the Jog Dial navigator. Or, tap the PhotoStand icon on the home screen.



PhotoStand starts.

- 2 Tap the PhotoStand title you want to play.
- 3 Tap Start.

Image files in the selected category appear one after another.

Exiting the PhotoStand

Press the Jog Dial navigator or tap the screen.

If you created the PhotoStand show on the “Memory Stick” media

You will select to “▼MS” in PhotoStand.

Viewing sample image files

You can view sample image files installed on your computer.

Install the CLIE Palm Desktop software to your hard disk using the supplied CD-ROM and then place your CLIE handheld in the cradle.

1 Double-click the Palm Desktop for CLIE icon on the Windows desktop.

The Palm Desktop for CLIE software starts.

2 Click Install.

The Install Tool dialog box appears.

3 Select a user name from the user list.

4 Click Add.

Make sure that the Add-on folder is selected.

If the Add-on folder is not selected, select the folder manually.

At the default setup, Add-on folder is stored in the Sony Handheld folder of the Program Files folder.

5 Double-click the PG Pocket samples folder.

6 Double-click the sample image file you want to view on the screen of your CLIE handheld.

The selected image file name is added to the File Name list.

If you want to view other sample images, repeat this step.

7 Click Done.

8 Press the HotSync button on the cradle.

The selected sample image files will be installed on your CLIE handheld.

9 Start PictureGear Pocket.

For details, see page 11.

How to read the online manual

Detailed information of the PictureGear Pocket application is provided in the online manual in the supplied CD-ROM.

To see the online manual, the Adobe Acrobat Reader software must be installed on your computer.

- 1** Insert the supplied CD-ROM into your computer's CD-ROM drive.

The install screen appears automatically.

- 2** Click Manuals.

- 3** Double-click PictureGear Pocket Manual.pdf.

The online manual appears.

If the Acrobat Reader software is not installed

- 1** Insert the supplied CD-ROM into your computer's CD-ROM drive.

The install screen appears automatically.

- 2** Click Exit.

- 3** Double-click the My Computer icon on the Windows desktop.

- 4** Right-click the CD-ROM drive icon, and then click Open from the shortcut menu.

- 5** Click the PC folder.

- 6** Double-click the Acrobat folder.

- 7** Double-click ar500enu.exe to install the Acrobat Reader onto your computer.

PictureGear Pocket menu items

The following items appear when you tap the MENU icon.

This section explains the menu commands specific to PictureGear Pocket. See “Using the Edit menu ” in the Operating Instructions manual.

Photo list screen

View menu

List

Changes the view of the photo list screen.

PhotoStand

Starts the Photostand application.

Image menu

Import/Export

Shows the Imports/Export screen.

Tap to select the image file(s) you want to import/export. For details, see “Copying image files” on page 17.

Delete

Shows the Imports/Export screen.

Tap to select the image file(s) you want to delete. For details, refer to the online manual.

Categorize

Shows the Categorize screen.

Tap to select the image file(s) you want to categorize. For details, refer to the online manual.

Options menu

Preference (available only when you view image files stored in the “Memory Stick” media)

Shows the Preference screen.

Tap to select the default image format.

Version information

Shows the version information of PictureGear Pocket.

Image file screen

View menu

Back

Returns to the Photo list screen.

Detail Info.

Shows detailed information for the image file.

Zoom

Magnifies the image file. For details, see “Magnifying image files” on page 13.

First Image

Shows the first image file.

Prev Image

Shows the previous image file.

Next Image

Shows the next image file.

Last Image

Shows the last image file.

Show/Hide tool bar

Shows/hides the toolbar on the bottom of the screen.

Continued on next page

PictureGear Pocket menu items

Image menu

Import/Export

Imports/exports the currently selected image file. For details, see “Copying image files” on page 17.

Delete

Deletes the currently selected image file. For details, refer to the online manual.

Beam

Beams the currently selected image file to another CLIE handheld.

Options menu

Preference

Shows the Preference screen.

About PictureGear Pocket

Shows the version information of PictureGear Pocket.

Chapter 2

Playing a movie (gMovie player)

This chapter explains how to play a movie on your CLIE handheld.

What you can do with gMovie player software

gMovie is an add-on application which allows you to display or play back movie file created with Windows® applications such as PictureGear 4.4Lite, on your CLIE handheld.

Playing movies on your CLIE handheld

You can play a movie that has been converted to the proper format and then transferred from your computer, or stored in the “Memory Stick” media.

You can enjoy your favorite movies anytime, anywhere.

Installing

You do not have to install gMovie player on your CLIE handheld
The gMovie player application is factory pre-installed.

Install PictureGear 4.4Lite software to your computer

Install PictureGear 4.4Lite software to your computer according to the instructions on page 8.

Playing movies with your CLIE handheld

You can transfer movies shot by a digital still camera or downloaded from the Internet, etc., which are managed by the PictureGear 4.4Lite software on your computer. You will need to optimize movies on your CLIE handheld by the PictureGear 4.4Lite software before transferring. For details of operations or how to save the movies in the format which is supported by the PictureGear 4.4Lite, refer to the online Help of the PictureGear 4.4Lite.

Transferring movies to your CLIE handheld

Prepare the items you want to display on your CLIE handheld, and then transfer them to your CLIE handheld.

1 Start PictureGear 4.4Lite.

See page 8 for details.

2 Select the movie you want to send.

You can also select multiple movies by holding down the Ctrl or Shift keys while clicking.

3 From the File menu, select Output services and then Install the image during the next HotSync.

The User name dialog box appears.

4 Click the arrow ▼ to the right of the text box, and then select a user name.

If necessary, click Movie settings and make size and compression settings for the image you want to send in the “Settings for Movies on CLIE Handheld” dialog box.

5 Click OK.

The images you want to send and the user name are registered in PictureGear.

6 Place your CLIE handheld in the cradle, and then press the HotSync button on the cradle.

The registered images are automatically sent to your CLIE handheld during the HotSync operation.

When you want to save a movie to the “Memory Stick” media

You can also transfer a movie to the “Memory Stick” media directly. Select “Output CLIE format file to Memory Stick” in step 3 on page 30.

Playing movies with your CLIE handheld

Playing movies

- 1 On the home screen, rotate the Jog Dial navigator to select gMovie and then press the Jog Dial navigator.




Or, tap the gMovie icon on the home screen.
gMovie player starts and the movie list screen appears.

- 2 Tap the movie you want to play.
Playback starts.




To stop playback


Tap  (Stop).

To resume playback, tap  (Play).


To locate the start point of the movie

Tap  (Locate).


To return to the movie list screen


Tap  (Return) at the upper-right corner of the screen.


To play the next movie

Tap  (Next) at the upper-right corner of the screen.


To play movies one after another (continuous playback)

Tap  (Next) at the upper-right corner of the screen for a few seconds.

The icon changes into  (Continuous) and movies stored in your CLIE handheld are played one after another.

To return to the normal playback, tap  (Continuous) for a few seconds.

To delete a movie

- 1 Display the movie you want to delete, and then tap Menu .
- 2 Tap Delete.
- 3 Tap OK.
The selected movie is deleted, and then the movie list screen appears.

Playing sample movie files

You can view sample movie files installed on your computer.

Install the CLIE Palm Desktop software to your hard disk using the supplied CD-ROM and then place your CLIE handheld in the cradle.

- 1** Double-click the Palm Desktop for CLIE icon on the Windows desktop.

The Palm Desktop for CLIE software starts.

- 2** Click Install.

The Install Tool dialog box appears.

- 3** Select a user name from the user list.

- 4** Click Add.

Make sure that the Add-on folder is selected.

If the Add-on folder is not selected, select the folder manually.

At the default setup, Add-on folder is stored in the Sony Handheld folder of the Program Files folder.

- 5** Double-click the gMovie samples folder.

- 6** Double-click the sample movie file you want to play on the screen of your CLIE handheld.

The selected movie file name is added to the File Name list.

If you want to view other sample movies, repeat this step.

- 7** Click Done.

- 8** Press the HotSync button on the cradle.

The selected sample movie files will be installed on your CLIE handheld.

- 9** Start gMovie player.

For details, see page 32.

How to read the online manual

Detailed information on gMovie player software is provided in the online manual on the supplied CD-ROM.

To see the online manual, the Adobe Acrobat Reader software must be installed on your computer.

- 1** Insert the supplied CD-ROM into your computer's CD-ROM drive.

The install screen appears automatically.

- 2** Click Manuals.

- 3** Double-click gMovie Manual.pdf.

The online manual appears.

If the Acrobat Reader software is not installed

- 1** Insert the supplied CD-ROM into your computer's CD-ROM drive.

The install screen appears automatically.

- 2** Click Exit.

- 3** Double-click the My Computer icon on the Windows desktop.

- 4** Right-click the CD-ROM drive icon, and then click Open from the shortcut menu.

- 5** Click the PC folder.

- 6** Double-click the Acrobat folder.


- 7** Double-click ar500enu.exe to install the Acrobat Reader onto your computer.

gMovie software menu items

The following items appear when you tap the MENU icon on your CLIE handheld screen.


This section explains the menu commands specific to gMovie player.

Media menu

When you tap Menu  in the media list screen, following items appear.

About gMovie

Shows version information of the gMovie application.

When you tap Menu  in the movie file screen, following items appear.

Details

Shows detailed information on the current media.

Beam Media

Transfers the data contained in the current media to another CLIE handheld via the IR port. For details about beaming, see the Operating Instructions manual supplied with the CLIE handheld.



Delete

Deletes the current media. Tap OK in the Delete Media dialog box to perform deletion. Tap Cancel to cancel deletion.

Preferences

Displays options for movie playback option available:

- **Loop movie playback:** if you want to play the current movie file repeatedly, tap to select this check box.

When you tap to clear the check box, you cannot play the next movie file by tapping  (Next) at the upper-right corner of the screen. In this case, tap  (Play) manually to play the movie file.

About gMovie

Shows version information of the gMovie application.

Chapter 3

Setting the “Memory Stick” automatic start function (MS Autorun)

This chapter explains how to set the “Memory Stick” automatic start function on your CLIE handheld. When you want to start an application in the “Memory Stick” media from home screen, refer to the Operating Instructions manual.

What you can do with the MS Autorun application

“Memory Stick” Autorun (hereafter referred to as MS Autorun) is an add-on application which allows your CLIE handheld to copy and start a specified application automatically when “Memory Stick” media is inserted into the CLIE handheld. Removing the “Memory Stick” media automatically deletes the application copy from the memory of the CLIE handheld. MS Autorun functions as virtual memory to effectively utilize the memory of the CLIE handheld.

Starting an application (.prc) on the CLIE handheld automatically

When you use a digital still camera that is compatible with “Memory Stick” media, you can view your images by inserting the “Memory Stick” media into the CLIE handheld. In this example, you would use the auto-run setting to start the PictureGear Pocket application on your CLIE handheld.

Starting an application (.prc) in a “Memory Stick” media automatically

This setting is for automatically starting an application which does not access any data, such as game applications, or an application which accesses data in the CLIE handheld (not in the “Memory Stick” media).

Starting a pre-selected application (.prc) and related database files (.pdb, .prc) in a “Memory Stick” media*

This setting automatically displays a specific image or file with an application such as an image viewer or a document reader. You need to specify an application and the related database files before using this auto-run setting.

Starting an application (.prc) on the CLIE handheld automatically with specific database files (.pdb, .prc) from a “Memory Stick” media*

This setting is used when the application is located on the CLIE handheld and the corresponding database files are located on a “Memory Stick” media. You can also display the desired data automatically by inserting the “Memory Stick” media into your CLIE handheld.

- * If you specify PictureGear Pocket as an auto-run application, tap the arrow ▼ on the top center of the screen in PictureGear Pocket to select “MS.” Likewise, if you specify gMovie player as an auto-run application, tap the movie file you want to play.

Notes


- We do not recommend using MS Autorun with the Address Book, Date Book, To Do List, Memo Pad, Calculator or Mail applications. Problems may occur if the data of these applications do not reside on your CLIE handheld when you perform a HotSync operation.
- The specified application may not start automatically depending on the application in use when you insert the “Memory Stick” media into your CLIE handheld. In this case, return to the home screen, and then insert the Memory Stick media again.

You do not have to install MS Autorun on your CLIE handheld

The MS Autorun application is factory pre-installed.

Setting Auto-run for an Application

To automatically start an application stored in a “Memory Stick” media, perform the following procedure. This example is for when the PictureGear Pocket application is set to start automatically when a “Memory Stick” media containing photos is inserted to the CLIE handheld.

- 1** Install an application you want to start automatically (PictureGear Pocket) on the CLIE handheld.
- 2** Insert the “Memory Stick” media for which you want to set the autorun function into the “Memory Stick” slot.
- 3** On the home screen, rotate the Jog Dial navigator to select MSAutorun and then press the Jog Dial navigator. MS Autorun starts.
Or, tap MSAutorun icon on the home screen.
- 4** Press the Jog Dial navigator.
The application list in your CLIE handheld appears.
- 5** Tap the application (PictureGear Pocket) for which you want to set the auto-run function.
- 6** Tap Set.
The setting is stored in the “Memory Stick” media, and the confirmation dialog box appears.
- 7** Tap OK.
The auto-run setting is completed.
- 8** Tap Home  to return to the home screen.
- 9** Remove the “Memory Stick” media.

To use the auto-run function with this example

When the home screen is displayed and you insert "Memory Stick" media into your CLIE handheld, the PictureGear Pocket application starts automatically.

In this case, if you remove the "Memory Stick" media, the PictureGear Pocket quits automatically and the home screen appears.

For further information, refer to the online manual for MS Autorun.

Note

If "Internal" is displayed at the top center of the PictureGear Pocket screen during operation described above, the image files stored in your CLIE handheld are displayed.

To view image files stored in the "Memory Stick" media, tap the arrow ▼ on the top center of the screen to select "MS."

How to read the online manual

Detailed information on MS Autorun software is provided in the online manual on the supplied CD-ROM.

To see the online manual, the Adobe Acrobat Reader software must be installed on your computer.

- 1** Insert the supplied CD-ROM into your computer's CD-ROM drive.

The install screen appears automatically.

- 2** Click Manuals.

- 3** Double-click MSAutorun Manual.pdf.

The online manual appears.

If the Acrobat Reader software is not installed

- 1** Insert the supplied CD-ROM into your computer's CD-ROM drive.

The install screen appears automatically.

- 2** Click Exit.

- 3** Double-click the My Computer icon on the Windows desktop.

- 4** Right-click the CD-ROM drive icon, and then click Open from the shortcut menu.

- 5** Click the PC folder.

- 6** Double-click the Acrobat folder.

- 7** Double-click ar500enu.exe to install the Acrobat Reader onto your computer.

Chapter 4

Copying the data to the “Memory Stick” media on your CLIE handheld (MS Import/Export)

This chapter explains how to copy the data on your computer to the “Memory Stick” media on your CLIE handheld directly without performing HotSync operation.

What you can do with MS Import/Export application

Both MS Import and MS Export are applications designed to help you copy the data on your computer to the “Memory Stick” media on your CLIE handheld directly without performing a HotSync operation.

When copying the data on your computer

You have to use both the “Memory Stick” (MS) Import application for your CLIE handheld and the “Memory Stick” (MS) Export software for your computer at the same time.

Before using MS Import/Export

You have to install the MS Import application on your CLIE handheld and MS Export on your computer (page 46).

Installing CLIE applications without performing a HotSync operation

Using MS Import/Export, you can install application files (.prc or .pdb) for your CLIE handheld without performing a HotSync operation.

Using your CLIE handheld as a removable disk

Using MS Import/Export, you can use your CLIE handheld as you would a removable disk from the Windows desktop on your computer. You can not only read the data stored in the “Memory Stick” media on your CLIE handheld from your computer, but also write data to the “Memory Stick” media from your computer.

Installing

Before install MS Import application to your CLIE handheld and MS Export software to your computer, perform procedures in the Chapter 2 of Read This First manual on your first setup of your CLIE handheld.

- 1** Insert the installation CD-ROM into the CD-ROM drive of your computer.

The setup program starts automatically.

- 2** Click to select Install CLIE Add-on Software.

- 3** Click to select Install Memory Stick Import/Export.

The installation starts.

Follow the instructions displayed on the screen.

After the installation is completed, the installation screen reappears.

- 4** Click Exit

The installation of MS Export software ends.

- 5** Press the HotSync button on the cradle.

MS Import application is installed on your CLIE handheld during the HotSync operation.

Installing CLIE applications using MS Import/Export

You can install applications for your CLIE handheld into the “Memory Stick” media without performing HotSync operation using MS Import/Export.

- 1** Connect the cradle to a computer in which you have installed MS Export software.
- 2** Insert the “Memory Stick” media into your CLIE handheld.
- 3** Place your CLIE handheld on the cradle.
- 4** On the home screen, rotate the Jog Dial navigator to select MS Import and then press the Jog Dial navigator. MS Import starts.
Or, tap the MSImport icon on the home screen.

- 5** Drag add-on application files (.prc or .pdb) for your CLIE handheld to MS Export shortcut icon on your Windows desktop.

These files are automatically copied to appropriate folders.

If you drag the application file which the MS Export cannot recognize its type

The registration dialog box appears.

In this case, enter the application name and destination folder to which the application will be copied.

- 6** When you finish the operation, tap Disconnect.

Note

Do not remove the “Memory Stick” media while connecting to your computer.

When you use the computer with the Windows 2000/Windows Me

A warning message appears when you tap Disconnect on your CLIE handheld.

Click OK, and then continue operations.

Making sure the contents of the "Memory Stick" media after copying the application

After starting the MS Export again, and then click Memory Stick Drive tab of the MS Export software.

Note

You cannot copy applications by dragging them to the Memory Stick Drive window of the MS Export software.

Using your CLIE handheld as a removable disk

- 1** Connect the cradle to a computer in which you have installed MS Export software.
- 2** Insert the “Memory Stick” media into your CLIE handheld.
- 3** Place your CLIE handheld on the cradle.
- 4** On the home screen, rotate the Jog Dial navigator to select MS Import and then press the Jog Dial navigator. MS Import starts.
Or, tap the MSImport icon on the home screen.
- 5** Operate the desired file or data using your Windows Explorer, and so on.

You can not only copy or delete the data stored in the “Memory Stick” media, but write data in your computer to the “Memory Stick” media.

Note

When you copy the application to the Palm \ Launcher folder of the “Memory Stick” media, some applications on your CLIE handheld may not display the file list of the “Memory Stick” media appropriately.

- 6** When you finish the operation, tap Disconnect.

Note

Do not remove the “Memory Stick” media while connecting to your computer.

When you use the computer with the Windows 2000/Windows Me

A warning message appears when you tap Disconnect on your CLIE handheld.

Click OK, and then continue operations.

How to read the online manual

Detailed information on MS Import/MS Export software is provided in the online manual on the supplied CD-ROM.

To see the online manual, the Adobe Acrobat Reader software must be installed on your computer.

- 1** Insert the supplied CD-ROM into your computer's CD-ROM drive.

The install screen appears automatically.

- 2** Click Manuals.

- 3** Double-click MSImport.pdf.

The online manual appears.

If the Acrobat Reader software is not installed

- 1** Insert the supplied CD-ROM into your computer's CD-ROM drive.

The install screen appears automatically.

- 2** Click Exit.

- 3** Double-click the My Computer icon on the Windows desktop.

- 4** Right-click the CD-ROM drive icon, and then click Open from the shortcut menu.

- 5** Click the PC folder.

- 6** Double-click the Acrobat folder.

- 7** Double-click ar500enu.exe to install the Acrobat Reader onto your computer.

For the latest support information,
check our official Sony CLIE Web site

<http://www.sony.com/clie/>

<http://www.world.sony.com/>