

# *Memory Stick* *Autorun* *Version 1.3*

Operating Instructions

CLiÉ

CLIE, Jog Dial, Memory Stick, the Memory Stick logo, and PictureGear are trademarks of Sony Corporation.

Microsoft and Windows are registered trademarks of Microsoft Corporation in the United States and/or other countries.

Graffiti, HotSync, and Palm OS are registered trademarks, and the HotSync logo and Palm are trademarks of Palm, Inc. or its subsidiaries.

All other trademarks are trademarks of their respective owners.

Before using this software, please read the Software License Agreement that is supplied with the Sony CLIE handheld.

- Copying any or all of the contents of this software, sample images, and Operating Manual, or renting the software are prohibited by copyright laws.
- The Company is not liable for damage or loss resulting from the use of this software, or for any claim from a third party.
- The Company assumes no responsibility aside from the replacement of the media due to manufacturing fault.
- This software must not be used in a system other than that specified.
- The software specifications may be subject to change without notice.

---

# Table of Contents

---

## Before Use

Features .....	4
System Requirements .....	5

---

## Operation

Starting Memory Stick (MS) Autorun .....	6
Setting Auto-run for an Application .....	7
Auto-run for the application in the Memory Stick media .....	8
Auto-run for application or associated data files in the Memory Stick media. ....	10
Changing the Auto-run Settings .....	12
Specify the data file in Memory Stick media to start applications in the CLIE handheld automatically. ....	13
Performing an Auto-run Function .....	15
Viewing the MS Autorun History Log .....	16

---

## Changing Settings

Canceling the Auto-run Function Temporarily .....	17
Deleting the Auto-run Setting .....	18

---

## Supplemental Information

Menu Commands .....	19
Options menu .....	19
Troubleshooting .....	21

# Before Use

---

## Features

Memory Stick Autorun (hereafter referred to as MS Autorun) is an add-on application which allows the Memory Stick media to copy and start a specified application automatically when Memory Stick media is inserted into the CLIE handheld. By removing the Memory Stick media, the application's copy is deleted automatically from the memory of the CLIE handheld. MS Autorun lets a Memory Stick media function as virtual memory to effectively utilize the memory of the CLIE handheld.

The available auto-run settings are :

### **Starting an application in the CLIE handheld automatically (page 7)**

If you set a Memory Stick media for the PictureGear Pocket in the CLIE handheld, then the PictureGear Pocket starts automatically when the set Memory Stick media is inserted. It is also possible to let the Audio Player start automatically when a related MagicGate (MG) Memory Stick media stored with music data is inserted, after setting the Audio Player for the MG Memory Stick.

### **Starting an application in a Memory Stick media automatically (page 8)**

If you set an application in a Memory Stick media to start automatically, then the application starts automatically when the Memory Stick media stored with the application is inserted into the CLIE handheld.

### **Starting an application with related data in a Memory Stick media automatically (page 10)**

If you set a combination with an application and the data in a Memory Stick media to start automatically, then the CLIE handheld loads the application and starts the application with the set data automatically when the Memory Stick media stored with them is inserted.

**Starting a set application in the CLIE handheld automatically when a memory stick media stored with related data is inserted.(page 13)\***

If you set a combination with an application in the CLIE handheld and the data in a Memory Stick media to start automatically, then the application starts automatically when the Memory Stick media stored with the set data is inserted.

\* If you specify the PictureGear Pocket as an auto-run application, tap the arrow ▼ on the top center of the screen in PictureGear Pocket to select "MS." Likewise, if you specify gMovie player as an auto-run application, tap the movie file you want to play.

#### **Note**

- The following applications are not recommended to use with MS Autorun; "Address", "Date Book", "Memo Pad", "To Do List", "Calc" and "Mail". Data files not located on the CLIE handheld may not update properly doing a HotSync operation.
- Some applications may not start automatically when inserting the Memory Stick media into the CLIE handheld. Return to the Home screen and reinsert the Memory Stick media.

---

## **System Requirements**

The following devices and applications are required to use MS Autorun. The MS Autorun application is preinstalled in the CLIE handheld.

### **CLIE handheld**

A CLIE handheld equipped with a Memory Stick slot.

### **Computer**

A computer with Palm Desktop for Sony Software installed, or a computer equipped with a Memory Stick slot.

### **Memory Stick Gate (MS Gate) application**

Used to install an application (.prc) and database files (.pdb) into Memory Stick media.

### **Memory Stick media**

Stores applications (.prc), database files (.pdb), and the auto-run setting.

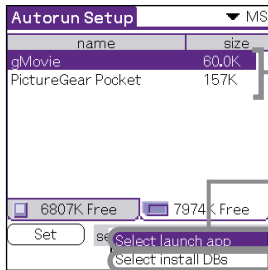
# Operation

## Starting Memory Stick (MS) Autorun

Rotate the Jog Dial navigator to select MS Autorun, and then press the Jog Dial navigator.

Or tap the  icon.

A list of applications stored in the inserted Memory Stick media or in the CLIE handheld is displayed.



List of applications  
(or list of databases)

Applications in the CLIE handheld or in the Memory Stick media are displayed. Select this item to set up an application for auto-run.

Applications and data in the Memory Stick media are displayed. Select this item to set up the data for applications.

### Note

The application data displayed after starting the MS Autorun Version 1.3 is .prc data or .pdb data stored in the folder "\PALM\LAUNCHER". When you copy the data to use this application by using the MS Gate application, be careful to select the location you copy the data to.

---


# Setting Auto-run for an Application

To start an application automatically when inserting the Memory Stick media, set the following procedures. This example describes the setting to automatically start the PictureGear Pocket application when inserting the Memory Stick media containing image files into the CLIE handheld.

- 1 Install the application (PictureGear Pocket).  
To install the application, see the Operating Instructions for the CLIE handheld.

**Note**

The PictureGear Pocket application is preinstalled in some series of the CLIE handheld. For more information, refer to the Operating Instructions of the CLIE handheld.

- 2 Insert the Memory Stick media.
- 3 Rotate the Jog Dial navigator on the Home screen or tap the MSAutorun icon to select the MSAutorun icon, and then press the Jog Dial navigator.  
MSAutorun starts up.
- 4 Press the Jog Dial navigator.  
A list of applications stored in the CLIE handheld is displayed.
- 5 From the list of applications displayed in the CLIE handheld, tap the application PictureGear Pocket for auto-run setting.
- 6 Tap Set.  
The setting is stored in the Memory Stick media.
- 7 Tap OK.  
The auto-run setting for PictureGear Pocket is completed.
- 8 Tap .

## 9 Remove the Memory Stick media.

Try the setting on page 7.

Display the Home screen on the CLIE handheld, and then insert the Memory Stick media to automatically start the PictureGear Pocket application. Remove the Memory Stick media to quit and return to the Home screen (page 15).

### Note

When ▼ Internal is displayed on the PictureGear Pocket screen, the image files in the CLIE handheld are displayed. To set to display the images in the Memory Stick media, tap ▼ MS.

---

# Auto-run for the application in the Memory Stick media

To automatically start the application in the Memory Stick media, set as follows. The example describes how to set gMovie . To prepare the desired movie on gMovie, see Add on application Guide manual.

### Note

The gMovie application is preinstalled in some series of the CLIE handheld. In this case, install another application.

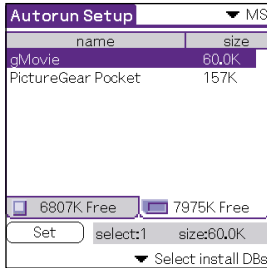
- 1 Install the gMovie application.  
To install the application, see the Operating Instructions manual for the CLIE handheld.
- 2 Insert the Memory Stick media.
- 3 Start MS Gate from the Home screen.
- 4 Tap gMovie from the displayed CLIE handheld side list.
- 5 Tap MOVE.  
The gMovie application and specified database files are moved into the Memory Stick media and deleted from the CLIE handheld memory.  
Make sure you are in the folder \PALM\LAUNCHER.



**6** Return to the Home screen to start MS Autorun.  
The list of applications in the Memory Stick media appears.

**7** Press the Jog Dial navigator.

**8** From the list displayed, tap gMovie.



**9** Tap Set.  
The setting is stored in the Memory Stick media, and then “Autorun setting” appears.

**10** Tap OK.  
The auto-run setting for gMovie is completed. Afterwards, return to the Home screen to remove the Memory Stick media.

---

# Auto-run for application or associated data files in the Memory Stick media

To specify the data file in the Memory Stick media to start the application automatically, set as follows. This example describes the setting for gMovie for movie viewer and its data files.

## Note

- Removing the Memory Stick media does not update the database files in the Memory Stick media. Use caution when the application is required to be updated.
- Though the gMovie data files are displayed in the Memory Stick media, the examples below describe copying.
- The gMovie application is preinstalled in some series of the CLIE handheld. In this case, install another application.

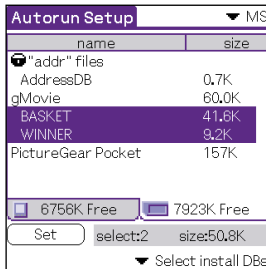
- 1 Install the application (gMovieSonyE.prc) and its movie data files (.pdb) into the CLIE handheld.
- 2 Insert the Memory Stick media for auto-run setting into the Memory Stick Slot.
- 3 From the CLIE handheld Home screen, start MS Gate.
- 4 From the list displayed, tap gMovie and then movie data file.
- 5 Tap MOVE.  
The specified application and database files are copied into the Memory Stick media to be deleted from the CLIE handheld.  
Make sure you are in the folder\PALM\LAUNCHER.
- 6 Return to the Home screen to start MS Autorun.  
The list of applications in the Memory Stick media appears.
- 7 From the list displayed, tap gMovie.

- 8** Tap the Select launch app drop down list and then tap "Select install DBs".

The list of applications and data files appear.

- 9** From the list displayed, tap the gMovie movie data file.

To select multiple data files, tap each item.



- 10** Tap Set.

The setting is stored in the Memory Stick media, and the "Autorun setting" display appears.

- 11** Tap OK.

The auto-run setting for gMedia to display the specified database file is completed.

Afterwards, return to the Home screen, and remove the Memory Stick media.

## Changing the Auto-run Settings

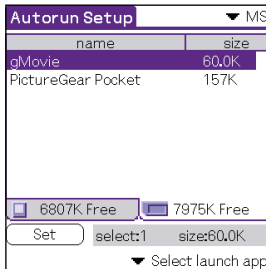
If you need to add new database files to the existing auto-run settings, you can change the auto-run setting later.

The following is an example of adding (or canceling) the auto-run setting for movie files that are set to auto-run with the gMovie application in Memory Stick media.

Similarly, you can change the setting to delete specific data, or to start the application in Memory Stick media by using the CLIE handheld.

- 1 From the Home screen, start MS Autorun.
- 2 Insert the Memory Stick media in the Memory Stick slot.

- 3 Press the Jog Dial navigator.  
The list of applications in the Memory Stick media appears.  
Applications with auto-run settings are highlighted on the screen.



- 4 Tap in the "Select launch app" drop-down list, and then tap "Select Install DBs".  
The list of applications and data files appears.
- 5 To cancel a specified movie file, tap the highlighted file. To add a movie file, tap on the unhighlighted file.
- 6 Tap Set.  
The setting is stored in the Memory Stick media, and the dialog box for confirmation appears.
- 7 Tap OK.  
Changing the auto-run setting is completed.

---

# Specify the data file in Memory Stick media to start applications in the CLIE handheld automatically

To specify the data files in the Memory Stick media to start the application in the CLIE handheld automatically, set as follows. The example describes the setting for gMovie and its sample data files.

## Note

The gMovie application is preinstalled in some series of the CLIE handheld. In this case, install another application.

- 1 Install the gMovie application into the CLIE handheld.
- 2 Insert the Memory Stick media for auto-run setting into the Memory Stick Slot.
- 3 From the Home screen, start MS Gate.
- 4 Tap gMovie from the list displayed.
- 5 Tap MOVE.  
The specified data files are copied into the Memory Stick media to be deleted from the CLIE handheld memory.  
Make sure you are in the folder \PALM\LAUNCHER.
- 6 Return to the Home screen to start MS Autorun.  
The list of applications in the Memory Stick media appears.
- 7 Tap gMovie from the list displayed.
- 8 Tap the Select launch app drop-down list and then tap "Select install DBs".  
The list of applications and database files appear.

- 9** Tap the movie data file of gMedia from the list displayed.  
Tap each item to select multiple database files.
  
- 10** Tap Set.  
The setting is stored in the Memory Stick media, and then the Autorun setting display appears.
  
- 11** Tap OK.  
The setting to start the example in the CLIE handheld automatically displays the specified database files.  
Afterwards, return to the Home screen to remove the Memory Stick media.

---

# Performing an Auto-run Function

- 1 Insert the Memory Stick media set for auto-run into the Memory Stick slot.  
The Now Loading dialog box appears, and the specified application and database files will be copied to the CLIE handheld. After the copying is complete, the application will automatically start.

**Note**

Do not remove the Memory Stick media when the "Now Loading" dialog appears.

- 2 Use the launched application.

- 3 When you finish using the application, remove the Memory Stick media.  
The application closes, and it will return to the Home screen. The application and database files will automatically be deleted from the memory of the CLIE handheld.

**Note**


- The auto-run function does not work if you insert a Memory Stick media into your CLIE handheld during infrared data transfer or the check-in/out operation with Audio Player while MS Gate or MS Autorun is running.
- Data in the Memory Stick media is not updated when the Memory Stick media is removed.
- You cannot delete the data that MS Autorun copies into your CLIE handheld if the Memory Stick media is removed during the check-in/out operation with Audio Player while the PictureGear Pocket application is running.

In this case, go to the Tools menu in MS Autorun and tap Recover. Sony recommends that you go to the Home screen before removing the Memory Stick media.

---

# Viewing the MS Autorun History Log

When the auto-run function is performed by inserting or removing Memory Stick media, a history log is created in the CLIE handheld (MSAutorun\_log). If auto-run fails, it is useful to check the history log for information.

- 1 From the Home screen, start MS Autorun.
- 2 Tap the menu  icon.
- 3 Tap Display log.  
The history log is displayed in the Autorun log dialog box.
- 4 When you have finished checking the history log, tap close.

## **Note**

The stored log is cleared each time Memory Stick media is inserted.





# Changing Settings

---

## Canceling the Auto-run Function Temporarily

When you need to rearrange data stored in several Memory Stick media, you may not want applications to automatically start. You can temporarily cancel the auto-run feature using this procedure.

- 1 From the Home screen, start MS Autorun.
- 2 Tap the menu  icon.
- 3 Tap Preferences.  
The Preferences dialog box appears.
- 4 Tap the Disable checkbox in Autorun to select it.
- 5 Tap OK.  
The auto-run function is temporarily canceled.


 **To enable the auto-run function**

Perform steps 1-3, listed above. Tap to clear the check mark in the Disable check box.

---

# Deleting the Auto-run Setting

When you delete the auto-run setting, you cancel the auto-run function on the Memory Stick media.

- 1 From the Home screen, start MS Autorun.
- 2 Insert the Memory Stick media into the Memory Stick slot.
- 3 Tap the menu  icon.
- 4 Tap Tools.  
The Tools dialog box appears.
- 5 Tap Delete autorun setting.  
The Delete setting dialog box appears.
- 6 Tap OK.  
The auto-run setting is deleted.
- 7 Tap close.


## Where to store the auto-run setting

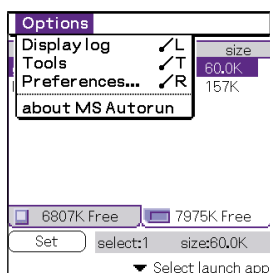
The auto-run setting of MS Autorun is stored in the file named “\PALM\DEFAULT.ARN” in the Memory Stick media. You can delete auto-run settings by deleting this file using your computer.

# Supplemental Information

## Menu Commands

### Options menu

The Options menu is displayed by tapping the menu  icon when MS Autorun is running.



#### Display log

When Memory Stick media is inserted into or removed from your CLIE handheld, a history log is created. From the Options menu, you can view this information by tapping Display log.

#### Tools

The following buttons appear in the Tools dialog box:

##### Recover:

This button is displayed when the auto-run function is performed and MS Autorun is started without removing the Memory Stick media. You can delete the application and database files copied into your CLIE handheld.

##### Delete autorun setting:

This button is displayed when the auto-run setting file is stored in the inserted Memory Stick media. You can delete the auto-run setting in the Memory Stick media.

## **Preferences**

Displays the Preferences dialog box.

The following items appear on this dialog box:

Autorun:  Disable:

You can temporarily cancel the auto-run function.

MS List::

You can switch the format of the list of data in Memory Stick media.

### **about MS Autorun**

The version information of the MS Autorun application is displayed.

# Troubleshooting

This section describes how to solve common problems you may encounter when using your CLIE handheld. Many problems have simple solutions, so try these suggestions before you call Sony Customer Information Services Center at 1-877-760-SONY (1-877-760- 7669).

Symptom	Cause/Remedy
<p>The application I specified does not start automatically, even when I have inserted the Memory Stick media.</p>	<p><b>MS Gate or MS Autorun is running.</b>            → When these applications are running, the auto-run function does not work.            If MS Gate or MS Autorun is not running, check the history log for possible problems.</p> <p><b>There is very little free memory available</b>            → When there is very little free memory available (approximately less than 6 KB), Memory Stick Autorun will not display the history log in order to prevent a system crash. Check the free memory from the Home screen, by tapping the Menu icon, App, and then Info.</p> <p><b>The auto-run setting file is invalid.</b>            → The auto-run setting file was made in a different version of MS Autorun or has become corrupted. Recreate the setting using MS Autorun.</p> <p><b>The specified application or database file is not stored in the Memory Stick media.</b>            → Copy the required application and database files to the Memory Stick media.</p> <p><b>There is not enough free memory on your CLIE handheld.</b>            → The free memory required to run the auto-run function must be 1.1 times the size of the application.</p> <p><b>The Memory Stick media is not working properly.</b>            → Your Memory Stick media may be damaged and should be discarded. Always use undamaged Memory Stick media.</p> <p><b>An application that automatically changes the image, such as a game or an image viewer, is running.</b>            → After opening the Home screen, reinsert the Memory Stick media.</p>

Symptom	Cause/Remedy
	<p>Stop using the buttons, tap, or Jog Dial navigator, then reinsert the Memory Stick media.</p> <p><b>The application is specified in the "Select install DBs" mode.</b></p> <p>→ When the application is specified in the "Select install DBs" mode, the application will automatically be installed, but will not be started. Be sure to specify if you want the application to start automatically in the "Select launch app" mode.</p>
<p>The application or database files are not deleted even when I remove the Memory Stick media.</p>	<p><b>In the following cases, the system may not detect the insertion and removal of Memory Stick media:</b></p> <ul style="list-style-type: none"> <li>• When an application that automatically changes the image, such as a game or an image viewer, is running.</li> <li>• When performing key operations or tapping frequently</li> </ul> <p>In this case, deletion of data is not performed even if the Memory Stick media is removed. To delete the data, tap Tools of the Option menu, and then tap Recover.</p>
<p>I want to turn off the sound.</p>	<p>Sound volume can be modified by changing preferences in the System Sound drop-down list. To mute sound, change the setting to Off.</p>
<p>When I remove the Memory Stick media, the application is deleted but the database files remain on my CLIE handheld.</p>	<p>If data has changed after an application starts, you may not be able to delete the file, even if you remove the Memory Stick media.</p> <p>If this occurs, open the Home screen, then remove the Memory Stick media.</p>
<p>I do not hear an event sound when I perform various auto-run operations, but I do hear it when I insert or remove Memory Stick media.</p>	<p><b>MS Autorun will make an event sound after the various auto-run operations have been successfully performed. The successful event sound only occurs when removing the Memory Stick media. You will not hear the successful event sound in the following cases:</b></p> <ul style="list-style-type: none"> <li>• Just after setting auto-run for the first time</li> <li>• When auto-run is not performed because MS Autorun or MS Gate is running when inserting the Memory Stick media</li> </ul>

Symptom	Cause/Remedy
<p>When I format the Memory Stick media with an auto-run setting through the MS Gate application, the display automatically returns to the Home screen display.</p>	<p><b>MS Autorun deletes the data copied by the auto-run function when removing the Memory Stick media. You may see this happening when you perform the following procedure:</b></p> <ol style="list-style-type: none"> <li>1 Insert the Memory Stick media to start an application automatically.</li> <li>2 Start MS Gate without removing the Memory Stick media.</li> <li>3 Format the Memory Stick media.</li> </ol> <p>When your unit registers that the Memory Stick media is removed and that formatting is completed, the Home screen is displayed and the auto-run data is deleted from your CLIE handheld.</p>
<p>When tapping Tools under the Options menu, the buttons are not displayed in the Tools dialog box.</p>	<p>The Recover and Delete autorun setting buttons are displayed in the Tools dialog box only if these functions are available.</p> <p>Recover: displays when the auto-run is performed and MS Autorun is started without removing the Memory Stick media.</p> <p>Delete autorun setting: displays when an auto-run setting file is stored in the inserted Memory Stick media.</p>
<p>An error message appears notifying the user that the CLIE internal memory is getting low.</p>	<p>To run MS Autorun, more than 50KB free memory is required.</p> <p>To automatically start an application with MS Autorun, free space in the amount equal to the data size of the application to be installed is required. Be sure to reserve enough free memory.</p>

