

SONY®

Memory Stick Gate *Version 2.0*

Operating Instructions

CLiÉ

CLIE, Memory Stick and the Memory Stick logo are trademarks of Sony Corporation.

Microsoft and Windows are registered trademarks of Microsoft Corporation in the United States and/or other countries.

HotSync is a registered trademark, and PalmDesktop and the HotSync logo are trademarks of Palm, Inc. or its subsidiaries.

All other trademarks are trademarks of their respective owners.

- Copying any or all of the contents of this software, sample images, and Operating Manual, or renting the software are prohibited by copyright laws.
- The Company is not liable for damage or loss resulting from the use of this software, or for any claim from a third party.
- The Company assumes no responsibility aside from the replacement of the media due to manufacturing fault.
- This software must not be used in a system other than that specified.
- The software specifications may be subject to change without notice.

Table of Contents

Before Use

What you can do with MS Gate	4
------------------------------------	---

Operation

Starting MS Gate Ver. 2.0	5
Preparing a Memory Stick media – To create a default folder	7
Copying data in the CLIE handheld to the Memory Stick media	8
Copying data from the Memory Stick media to the CLIE handheld	10
Deleting data in the Memory Stick media	12
MS Gate Ver.2.0 menu commands	14
Tools menus	14
Options menus	15

Before Use

What you can do with MS Gate

MS Gate enables you to copy, move and delete data files between the Memory Stick media inserted into the CLIE handheld and the CLIE handheld itself.

MS Gate Ver.2.0 has the following newly added functions.

- Creating and deleting folders.
- Sorting files stored in the Memory Stick media and CLIE handheld.
- Displaying the file names in the Memory Stick media.
- The newly added [Media Information] dialog box displays the memory information and you can add volume label.
- Supports high quality 320 × 320 mode display.

Operation

Starting MS Gate Ver. 2.0

You can copy, move, and delete data files stored in the Memory Stick media and CLIE handheld using the MS Gate application.

Rotate the Jog Dial to select [MS Gate] on the Home screen of the CLIE handheld, then press the Jog Dial.

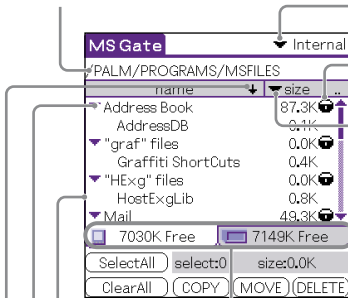
The MS Gate application starts up and the data list of the CLIE handheld appears.

You can also start MS Gate by tapping the [MS Gate] icon.

The screen to display data in the CLIE handheld

Displays the Path of current folder in "Memory Stick" media.

Tap this icon to switch the view between your CLIE handheld and "Memory Stick" media.



Lock icon

Tap here to switch the view.
• type : File type
• size : File size
• creator: Creator ID of the file
• version: Version of the file
• none : No items displayed

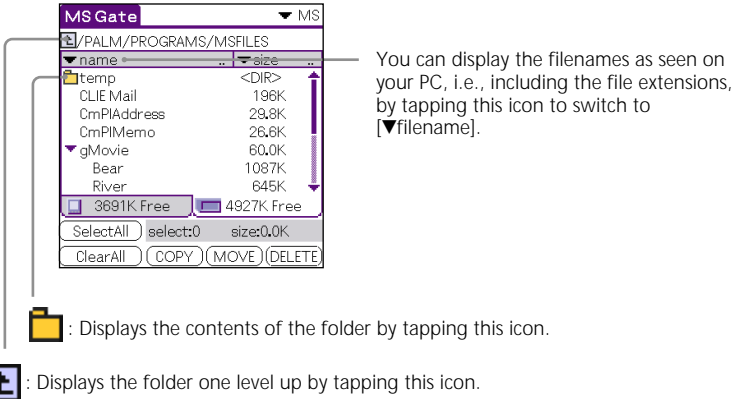
Displays the files which belong to the same creator (ID) as one grouped item.

Tap this icon to switch the view between your CLIE handheld and "Memory Stick" media.

Tap this icon to display or hide the contents.

Tap this icon to sort in ascending order or in descending order.

The screen to display data in the Memory Stick media



The above two icons are only displayed when data in the Memory Stick media is displayed on the screen. The other icons are the same as the icons displayed in “The screen to display data in the CLIE handheld” on the previous page.

You can also select folders from a pop up list after pressing Jog Dial.

Note on copying and deleting the data by MS Gate

If you move or delete some part of the data file, the applications on the CLIE handheld may stop operating or the data might be cleared. When you delete part of the data file, the operation of the applications and the data contents on the CLIE handheld are not guaranteed.

Especially, do not move or delete the following data files from the CLIE handheld.

- **Saved Preference:** Latest operating circumstances and settings of various applications are saved.
- **Unsaved Preference:** The settings of various applications and user information of the CLIE handheld are saved. If you delete this file, HotSync operation may not work correctly.
- **NetworkDB:** Networking settings. If you delete this file, you will not be able to access the Internet.
- **AddressDB:** Address Database files*
- **DatebookDB:** Datebook Database files*
- **MemoDB:** Memo Database files*
- **ExpenseDB:** Expense Database files*

- **MailDB:** Mail Database files*
- **ToDoDB:** ToDo Database files*

* These database files can be copied and backed up on a Memory Stick. Note however, if the backup data is moved back to the CLIE handheld, the data stored in the CLIE handheld is replaced by the backup data, and any data added or revised on the CLIE handheld since the data backup will be erased.

Preparing a Memory Stick media

– To create a default folder

Before using the following "Memory Stick" media, it is necessary to create a basic folder (default folder) in the Memory Stick media.

- The Memory Stick media that you are going to use with MS Gate Ver.2.0 for the first time.
- The Memory Stick media that you have just formatted.

A default folder is a basic folder used to write or read data using MS Gate Ver.2.0. A folder named \PALM\PROGRAMS\MSFILES is created in the Memory Stick media.

- 1** Insert a Memory Stick media into the Memory Stick slot of the CLIE handheld.
- 2** Start MS Gate from the Home screen of the CLIE handheld.
- 3** Select [Create Default Folder] from [Menu].

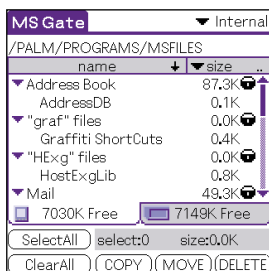
Copying data in the CLIE handheld to the Memory Stick media

Not only can you save data onto your computer using HotSync, but you can also save data inside the CLIE handheld to a Memory Stick media using MS Gate.

Notes


- A Memory Stick media cannot be used if the remaining battery power is low because duplicating data consumes battery power. In this case, connect the AC adapter.
- If the CLIE handheld receives infrared communication while copying or moving data, the data copying or moving is stopped. Do not use infrared communication while copying or moving data.

- 1 Insert a Memory Stick media into the CLIE handheld.
- 2 Rotate the Jog Dial to select MS Gate on the Home screen, then press the Jog Dial.
MS Gate starts, and a list of data in the CLIE handheld is displayed.
You can also start MS Gate by tapping the [MS Gate] icon.



- 3 Select the data you want to copy to the Memory Stick media by tapping each file.
You can tap and select multiple files.

Note

You cannot copy data marked with  (copy-protected mark).

4 Tap [COPY].
The [Copy File] dialog box appears.

5 Tap [OK].
The data selected in step 3 is copied to the Memory Stick media (stored in the \PALM\PROGRAMS\MSFILES folder)



To copy all data at once

Tap [Select All] in step 4 above.

To cancel the selected data

- Tap [Clear All] to cancel all selections.
- Tap the selected data again to cancel the selected data.

To change the folder to be copied

Tap  or  to select the folder that you want to copy, so that the folder display changes and you can specify a folder to be copied.

You can only select a folder under the [PALM\PROGRAMS] folder. The other folders cannot be selected.

Moving data from the CLIE handheld to a Memory Stick media

If there is not much free memory space on the CLIE handheld, it is convenient to move the data, instead of copying, to the Memory Stick media.

In step 4 above, tap [MOVE].

The data on the CLIE handheld is deleted after being saved on the Memory Stick media.

Note

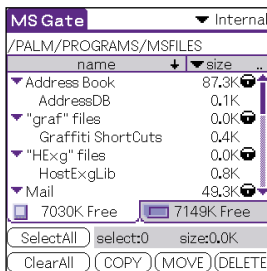
If the [Low Batteries] dialog box appears while copying or moving data, data copying or moving might fail resulting in a faulty file being recorded to the Memory Stick.

After recharging the battery, repeat the same procedure again. When the dialog box confirming the replacement appears, tap [Yes] or [Yes to all].

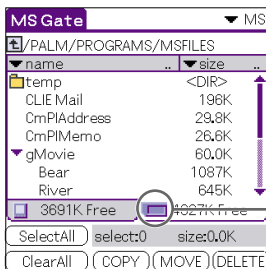
Copying data from the Memory Stick media to the CLIE handheld


You can also copy data saved on a Memory Stick media to the CLIE handheld by using MS Gate. Make sure your CLIE handheld has enough memory space before copying.

- 1 Insert a Memory Stick media into the CLIE handheld.
- 2 Rotate the Jog Dial to select MS Gate on the Home screen, then press the Jog Dial.
MS Gate starts, and a list of data in the CLIE handheld is displayed.
You can also start MS Gate by tapping the [MS Gate] icon.



- 3 Press the Jog Dial.
Or tap ▼ at the upper right corner of the screen to select [MS]



You can also select [MS] by tapping the tab which has  displayed.

The data list of the Memory Stick media (stored in the \PALM\PROGRAMS\MSFILES folder) is displayed.

4 Tap to select the data you want to copy to the CLIE handheld.

5 Tap [COPY].

The [Copy File] dialog box appears.

6 Tap [OK].

The data selected in step 4 in the Memory Stick media is copied to the CLIE handheld.



To copy all the data at once

Tap [Select All] in step 4 above.

To cancel the selected data

- Tap [Clear All] to cancel all selections.
- Tap the selected data again to cancel the selected data.

To change the folder to be copied

Tap  or  to select the folder that you want to copy, so that the folder display changes and you can specify a folder to be copied.

Moving the data in the Memory Stick media to the CLIE handheld

You can also move the data, instead of copying, from the Memory Stick media to the CLIE handheld.

Tap [MOVE] in step 5 above.

The data in the Memory Stick media is deleted after being saved on the CLIE handheld.

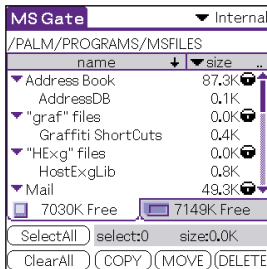
Note

Some of the files copied from the Memory Stick media to the CLIE handheld might not be backed up on your computer by the HotSync operation.

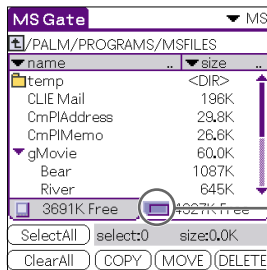
Deleting data in the Memory Stick media


You can delete unnecessary data saved on the Memory Stick media by using MS Gate.

- 1 Insert the Memory Stick media into the CLIE handheld.
- 2 Rotate the Jog Dial to select MS Gate on the Home screen, then press the Jog Dial.
MS Gate starts, and a list of data in the CLIE handheld is displayed.
You can also start MS Gate by tapping the [MS Gate] icon.



- 3 Press the Jog Dial.
Or tap ▼ at the upper right corner of the screen to select [MS].



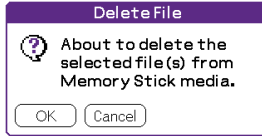
You can also select [MS] by tapping the tab which has  displayed.

The data list of the Memory Stick media (stored in the \PALM\PROGRAMS\MSFILES folder) is displayed.

4 Select the data you want to delete by tapping the file.

5 Tap [DELETE].

The [Delete File] dialog box appears.



6 Tap [OK].

The data in the Memory Stick media you selected in step 4 is deleted.

To delete all data at once

Tap [SelectAll] in step 4 above.

To cancel the selected data

- Tap [Clear All] to cancel all selections.
- Tap the selected data again to cancel the selected data.

MS Gate Ver.2.0 menu commands

MS Gate uses unique menu commands.

Tools menus

The contents of the Tools Menu depend on the displayed screen.

Select All

Selects all data displayed in the tab you select.

Clear All

Cancels the selected data.

COPY

Copies selected data to the CLIE handheld or Memory Stick media. The [Copy File] dialog box appears. Tap [OK].

MOVE

Moves selected data to the CLIE handheld or Memory Stick media. The [Move File] dialog box appears. Tap [OK].

DELETE

Deletes selected data from the CLIE handheld or Memory Stick media. The [Delete file] dialog box appears. Tap [OK].

Rename

Changes the file or folder names in the Memory Stick media.

Create Folder

Adds a new folder to the current folder (selected folder) in the Memory Stick media.

Create Default Folder

Creates a \PALM\PROGRAMS\MSFILES folder.

Change to Default Folder

Returns to the \PALM\PROGRAMS\MSFILES working folder.

* The default folder is a basic working folder of MS Gate.

Options menus

Format

Formats (initializes) the Memory Stick media inserted in the CLIE handheld. For more information, refer to the Operating Instructions of the CLIE handheld.

Media Information

Shows the information in the Memory Stick media.

About MS Gate

Shows the version information of MS Gate.

