

# Read This First

Personal Entertainment Organizer

CLiÉ

PEG-NR70V/U  
PEG-NR70/U

---

## Chapter 1

What is the Sony  
CLiÉ Handheld?

---

## Chapter 2

Setting up your Sony  
CLiÉ Handheld  
– Basics

---

## Chapter 3

Setting up your Sony  
CLiÉ Handheld  
– Advanced

## WARNING

**To prevent fire or shock hazard, do not expose the unit to rain or moisture. To avoid electrical shock, do not open the cabinet. Refer servicing to qualified personnel only.**

### For customers in the U.S.A and Canada

#### Owner's Record

The model number and serial number are located on the back of the product. Record the model number and the serial number in the space provided below. Refer to them whenever you call upon your Sony dealer regarding this product.

Model No. \_\_\_\_\_  
Serial No. \_\_\_\_\_

The socket-outlet shall be installed near the equipment and shall be easily accessible.

#### CAUTION

You are cautioned that any changes or modifications not expressly approved in this manual could void your authority to operate this equipment.

This Class B digital apparatus complies with Canadian ICES-003.

Cet appareil numérique de la classe B est conforme à la norme NMB-003 du Canada.

#### NOTE

This equipment has been tested and found to comply with the limits for a Class B digital device, pursuant to Part 15 of the FCC Rules. These limits are designed to provide reasonable protection against harmful interference in a residential installation. This equipment generates, uses, and can radiate radio frequency energy and, if not installed and used in accordance with the instructions, may cause harmful interference to radio communications.

However, there is no guarantee that interference will not occur in a particular installation. If this equipment does cause harmful interference to radio or television reception, which can be determined by rotating the equipment off and on, the user is encouraged to try to correct the interference using one or more of the following measures:

- Reorient or relocate the receiving antenna.
- Increase the separation between the equipment and receiver.
- Connect the equipment into an outlet on a circuit different from that to which the receiver is connected.
- Consult the dealer or an experienced radio/TV technician for help.

If you have a question about this product, call the Sony Customer Information Center at keep on next line 1-877-760-7669; or write to the Sony Customer Information Center at 12451 Gateway Boulevard, Fort Myers, FL 33913. The number below is for FCC-related matters only.

#### Declaration of Conformity

Trade Name: SONY

Model No.: PEG-NR70V/U  
PEG-NR70/U

Responsible Party: Sony Electronics Inc.

Address: 680 Kinderkamack Road,  
Oradell, NJ 07649 USA

Telephone No.: 201-930-6972

This device complies with part 15 of the FCC Rules.

Operation is subject to the following two conditions:

- (1) This device may not cause harmful interference, and
- (2) This device must accept any interference received, including interference that may cause undesired operation.

The supplied interface cable must be used with the equipment in order to comply with the limits for a digital device pursuant to Subpart B of Part 15 of FCC Rules.

## RECYCLING LITHIUM-ION BATTERIES

Lithium-Ion batteries are recyclable.

You can help preserve our environment by returning your used rechargeable batteries to the collection and recycling location nearest you.

For more information regarding recycling of rechargeable batteries, call toll free 1-800-822-8837, or visit <http://www.rbrc.org/>

Caution: Do not handle damaged or leaking lithium-ion batteries.



## On the supplied software

- Copyright laws prohibit reproducing the software or the software manual in whole or in part or renting the software without the permission of the copyright holder.
- In no event will SONY be liable for any financial damage or loss of profits, including claims made by third parties, arising out of the use of the software supplied with this player.
- In the event a problem occurs with this software as a result of defective manufacturing, SONY will replace it at SONY's option or issue a refund. However, SONY bears no other responsibility.
- The software provided with this product cannot be used with equipment other than that which it is designated for use with.
- Please note that, due to continued efforts to improve quality, the software specifications may be changed without notice.
- The software library incorporated in CLIÉ™ handheld is based in part on the work of the Independent JPEG Group.

Program © 2002 Sony Corporation, © 2002 Palm, Inc., or its subsidiaries. All rights reserved.

Documentation © 2002 Sony Corporation

## CAUTION

Please contact your nearest Sony dealer regarding any problems you are experiencing with your Sony product.

## Notes

- Sony does not support third-party add-on applications. If you are having a problem with a third-party application, please contact the developer or publisher of that software.
- The illustrations in this manual may differ from the actual software.
- Explanations in this manual assume that you are familiar with basic operations of Windows®. For how to use your computer and operating system, please refer to their respective manuals.

Before using your CLIÉ handheld, be sure to read the accompanying End-User's License Agreement.

Sony, Memory Stick, the Memory Stick logo, Jog Dial, OpenMG, and PictureGear are trademarks of Sony Corporation.

Graffiti, HotSync, and Palm OS are registered trademarks, and the HotSync logo and Palm are trademarks of Palm, Inc. or its subsidiaries.

IBM and PC/AT are registered trademarks of International Business Machines Corporation.

Microsoft, Windows, Windows NT, Outlook, DirectX, and the Windows 98 logo are registered trademarks of Microsoft Corporation.

MMX and Pentium are registered trademarks of Intel Corporation.

Pumatech, the Pumatech logo, Intellisync and Intellisync Lite are trademarks of Pumatech, Inc., that may be registered in some jurisdictions.

Adobe and Adobe Acrobat Reader are trademarks of Adobe Systems Incorporated.

PrimoSDK for CD Partial software replication technology by VERITAS Software Corporation.

QuickTime and the QuickTime logo are trademarks used under license. QuickTime is registered in the U.S. and other countries.

This product includes fonts owned by TypeBank Co., Ltd. under license.

All other trademarks are trademarks of their respective owners.

Sample movies and music: cocoro~.prc (from DVD Hawaiian Breeze - KOHALA Collection (CCBN-27013))

Music: Mango Cooler (Composed by Charles Michael Brotman. Performed by KOHALA)

Copyright © 2001 cocoronetworks, inc. Copyright © 1998, 2001 Palm Records, Inc. All rights reserved.

<http://www.cocoronet.com/en/>

# Table of Contents

About the manuals .....	5
Which manual to read? .....	7

## Chapter 1

What is the Sony CLIÉ Handheld?	
What can you do with your Sony CLIÉ Handheld? .....	10
System requirements .....	12
Sony CLIÉ Handheld components ..	13
Locating the display and keyboard panel controls .....	13
Locating back panel components ....	15
Changing the operating style .....	17
Locating cradle components .....	18
Elements of the CLIÉ interface .....	19

### What is on the CLIÉ Installation

CD-ROM? .....	22
CD-ROM contents .....	22
How to read the PDF manuals on the CD-ROM .....	23

## Chapter 2

### Setting up your Sony CLIÉ Handheld – Basics

Step 1: Charging your Sony CLIÉ Handheld .....	26
Step 2: Turning on your Sony CLIÉ Handheld for the first time .....	27
Opening the display panel .....	27
Making the initial setting .....	28
Step 3: Entering data into your Sony CLIÉ Handheld .....	32
Step 4: Installing the Palm™ Desktop for CLIÉ software on your computer .....	35

Step 5: Connecting your Sony CLIÉ Handheld and your computer via the cradle .....	39
---	----

Step 6: Performing a HotSync® operation for the first time .....	40
--	----

## Chapter 3

### Setting up your Sony CLIÉ Handheld – Advanced

Checking the bundled applications on your Sony CLIÉ Handheld .....	44
Overview of basic Palm OS® applications .....	45
Overview of Sony applications .....	48

Installing the supplied applications on your computer .....	53
Installing SonicStage™ LE .....	53
Installing PictureGear™ 4.5Lite .....	54
Installing QuickTime® 5 .....	54
Installing Memory Stick Export .....	55
Installing Sound Converter .....	55
Installing other third-party applications .....	56
Installing Acrobat Reader® 5.0 .....	56
Uninstalling the supplied applications .....	57

Installing add-on applications on your Sony CLIÉ Handheld or Memory Stick media .....	58
Installing add-on applications from the Palm™ Desktop for CLIÉ software ....	59
Installing add-on applications by beaming them from another Palm OS® device .....	62
Installing add-on applications directly from the Installation CD-ROM menu .....	64
Removing add-on applications .....	65

Customer registration .....	66
-----------------------------	----

---

# About the manuals

Welcome to the Sony Personal Entertainment Organizer (referred to as the “CLIÉ handheld” or “Sony CLIÉ Handheld” in this manual).

Your CLIÉ handheld comes with three manuals:

- Read This First (this guide)
- Operating Instructions (as a PDF file on the CD-ROM)
- Add-on Application Guide

Before using your CLIÉ handheld, read this guide for an overview of features, setup and installation instructions, and other important details.

After you set up your CLIÉ handheld and become familiar with its basic functions, you can use the other two manuals (Operating Instructions and Add-on Application Guide) as references for detailed features, less common tasks, and maintenance of your CLIÉ handheld. These manuals can also serve as a source of information if you have problems operating your CLIÉ handheld.

The contents of the three manuals are as follows.

## Read This First (this guide)

This guide is designed to help you quickly get your CLIÉ handheld up and running.

This guide shows you how to:

- Identify all the parts of your CLIÉ handheld
- Set up your CLIÉ handheld
- Install supplied applications on your CLIÉ handheld and your computer
- View and enter data

Continued on next page

---

## About the manuals

### Operating Instructions

The Operating Instructions manual is available on the supplied CD-ROM as a PDF file; you can view or print the file as necessary.

The manual describes how to use your CLIÉ handheld and the Personal Information Management (PIM) applications that come with your CLIÉ handheld.

Additionally, the manual shows you how to:

- View and enter data in greater detail
- Use your CLIÉ handheld with your computer
- Use Personal Information Management applications (Date Book, Address Book, To Do List, Memo Pad, and Calculator)
- Personalize your CLIÉ handheld with your own preference settings
- Back up the data on your CLIÉ handheld
- Maintain your CLIÉ handheld

### Add-on Application Guide

The Add-on Application Guide describes how to install and use the supplied add-on applications, including:

- Audio Player and SonicStage LE
- CLIÉ Camera (PEG-NR70V/U only)
- PictureGear™ Pocket, PhotoStand, and PictureGear 4.5Lite
- CLIÉ Paint
- gMovie™
- CLIÉ Mail
- World Alarm Clock
- CLIÉ Remote Commander
- Sound Utility and Sound Converter
- Memory Stick Autorun (MS Autorun)
- Memory Stick Import (MS Import) and Memory Stick Export (MS Export)

The three manuals all describe operations of two models of the CLIÉ handheld (PEG-NR70V/U and PEG-NR70/U). All illustrations of the unit are of PEG-NR70V/U, unless specified otherwise. Differences between the two models are described in their relative sections.

# Which manual to read?

After you set up your CLIE handheld and become familiar with its basic functions, you can refer to the rest of the manuals as follows:

<b>When you want to:</b>		<b>Read:</b>
Manage your personal information using your CLIE applications.	→	<b>Operating Instructions Chapter 2</b> Using basic applications
Synchronize data between your CLIE handheld and your computer.	→	<b>Operating Instructions Chapter 3</b> Exchanging and updating data using a HotSync® operation
Exchange and share information with other handheld users.	→	<b>Operating Instructions Chapter 4</b> Communicating using your Sony CLIE Handheld
Enjoy music on your CLIE handheld.	→	<b>Add-on Application Guide Chapter 1</b> Playing audio files (Audio Player)
Take pictures with your CLIE handheld. (PEG-NR70V/U only)	→	<b>Add-on Application Guide Chapter 2</b> Recording still images (CLIE Camera)
View images on your CLIE handheld.	→	<b>Add-on Application Guide Chapter 3</b> Viewing image files (PictureGear Pocket)
Draw on image files on your CLIE handheld.	→	<b>Add-on Application Guide Chapter 4</b> Drawing on image files (CLIE Paint)
Watch movies on your CLIE handheld.	→	<b>Add-on Application Guide Chapter 5</b> Playing a movie (gMovie player)

Continued on next page

## Which manual to read?

---

Exchange e-mail using your CLIÉ handheld.	→	<b>Add-on Application Guide Chapter 6</b> Exchanging e-mail (CLIÉ Mail)
View the World Alarm Clock on your CLIÉ handheld.	→	<b>Add-on Application Guide Chapter 7</b> Viewing the World Alarm Clock (World Alarm Clock)
Use your CLIÉ handheld as a remote control for TV, VCR, or DVD player.	→	<b>Add-on Application Guide Chapter 8</b> Using your CLIÉ handheld as a remote control (CLIÉ Remote Commander)
Import your favorite sound files from your computer to your CLIÉ handheld.	→	<b>Add-on Application Guide Chapter 9</b> Importing your favorite sound files (Sound Utility/Sound Converter)
Set your favorite application to start automatically whenever you insert a Memory Stick media.	→	<b>Add-on Application Guide Chapter 10</b> Setting the Memory Stick automatic start function (Memory Stick Autorun)
Transfer data between your CLIÉ handheld and your computer using a Memory Stick media.	→	<b>Add-on Application Guide Chapter 11</b> Copying data to the Memory Stick media in your CLIÉ handheld (Memory Stick Import/Export)

---



---

# Chapter 1

---

## *What is the Sony CLIÉ Handheld?*

This chapter describes the features of your CLIÉ handheld, its system requirements, its buttons and controls, and the contents of the Installation CD-ROM.

---

### **Contents**

What can you do with your Sony CLIÉ Handheld? .....	10
System requirements .....	12
Sony CLIÉ Handheld components .....	13
Locating the display and keyboard panel controls .....	13
Locating back panel components .....	15
Changing the operating style .....	17
Locating cradle components .....	18
Elements of the CLIÉ interface .....	19
What is on the CLIÉ Installation CD-ROM? .....	22
CD-ROM contents .....	22
How to read the PDF manuals on the CD-ROM .....	23

# What can you do with your Sony CLIÉ Handheld?

Once you familiarize yourself with the basic workings of your CLIÉ handheld, you'll easily be able to:

- Enter all your schedule details in the Date Book and view them by the day, week, or month, and even set an alarm to remind you of an important event.
- Keep all your contact names, addresses, phone numbers, and other details in the Address Book. In addition, you can paste an image to an address record using the supplied PictureGear™ Pocket application.
- Add your tasks to the To Do List, prioritize them, and assign them a due date.
- Synchronize your data with the Palm™ Desktop for CLIÉ software on your computer so you always have a backup copy of your important information.
- Customize your CLIÉ handheld and set different levels of security to prevent unauthorized users from viewing your data.
- Exchange data with your computer, other Sony CLIÉ handhelds, digital cameras, and other portable devices with Sony's Memory Stick™ media.

Beyond the basic features, your CLIÉ handheld offers many entertaining and unique conveniences. For example, you can:

- Take music (MP3 or ATRAC3 audio files) wherever you go, playing them back with the Audio Player application.
- Use your CLIÉ handheld as a digital still camera, recording still images with the CLIÉ Camera application (PEG-NR70V/U only). The recorded images can be edited with the CLIÉ Paint application, and managed with the PictureGear Pocket application. You can view the images on your computer using the PictureGear® Lite software (if you convert the images to DCF format with the PictureGear Pocket or the CLIÉ Paint application, you can use other browsers to view them as well).

- Create a slideshow of images, including transition effects, using the PhotoStand feature of the PictureGear Pocket application.
- Make original drawings or edit image files with the CLIE Paint application.
- Watch a movie with the gMovie™ application.
- Write, send, and receive e-mail with the CLIE Mail application. You can also attach and send image files managed with the PictureGear Pocket application and receive those sent to you. Received images in PGP or DCF format can be viewed on your CLIE handheld with the PictureGear Pocket application.

**Note**

If your CLIE handheld is not connected to a network, you cannot directly send or receive e-mails with it, but must perform a HotSync operation with a computer connected to the network.

- Keep track of time around the world with the World Alarm Clock application, which also works as an alarm clock.
- Replace the remote controls of your TV, VCR, DVD player, or other device with your CLIE handheld using the CLIE Remote Commander application.
- Use other add-on applications for the Palm OS®.
- Enjoy Web Clipping\*.

\* Web Clipping is a system provided by Palm, Inc. and its subsidiaries for Palm OS handhelds, which enables easy access to information provided on the Web. If you install various Web Clipping applications on your CLIE handheld, you can retrieve specific information such as news, weather, or restaurant guides and display them on your CLIE handheld. Web clipping applications require Internet connections. For details on its use, or for answers to your questions, refer to the following Web site:  
<http://www.palm.com/wireless/>

# System requirements

To install and operate the Palm™ Desktop software on your computer, your computer system must meet the following requirements:

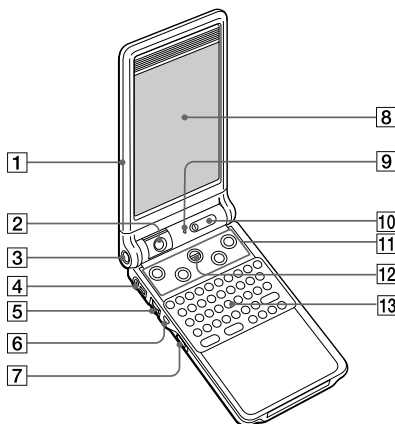
- OS:
  - Microsoft® Windows® 98 Second Edition
  - Windows® Millennium Edition
  - Windows® 2000 Professional
  - Windows® XP Home Edition
  - Windows® XP Professional
- CPU: MMX Pentium® 233 MHz or faster  
(Pentium III 450MHz or faster recommended)
- RAM: 64MB or more  
(128MB or more recommended for Windows® XP)
- Hard disk drive: 150MB or more available space  
(350MB or more recommended)
- Display: High Color or better (800 × 600 pixels or more)
- CD-ROM drive
- Mouse or similar pointing device
- One available USB connector

## Notes

- To install the Palm Desktop for CLIÉ software on Windows® 2000 Professional or Windows® XP, log on as “Administrator.”
- Macintosh computers are not compatible with the Sony CLIÉ Handheld.

# Sony CLIÉ Handheld components

## Locating the display and keyboard panel controls



### **1** Display panel

Open, or open and rotate to use the CLIÉ handheld in various “styles.” For details, see “Changing the operating style” on page 17.

### **2** Camera (PEG-NR70V/U only)

Rotates to face the subject of your photograph.

When not in use, rotate the camera towards the keyboard panel until it clicks into place.

### **3** CAPTURE Button (PEG-NR70V/U only)

Press to capture still images with the camera.

### **4** Headphone jack

Plug into the supplied headphones jack with a remote control unit or stereo mini jack. For details, see “Connecting/attaching the supplied headphones” in the Add-on Applications Guide.

### **5** Jog Dial™ Navigator

Used to select and run applications or items. Depending on the application you use, specific functions are assigned to the navigator. For details, see “Using the Jog Dial™ navigator” in the Operating Instructions manual.

Continued on next page

## Sony CLIÉ Handheld components

### 6 BACK Button

Deselects an item or cancels the operation. Depending on the application you use, returning to the previous screen or other specific functions are assigned to this button.

### 7 HOLD Switch

Protects your CLIÉ handheld from accidental tapping on the screen or pressure on the POWER button when you are carrying your CLIÉ handheld. If you slide this switch while the power is on, the screen display turns off, even during an operation.

Sliding the switch again deactivates HOLD and resumes normal operation.

### 8 Screen

Displays the applications and information stored in your CLIÉ handheld. It is touch-sensitive and responds to the stylus. For details, see “Elements of the CLIÉ interface” on page 19.

### 9 LED indicator

Flashes to notify you at a given time if you set an alarm in Date Book or the World Alarm Clock application. Also lights while charging the battery and turns off when charging is complete.

### 10 POWER Button

Turns your CLIÉ handheld on or off. Also, press the POWER button and hold it down for two seconds or longer to turn the backlight of the LCD display on or off.

The power indicator lights while the power is on.

#### Tip

If your CLIÉ handheld is turned off, pressing any application button activates your CLIÉ handheld and opens the corresponding application.

### 11 Application Buttons

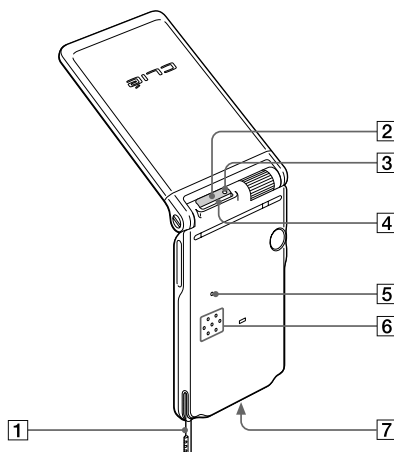
Activates the individual applications that correspond to the icons on the buttons: ☺≡ Date Book, 📞 Address Book, ☰ To Do List, and 📝 Memo Pad. See “Assigning applications to buttons” in the Operating Instructions manual for details on reassigning these buttons to activate any application on your CLIÉ handheld.

**12 Scroll Button**

Displays text and other information that extends beyond the area of the screen. Pushing the scroll button downwards scrolls down to display information below the current viewing area, and pushing the button upwards scrolls up to display the information above the current viewing area. Depending on the application you use, specific functions are assigned to the scroll button.

**13 Hardware Keyboard**

Used to enter texts and other commands.

**Locating back panel components****1 Stylus**

Used to tap icons and buttons on the screen or to write characters on the Graffiti writing area.

For details, see “Using the stylus” in the Operating Instructions manual.

Continued on next page

## Sony CLIÉ Handheld components

### **2 Infrared Communication Port (IR port)**

Uses infrared technology to:

- transmit data to and receive data from other CLIÉ or Palm OS® handhelds and to perform HotSync® operations.

For details, see “Beaming between your Sony CLIÉ Handheld and another Palm OS® PDA” in the Operating Instructions manual.

- remotely control devices with the CLIÉ Remote Commander application. For details, see Chapter 8 in the Add-on Application Guide.

### **3 Memory Stick Access Indicator**

Lights in orange while your CLIÉ handheld is reading data from or writing data to Memory Stick media.

### **4 Memory Stick™ Slot**

Insert Memory Stick media into this slot.

### **5 Reset Button**

Resets your CLIÉ handheld when it freezes. Under normal use, you should not have to use this button.

For details, see “Resetting your Sony CLIÉ Handheld” in the Operating Instructions manual.

### **6 Speaker**

Speaker for the beep, sound alarm, and audio.

### **7 Interface Connector**

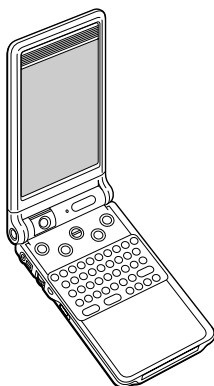
Used to connect your CLIÉ handheld to the cradle or to other accessories for the CLIÉ handheld (not supplied).



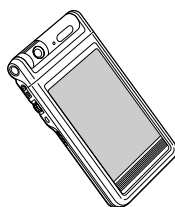
## Changing the operating style

Your CLIE handheld can be used with the display panel set in three different styles:

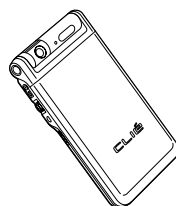
- the convenient “opened style”
- the compact “turned style”
- the screen-guarding “carrying style.”



Opened style



Turned style



Carrying style

When using the CLIE handheld, set it to either the “opened style” (to enter data with the hardware keyboard) or the “turned style” (to enter data with the stylus), whichever you prefer.

In this and other supplied manuals, the operation steps will usually be described with the CLIE handheld in the “turned style.”

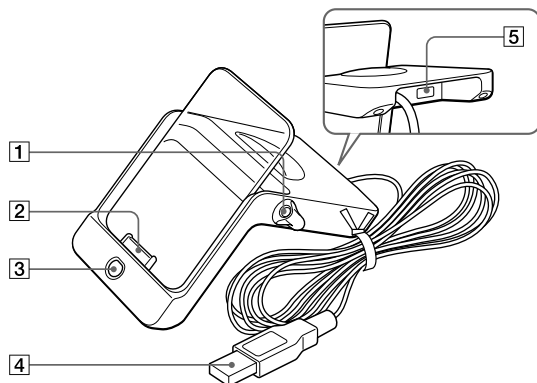
When carrying your CLIE handheld around in your bag or pocket, set it to the “carrying style.” You cannot enter data, but will be able to continue listening to music, operating with the remote controller.

### Notes

- The display panel in the “opened style” will not open wider than 160 degrees.
- When you have a camera module inserted in your CLIE handheld's Memory Stick slot, take care not to hit the module when opening the display panel.

## Sony CLIÉ Handheld components

### Locating cradle components



#### 1 Stylus holder

When you place your CLIÉ handheld on the cradle, keep the stylus here.

#### 2 Interface Connector

Connect your CLIÉ handheld here.

#### 3 HotSync® Button

Synchronizes data in your CLIÉ handheld with the data saved on your computer.

For details, see “Exchanging and updating data using a HotSync® operation” in the Operating Instructions manual.

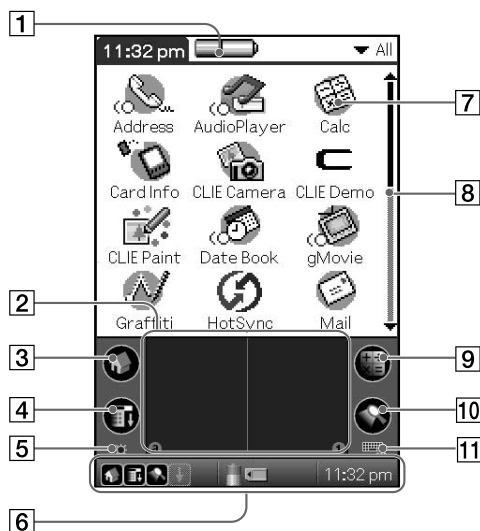
#### 4 USB Connector

Connects to your computer’s USB port.

#### 5 AC Adapter Connector

Connect the supplied AC adapter here.

## Elements of the CLIÉ interface



### 1 Battery Icon

Displays the remaining charge in the battery. When your CLIÉ handheld is placed in the cradle or operates on the AC power source, the battery charging icon (🔌) is displayed. Tapping the icon shows the battery's remaining charge by percentage and the amount of unused memory available in your CLIÉ handheld.

### 2 Graffiti Writing Area

This area is for hand writing input with the Graffiti alphabet. When you use the software keyboard, the keyboard display will replace the Graffiti writing area.

### 3 Home Icon

Tap this icon and the Application Launcher screen appears, displaying a list of applications.

Continued on next page

## Sony CLIÉ Handheld components

### 4 Menu Icon

Tap this icon to display the menus of the current application.

### 5 Brightness Adjustment Icon


Tap this icon to adjust the brightness level of the LCD screen of your CLIÉ handheld.

#### Note


If the digitizer preferences are not set correctly, you cannot adjust the brightness level properly. For details, see “Adjusting the screen” in the Operating Instructions manual.


### 6 Status Bar


Displays the following icons for all applications. Additional icons appear according to the applications in use.

 : Tap to show or hide the Graffiti writing area (for Graffiti compatible applications only).

 : Tap this icon to display the Application Launcher screen.

 : Tap this icon to display the menus of the current application.

 : Tap this icon to open the Find screen.

 : Appears when a Memory Stick media is inserted.

 : Displays the battery's remaining charge.

### 7 Application Icon

Tap an icon to activate the corresponding application.

### 8 Scroll Bar

Drag the slider up or down or tap the scroll arrows (▲ or ▼) on the ends of the bar to scroll the screen.

### 9 Calculator Icon

Tap this icon to display the on-screen Calculator.


### 10 Find Icon

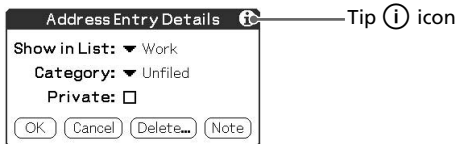
Tap this icon to open the Find screen.

### 11 Software Keyboard Icon

Tap this icon to switch the display between the Graffiti writing area and the software keyboard.

**Tip**

When the tip  icon is displayed, you can tap the icon to display online operational tips on the screen.



# What is on the CLIÉ Installation CD-ROM?

## CD-ROM contents

The Installation CD-ROM that comes with your CLIÉ handheld contains the following applications and manuals:

### ■ PC applications

You can install the following PC applications and related online help files from the installer's main launcher window:

- Palm Desktop for CLIÉ 4.0.1  
(including Intellisync Lite 4.0)
- Sonic Stage™ LE
- PictureGear™ 4.5Lite
- QuickTime® 5
- Memory Stick™ Export
- Sound Converter
- CLIÉ Mail Conduit
- Documents to Go

The following PC application has a separate installer package:

- Adobe Acrobat Reader® 5.0

### ■ Palm OS applications

You can install the following Palm OS® applications on your CLIÉ handheld:

- CLIÉ Mail
- World Alarm Clock
- CLIÉ Remote Commander

The following sample data and demonstration files are also available:

- CLIÉ Demo
- Sample data for gMovie and PictureGear Pocket
- Sample sound files
- Sample Skin files for Audio Player

## ■ Manuals

The following manuals are available as PDF files on the CD-ROM:

- Read This First (this guide)
- Operating Instructions
- Add-on Application Guide

### Tip

You can view the manuals by clicking Manuals in the installation launcher window that appears when you insert the CLIE Installation CD-ROM into your computer.

## How to read the PDF manuals on the CD-ROM

To view the PDF manuals available on the Installation CD-ROM, you need the Acrobat Reader software installed on your computer. To install the Acrobat Reader software, see “Installing Acrobat Reader® 5.0” on page 56.

To open a PDF manual, do either of the following:

- Double-click a PDF file on the CD-ROM.

The Acrobat Reader software starts and the selected PDF manual is displayed. You can read and print the file.

- Start the Acrobat Reader software, and select Open from the File menu. In the Open dialog box, select a PDF file, and click Open.

The selected PDF manual is displayed. You can read and print the file.





---

# Chapter 2

---

## *Setting up your Sony CLIÉ Handheld – Basics*

This chapter describes basic hardware setup procedures that you should perform before you start using your CLIÉ handheld. These procedures include: charging your CLIÉ handheld with the cradle, synchronizing data with your computer, and entering data.

---


### Contents

Step 1: Charging your Sony CLIÉ Handheld .....	26
Step 2: Turning on your Sony CLIÉ Handheld for the first time ..	27
Opening the display panel .....	27
Making the initial setting .....	28
Step 3: Entering data into your Sony CLIÉ Handheld .....	32
Step 4: Installing the Palm™ Desktop for CLIÉ software on your computer .....	35
Step 5: Connecting your Sony CLIÉ Handheld and your computer via the cradle .....	39
Step 6: Performing a HotSync® operation for the first time .....	40

# Step 1: Charging your Sony CLIÉ Handheld

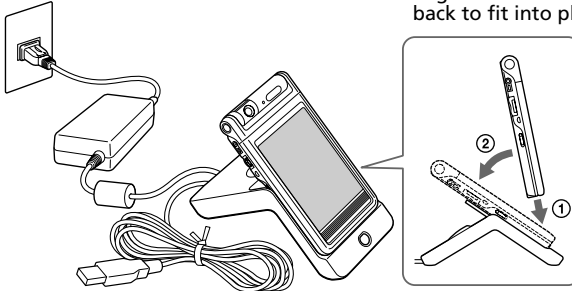
## Note

Before you use your CLIÉ handheld for the first time, make sure to charge it.

First connect the supplied cradle to an AC power source in advance. Charging will start as soon as you place your CLIÉ handheld on the cradle. The battery icon on the screen changes to the battery charging icon (  ).

It takes about four hours for your CLIÉ handheld to be fully charged for the first time. Subsequent charges, if your CLIÉ handheld is charged frequently, will require less time.


To the wall outlet



Insert your CLIÉ handheld at an angle to the cradle and lay it back to fit into place.

When you place your CLIÉ handheld on the cradle, the LED indicator of your CLIÉ handheld turn on, and charging starts.

## When charging is completed

The LED indicator of your CLIÉ handheld turns off. When you remove your CLIÉ handheld from the cradle, the battery charging icon changes to the battery icon (  ).

## Note

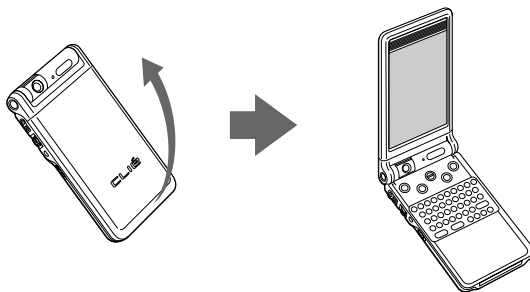
If the battery in your CLIÉ handheld is fully discharged, all data stored on the DRAM (memory) is lost. Performing another HotSync® operation once the battery is recharged can restore information saved from the last HotSync operation.

## Step 2: Turning on your Sony CLIE Handheld for the first time

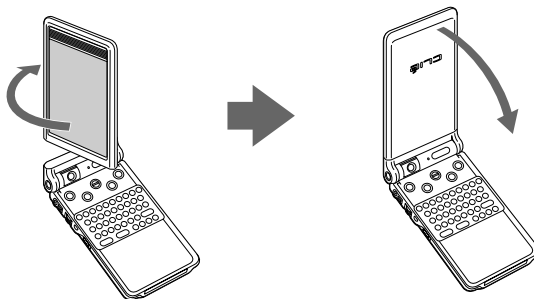
### Opening the display panel

To operate on your CLIE handheld, set your CLIE handheld to the “opened style” or the “turned style.” Here, the steps guide you to the “turned style.”

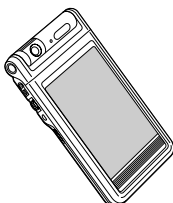
- 1 Open the display panel until it clicks into place.  
The “carrying style” changes to the “opened style.”



- 2 Rotate the display clockwise until it clicks into place, then fold it over the keyboard.



Your CLIE handheld is now in the “turned style.”



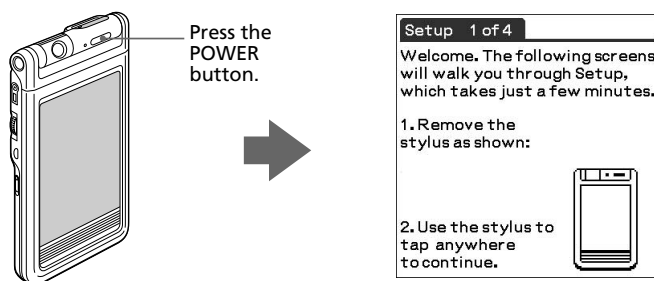
## Step 2: Turning on your Sony CLIÉ Handheld for the first time

### Making the initial setting

The first time you turn on your CLIÉ handheld, setup instructions appear on the screen. Follow the on-screen instructions to configure the initial settings, including calibrating the digitizer and setting the current time, date, and year. (This configuration is necessary for operation of the CLIÉ handheld).

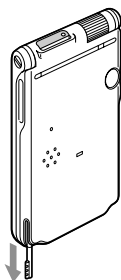
#### 1 Press the POWER button.

Your CLIÉ handheld turns on, and the Welcome screen appears. After a while, the Setup screen appears.



#### 2 Take out the Stylus.

You can use the stylus to tap or drag on the screen to open applications, choose options or menu commands, and select text or move objects, just as you do with a mouse on your computer.



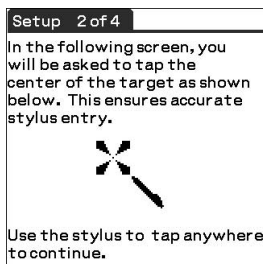
#### Note

Always use the point of the stylus for tapping or making strokes on the handheld screen. Never use a real pen, pencil, or other sharp object to write on the screen.

### 3 Press lightly on the screen with the stylus.

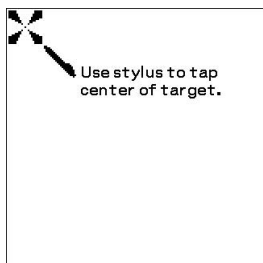
This action is called “tapping.”

The digitizer calibration screen appears. Calibration aligns the internal circuitry of the handheld with its touch-sensitive screen so your CLIE handheld can detect the task you want to perform when you tap an element on the screen.



### 4 Tap anywhere on the screen.

The following screen is displayed.



## Step 2: Turning on your Sony CLIÉ Handheld for the first time

- 5 Following the on-screen instruction, tap the center of the displayed mark.

### Note

If the digitizer is not configured correctly, the scroll bar may not operate properly, “tapping” may not work as expected, or other problems may occur. If this happens, please re-configure the digitizer manually. You can also re-configure the digitizer in the Digitizer Preferences screen. For details, see “What you can do with Preferences” in the Operating Instructions manual.

After calibration completes, a screen for setting the time and date appears.



Setup 3 of 4

1. Tap arrows and boxes to change settings.

Region: ▼ United States

Time Zone: USA (Pacific)

Daylight Saving: ▼ Off

Set Date: 7/21/01


Set Time: 12:47 pm

2. Tap Next to continue.

Previous Next

- 6 Tap the Set Date box.

The Set Date screen appears.



Set Date

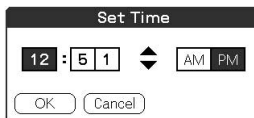
◀ 20 ▶

Jan	Feb	Mar	Apr	May	Jun	
Jul	Aug	Sep	Oct	Nov	Dec	
S	M	T	W	T	F	S
1	2	3	4	5	6	7
8	9	10	11	12	13	14
15	16	17	18	19	20	21
22	23	24	25	26	27	28
29	30	31				

Cancel Today

- 7 Tap the arrow ◀ or ▶ next to the year to select the current year.
- 8 Tap the current month, then tap the current date. The Set Date screen closes.

- 9** Tap the Set Time box.  
The Set Time screen appears.



- 10** Tap the arrow ▲ or ▼ to set the hour to the current time.
- 11** Tap each number of the minute, and then tap the arrow ▲ or ▼ to set the minutes to the current time.
- 12** Tap AM or PM.
- 13** Tap OK.  
The Set Time screen closes.
- 14** Tap Next.  
The Setup Complete screen appears.
- 15** Tap Next.  
The Enter Data screen appears.
- 16** Tap Done.  
The initial settings are complete, and the Application Launcher screen (Home screen) appears.



Your CLIE handheld is now ready for use!

# Step 3: Entering data into your Sony CLIÉ Handheld

There are five ways to enter data into your CLIÉ handheld:

- Using the hardware keyboard
- Using Graffiti® writing
- Using the software keyboard (replaces the Graffiti writing area)
- Using the on-screen keyboard (appears additionally to the Graffiti writing area)
- Using your computer keyboard

## Hardware keyboard

The hardware keyboard on your CLIÉ handheld closely resembles your computer keyboard and can be used in the same way.

To enter the numbers and marks printed in blue, press the character key and the Fn key together. Aside from entering text, you can scroll up, down, and sideways with the arrow keys.

For details, see "Using the hardware keyboard" in the Operating Instructions manual.

## Graffiti writing

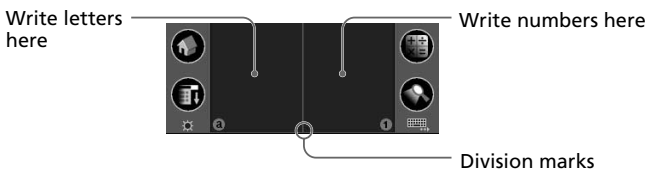
Your CLIÉ handheld includes the Graffiti writing application as the primary system for entering text and numbers. With Graffiti writing, you write simple strokes with the stylus, and they are instantly recognized as letters or numbers.

The Graffiti strokes closely resemble the uppercase letters of the regular alphabet, which makes Graffiti writing easy to learn.



Graffiti writing examples:  
A, B, C, D, and E

The Graffiti writing area displayed on the LCD screen is divided into two parts: one for writing the letters of the alphabet and one for writing numbers. The small marks at the top and bottom of the Graffiti writing area indicate the two areas.



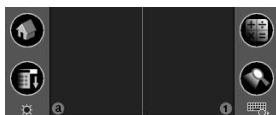
For details, see "Using Graffiti® writing to enter data" in the Operating Instructions manual.



## Software keyboard

When you use an application such as Date Book or Address Book, you can switch the Graffiti writing area to the software keyboard to enter data.

To switch to the software keyboard, tap the software keyboard icon on the Graffiti writing area.



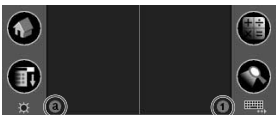
Tap here to switch between the software keyboard and the Graffiti writing area

After the display switches to the alphabetic keyboard, you can tap to switch to the international keyboard or the symbol keyboard. For details, see “Using the software keyboard” in the Operating Instructions manual.

## On-screen keyboard

When you use an application such as Date Book or Address Book, you can open a keyboard on-screen above the Graffiti writing area to enter data.

To open the on-screen alphabetic or numeric keyboard, tap the following icon on the Graffiti writing area.



Tap here for alphabetic keyboard

Tap here for numeric keyboard

After a keyboard is open, you can tap to open any of the other keyboards, including the international keyboard. For details, see “Using the on-screen keyboard” in the Operating Instructions manual.

Continued on next page

---

## Step 3: Entering data into your Sony CLIÉ Handheld

### Computer keyboard

If you have a lot of data to enter or prefer to use the computer keyboard, you can use the Palm™ Desktop for CLIÉ software or any supported PIM (Personal Information Management) applications to enter information. You can then perform a HotSync® operation to synchronize the information on your computer with the information on your CLIÉ handheld. All the main applications on your CLIÉ handheld are also available in the Palm Desktop for CLIÉ software and in most PIM applications, so you don't need to learn different applications. Refer to the Palm Desktop for CLIÉ online Help for more information on entering data using your computer.

## Step 4: Installing the Palm™ Desktop for CLIÉ software on your computer

The Palm™ Desktop for CLIÉ software extends many of the functions of your CLIÉ handheld to your computer and featuring the same main applications as those on your CLIÉ handheld: Address Book, Date Book, To Do List, Memo Pad, and desktop e-mail connectivity. You can use the HotSync® Manager feature of this software to back up and exchange data between your CLIÉ handheld and your computer.

### Notes

- Do not connect the cradle to a USB connector of your computer before installing the Palm Desktop for CLIÉ software. The installation of the software might not be performed correctly.
- If you are already using a Sony CLIÉ Handheld (PEG-S300/S320/S360/N610C/N710C/N760C/T415/T615C) or other Palm™ OS PDA device, and the Palm Desktop software is installed on your computer, uninstall it, and reinstall the Palm Desktop for CLIÉ software using the supplied Installation CD-ROM. For details, see “Upgrading the existing Palm Desktop software” on page 38.
- The Palm Desktop for CLIÉ software supplied with this CLIÉ handheld (PEG-NR70V/U, PEG-NR70/U) does not support the Expense application.
- Do not simply copy the Palm Desktop for CLIÉ software files to your computer’s hard disk. You must use the installer and follow the procedures described in this section to place the files in their proper locations and to decompress the files.
- To introduce the CLIÉ data of your old CLIÉ handheld into the new one, see “Using data of another Sony CLIÉ Handheld” in the Operating Instructions manual.

### 1 Exit all applications running on Windows®.

You should quit all applications that automatically run at startup, such as fax communication software, anti-virus tools, screensavers, and the Microsoft® Office Shortcut Bar.

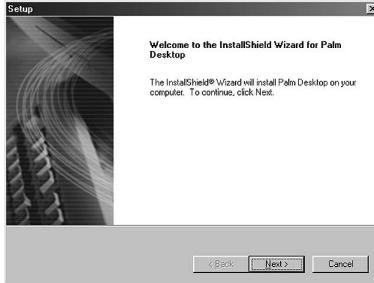
### 2 Insert the Installation CD-ROM into the CD-ROM drive of your computer.

The installation launcher window appears.

## Step 4: Installing the Palm™ Desktop for CLIÉ software on your computer

### 3 Click Install Palm Desktop for CLIÉ.

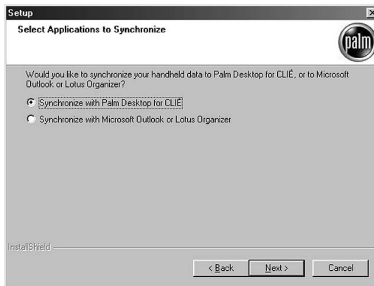
The setup program starts and the Welcome screen is displayed.



### 4 Click Next.

The Palm Desktop for CLIÉ 4.0.1 software installation begins.

Follow the on-screen instructions until the following dialog box appears.

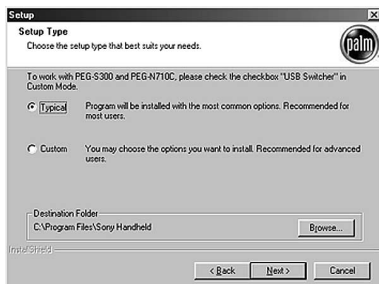


### 5 Select the software you will use to synchronize your CLIÉ handheld with your computer.

If you select "Synchronize with Palm Desktop for CLIÉ," Intellisync Lite will not be installed. If you select "Synchronize with Microsoft Outlook or Lotus Organizer," Palm Desktop and Intellisync Lite will be installed.

## 6 Click Next.

The Setup Type window is displayed.



## 7 Select the setup type (Typical or Custom) and the destination folder.

If you wish to synchronize PEG-S300 or PEG-N710C with your CLIE handheld (PEG-NR70V/U, PEG-NR70/U), follow the steps below:

- ① Select Custom for the setup type, and click Next.
- ② On the select components screen, make sure that USB Switcher is selected.
- ③ Follow the on-screen instructions until setup is complete.

When you follow the on-screen instructions, the Create User Account screen is displayed.

## 8 Fill in the user name in the Create User Account screen.

## 9 Click Next.

The Install Tool dialog box closes, then the Mail Setup dialog box appears.

## 10 Set up Mail.

Follow the on-screen instructions until Mail setup is complete.

---

## Step 4: Installing the Palm™ Desktop for CLIÉ software on your computer

**11** Fill in the customer registration following the instructions shown on the screen.

You must have Internet access for the online customer registration. You can take advantage of Sony's commitment to quality customer support and nine-month extension of the limited warranty (for a total of 12 months from the original date of purchase) when you register your CLIÉ handheld.

**12** Click Finish.

### Note

Make sure you perform a HotSync operation before installing any third-party applications. (See pages 39 - 41)

### Upgrading the existing Palm Desktop software

Multiple versions of Palm Desktop software cannot be installed on one computer. If an older version of Palm Desktop for CLIÉ software already exists, it is recommended that you uninstall it prior to the new installation. All handheld user data is preserved when upgrading the Palm Desktop for CLIÉ software.

### About Intellisync Lite

The Intellisync Lite software allows you to synchronize your Date Book, Address Book, To Do List, and Memo Pad data in your CLIÉ handheld with the data of a variety of popular Windows® applications including:

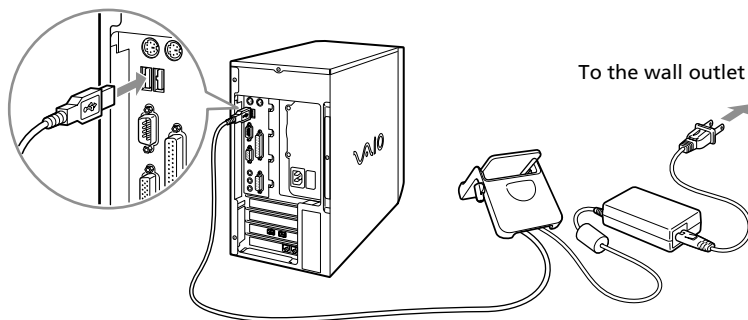
- Microsoft Outlook 97/98/2000/2002
- Lotus Organizer 5.0/6.0

During a HotSync operation, the Intellisync Lite software compares each record of information in your CLIÉ handheld to the information stored in the PIM (Personal Information Management) applications and then makes necessary changes to both systems to make sure that they both contain the same data.

## Step 5: Connecting your Sony CLIÉ Handheld and your computer via the cradle

The cradle that comes with your CLIÉ handheld enables you to synchronize the information on your CLIÉ handheld with the Palm™ Desktop for CLIÉ software on your computer using HotSync® technology.

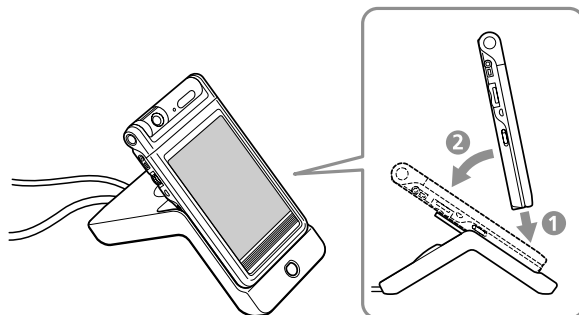
- 1 Connect the USB connector of the cradle to a USB connector on your computer.



- 2 Place your CLIÉ handheld on the cradle.

Your CLIÉ handheld can be in either the “turned style,” “opened style,” or “carrying style” when you place it into the cradle.

Insert your CLIÉ handheld at an angle to the cradle, and lay it back to fit it into place.



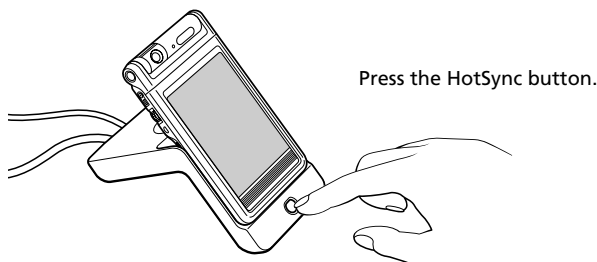
## Step 6: Performing a HotSync® operation for the first time

### What is a HotSync operation?

HotSync, which is a technology particular to a Palm OS® platform device, is the one-step operation that allows you to synchronize data between your CLIÉ handheld and your computer and back up the CLIÉ data on your computer. For details, see “Exchanging and updating data using a HotSync® operation” in the Operating Instructions manual.

When performing a HotSync® operation for the first time, you must enter your user information both into your CLIÉ handheld and into the Palm Desktop for CLIÉ software. After the user name is recognized, you do not have to enter the same information again.

- 1 Press the HotSync  button on the cradle.



The USB Driver Installation Wizard starts automatically.

- 2 When the New User dialog box is displayed on your computer screen, select your user name.

Select the same user name you entered in step 8 on page 37.

#### **Note**

Every handheld should have a unique name. To prevent loss of a user's records, never try to synchronize more than one handheld to the same user name.





### 3 Click OK on your computer screen.

A beep sounds and the HotSync operation starts. When the HotSync process is complete, a message showing the HotSync operation completion is displayed on your CLIÉ handheld.

#### Notes

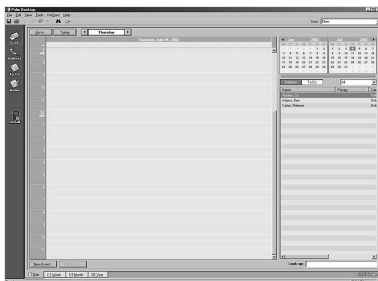
- Do not remove or move your CLIÉ handheld from the cradle during a HotSync operation.
- Do not push the HotSync button during a HotSync operation. It might cause errors and interruption of the operation.
- Do not enter power saving mode during a HotSync operation. If your computer enters power saving mode during a HotSync operation, the HotSync Manager will quit.

#### If the HotSync operation does not start

- Make sure that the HotSync  icon is displayed in the Windows task tray on your computer screen.
- If the HotSync  icon is not shown in the task tray, click Start, point to Programs (All Programs in Windows® XP), Sony Handheld, and then click HotSync Manager. Then click the HotSync button on your CLIÉ handheld to start the HotSync operation.

### 4 To open the Palm™ Desktop for CLIÉ software, double-click the Palm Desktop for CLIÉ icon on the Windows® desktop, or click Start, point to Programs (All Programs in Windows® XP), Sony Handheld, and click Palm Desktop for CLIÉ.

The Palm Desktop for CLIÉ software starts. All the main applications on your CLIÉ handheld are also available in the Palm Desktop for CLIÉ software. You can synchronize the information on your computer with the information on your CLIÉ handheld.





---

# Chapter 3

---

## ***Setting up your Sony CLIÉ Handheld – Advanced***

This chapter describes advanced software setup procedures for your CLIÉ handheld and your computer. These procedures include: checking the bundled applications on your CLIÉ handheld, installing applications from the Installation CD-ROM on your computer, and installing add-on applications on your CLIÉ handheld.

---


### **Contents**

Checking the bundled applications on your Sony CLIÉ Handheld .....	44
Overview of basic Palm OS® applications .....	45
Overview of Sony applications .....	48
Installing the supplied applications on your computer .....	53
Installing SonicStage™ LE .....	53
Installing PictureGear™ 4.5Lite .....	54
Installing QuickTime® 5 .....	54
Installing Memory Stick Export .....	55
Installing Sound Converter .....	55
Installing other third-party applications .....	56
Installing Acrobat Reader® 5.0 .....	56
Uninstalling the supplied applications .....	57
Installing add-on applications on your Sony CLIÉ Handheld or Memory Stick media .....	58
Installing add-on applications from the Palm™ Desktop for CLIÉ software .....	59
Installing add-on applications by beaming them from another Palm OS® device .....	62
Installing add-on applications directly from the Installation CD-ROM menu .....	64
Removing add-on applications .....	65
Customer registration .....	66

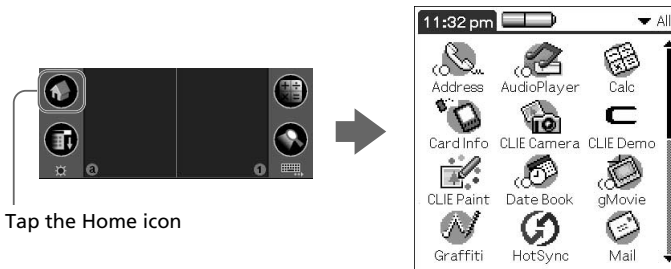
# Checking the bundled applications on your Sony CLIÉ Handheld

After you make your CLIÉ handheld ready for use, start the Application Launcher to display all the available applications on your CLIÉ handheld.

## To open an application from the Application Launcher screen

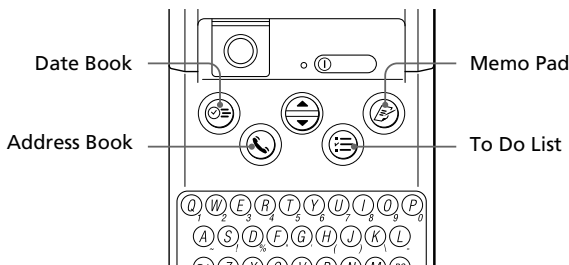
- 1 Tap the on-screen Home  icon.

The Application Launcher screen appears.




- 2 Do either of the following:

- Tap the desired application icon in the Application Launcher screen.  
If you have many applications installed on your CLIÉ handheld, tap the scroll bar to see all the available applications.
- For the four main applications, you can press the application button on the keyboard panel to display the selected application immediately (only in the “opened style”):



## To quit the application and open another application

Tap the Home  icon (or press the BACK button repeatedly), and then perform step 2 to open the desired application. The next time you open the application, the last screen resumes.

## Overview of basic Palm OS® applications

Your CLIÉ handheld comes with the following Palm OS basic applications: Date Book, Address Book, To Do List, Memo Pad, and Calculator. This section gives an overview of these basic applications.

### Date Book



Date Book lets you quickly and easily schedule appointments or any kind of activity associated with a time and date.

In Date Book, you can do the following:

- Enter a description of your appointments and assign them specific dates and times.
- Display a chart of your appointments for an entire week. The Week view makes it easy to spot available times and any potential scheduling overlaps or conflicts.
- Display a monthly calendar to quickly spot days where you have morning, lunch, or afternoon appointments.
- Set an alarm to sound prior to the scheduled activity.
- Create reminders for events that are based on a particular date, rather than time of day. Birthdays and anniversaries are easy to track with your CLIÉ handheld.
- Attach notes to individual events for a description or clarification of the entry in your Date Book.

### Address Book



Address Book enables you to keep names, addresses, phone numbers, and other information about your personal or business contacts.

In Address Book, you can do the following:

- Quickly look up or enter names, addresses, phone numbers, and other information.
- Enter up to five phone numbers (home, work, fax, and so on) or e-mail addresses for each name.

Continued on next page

## Checking the bundled applications on your Sony CLIÉ Handheld

- Define which phone number appears in the Address List for each Address Book entry.
- Attach a note to each Address Book entry, in which you can enter additional information about the entry.
- Assign Address Book entries to categories so that you can organize and view them in logical groups.
- Paste a PictureGear™ Pocket image to an address entry.

### To Do List



To Do List is a convenient place to create reminders and prioritize the things that you have to do.

In To Do List, you can do the following:

- Make a quick and convenient list of things to do.
- Assign a priority level to each task.
- Assign a due date for any or all of your To Do List items.
- Assign To Do List items to categories so that you can organize and view them in logical groups.
- Sort your To Do List items either by due date, priority level, or category.
- Attach notes to individual To Do List items for a description or clarification of the task.

### Memo Pad



Memo Pad provides a place to take notes that are not associated with records in Date Book, Address Book, or To Do List.

In Memo Pad, you can do the following:

- Take notes or write any kind of message on your CLIÉ handheld.
- Drag and drop memos into popular computer applications like the Microsoft® Word software when you synchronize using the Palm™ Desktop for CLIÉ software and HotSync® technology.
- Assign memos to categories so that you can organize and view them in logical groups.
- Write down phone numbers and other types of information. Later, you can copy and paste this information to other applications.

## Calc (Calculator)



Calculator enables you to perform addition, subtraction, multiplication, division, and calculate square roots.

In Calculator, you can do the following:

- Perform basic calculations.
- Store and retrieve values.
- Display the last series of calculations, which is useful for confirming a series of “chain” calculations.

## Checking the bundled applications on your Sony CLIÉ Handheld

### Overview of Sony applications

In addition to the basic Palm OS applications, your CLIÉ handheld also contains original Sony applications. This section describes them.

#### Note

The applications provided with this CLIE handheld (PEG-NR70V/U or PEG-NR70/U) are not guaranteed to work on other devices.

### Audio Player



Audio Player is used to play back ATRAC3 audio files (created and controlled by the SonicStage LE software on your computer), and MP3 audio files.

In Audio Player, you can do the following:

- Playback ATRAC3 and MP3 audio files stored in the Memory Stick® media inserted in your CLIÉ handheld.
- Listen to music with the supplied headphones.
- Check-Out your favorite ATRAC3 audio file from the SonicStage LE software using the cradle.

### CLIÉ Camera (PEG-NR70V/U only)



CLIÉ Camera is used to capture and record still images on your CLIÉ handheld and Memory Stick media.

In CLIÉ Camera, you can do the following:

- Record images in five different sizes (side-long: 320x240 or 160x120, Address book size: 88x88, vertically long: 240x320, 120x160).
- Capture images with added effects and/or the date and time. The white balance and brightness are adjustable as well.
- Jump to the PictureGear Pocket application to view the captured image.

### PictureGear Pocket



The PictureGear Pocket application is an image management software for your CLIÉ handheld.

In the PictureGear Pocket application, you can do the following:



- View images.
- Beam your favorite image files to another CLIÉ handheld.
- Paste an image to your Address Book entry.
- Save DCF images in PGP format on your CLIÉ handheld, or convert PGP format images to DCF format and saving it on an inserted Memory Stick media.
- Select full-screen images to be displayed from the original image or its thumbnail image.

## PhotoStand



The PhotoStand application allows you to display PictureGear Pocket images one by one like a slide show. Placed on the cradle, your CLIÉ handheld functions as a digital picture frame, displaying your chosen images.

In the PhotoStand application, you can do the following:

- Perform a slide show of the PictureGear Pocket images one by one.
- Display the time with the picture so that you can use it as a clock.
- Choose effect patterns or the time display mode.
- Have music play in the background during the slide show.

## CLIÉ Paint



The CLIÉ Paint application is used to draw shapes, letters, or patterns on PGP or DCF format images. You can also draw from scratch on a white background.

In the CLIÉ Paint application, you can do the following:

- Draw on a PGP or DCF format image data (or a white background) using various drawing tools.
- Save edited images on your CLIÉ handheld (in PGP format) or a Memory Stick media.
- Attach DCF- or PGP-format images to e-mail via the CLIÉ Mail application.
- View, draw on, and save the image in different sizes.

Continued on next page

## Checking the bundled applications on your Sony CLIÉ Handheld

### gMovie



The gMovie application is used to play a movie clip created using the PictureGear 4.5Lite software.

In the gMovie application, you can do the following:

- Play a movie file copied from your computer to your CLIÉ handheld.
- Play a movie file directly from Memory Stick media.
- Beam a movie file to another CLIÉ handheld.

### CLIÉ Mail



The CLIÉ Mail application is the e-mail management software for your CLIÉ handheld. You need to install the CLIÉ Mail application from the installation CD-ROM to your CLIÉ handheld.

In the CLIÉ Mail application, you can do the following:

- Read, write, send\* and receive\* e-mail.  
\* Only when your CLIÉ handheld is connected to a network.
- Manage e-mails sent or received by your computer.
- Manage multiple e-mail accounts.
- Assign e-mails to categories so that you can organize and view them in logical groups.
- Attach data such as Address Book entries and image files to e-mail.

### MS Gate



The Memory Stick Gate (MS Gate) application is used to exchange Memory Stick data to and from your CLIÉ handheld.

In the MS Gate application, you can do the following:

- Copy or move data between your CLIÉ handheld and Memory Stick media.
- Delete data in Memory Stick media and in your CLIÉ handheld.
- Format Memory Stick media.

### MS Autorun



The Memory Stick Autorun (MS Autorun) application is used to start a specified application when Memory Stick media is inserted into your CLIÉ handheld.

In the MS Autorun application, you can do the following:

- Automatically start game software or other applications stored in Memory Stick media.
- Display specified data immediately by automatically starting the associated application stored in Memory Stick media or your CLIÉ handheld.

## MS Import



The Memory Stick Import (MS Import) application is used in combination with the Memory Stick Export (MS Export) software to transfer computer data between your computer and CLIÉ handheld by using a Memory Stick media rather than by performing a HotSync operation. You need to install the MS Export software from the Installation CD-ROM on your computer (The MS Import application is pre-installed on your CLIÉ handheld).

In MS Import/Export, you can do the following:

- Install CLIÉ applications directly on the Memory Stick media inserted in your CLIÉ handheld without performing a HotSync operation.
- View and handle the contents of the Memory Stick media inserted in your CLIÉ handheld as a removable device.
- Copy files between your computer's hard disk and the Memory Stick media with the Windows® Explorer.
- Choose folders other than the default folder to store CLIÉ handheld data.

## MS Backup



The Memory Stick Backup (MS Backup) application is used to back up your CLIÉ data on a Memory Stick media, unlike the HotSync operation that backs up data to your computer.

In the MS Backup application, you can do the following:

- Backup CLIÉ data on a Memory Stick media inserted in your CLIÉ handheld.
- Restore the backed up data from Memory Stick media on the CLIÉ handheld once again.

Continued on next page

---

## Checking the bundled applications on your Sony CLIÉ Handheld

### World Alarm Clock



The World Alarm Clock application is software to use your CLIÉ handheld as a world clock. You need to install the World Alarm Clock application from the Installation CD-ROM to your CLIÉ handheld.

In the World Alarm Clock application, you can do the following:

- View the date and time of multiple regions on a single screen. Daylight Saving Time settings are also available.
- Use your CLIÉ handheld as an alarm clock to alert you at a particular day and time. You can also set your favorite sound as its alarm.

### CLIÉ Remote Commander



The CLIÉ Remote Commander application is used to operate various multiple remote-controlled devices such as a TV, VCR, DVD player, or AV amplifier with just your CLIÉ handheld. You need to install the CLIÉ Remote Commander application from the Installation CD-ROM to your CLIÉ handheld.

In the CLIÉ Remote Commander application, you can do the following:

- Use your CLIÉ handheld as a remote control for up to four devices, switching among them with just a single tap on the short-cut button. You can also control more devices by selecting from the Select menu.

### Sound Utility



The Sound Utility application is used to play back and manage sound files imported from your computer.

In the Sound Utility application, you can do the following:

- Play back, delete, and change the name of the sound data.

# Installing the supplied applications on your computer

From the installation launcher window of the supplied CLIÉ Installation CD-ROM, you can install the following software on your computer's hard disk.

## Installing SonicStage™ LE

The SonicStage LE software utilizes Sony's copyright protection technology (OpenMG) and allows you to store and play digital audio files on your computer's hard disk, and then transfer them (Check-Out) as ATRAC3 files to a Sony digital music player such as your CLIÉ handheld for portable listening.

### Note

Do not simultaneously press the Alt key and the Tab key of your computer during the installation process.

- 1** Insert the Installation CD-ROM into your computer's CD-ROM drive.  
The installation launcher window is displayed.
- 2** Click Install CLIÉ Utilities.  
The CLIÉ utilities window is displayed.
- 3** Click Install CLIÉ Audio Software.  
The Audio Software installation window is displayed.
- 4** Click SonicStage LE.  
The SonicStage LE software installation starts. Follow the on-screen instructions.
- 5** After the installation is complete, click Restart.  
The installation ends and your computer restarts.

### Note

Do not delete, move, or edit the installed folders using Windows® Explorer or any other application, or the SonicStage LE database may become unstable or damaged.

## Installing the supplied applications on your computer

### Installing PictureGear™ 4.5Lite

The PictureGear 4.5Lite software allows you to transfer image or movie files between your computer and your CLIÉ handheld. You can use the PictureGear Pocket or the gMovie application to view the transferred movie or image files on your CLIÉ handheld.

- 1** Insert the Installation CD-ROM into your computer's CD-ROM drive.

The installation launcher window is displayed.

- 2** Click Install CLIÉ Utilities.

The CLIÉ utilities window is displayed.

- 3** Click Install CLIÉ Image Software.

- 4** Click Install PictureGear Lite.

The PictureGear 4.5Lite software installation starts.

Follow the on-screen instructions to complete the installation.

### Installing QuickTime® 5

The QuickTime 5 software allows you to view QuickTime movies and is required for PictureGear Lite software to convert QuickTime movies for use on your CLIÉ handheld.

- 1** Insert the Installation CD-ROM into your computer's CD-ROM drive.

The installation launcher window is displayed.

- 2** Click Install CLIÉ Utilities.

The CLIÉ utilities window is displayed.

- 3** Click Install CLIÉ Image Software.

- 4** Click Install QuickTime.

The QuickTime 5 software installation starts.

Follow the on-screen instructions to complete the installation.

## Installing Memory Stick Export

To use the MS Import/Export feature, you need to install the MS Export software, a PC tool to save an application on the proper directory in the Memory Stick media, on your computer.

- 1** Insert the Installation CD-ROM into your computer's CD-ROM drive.  
The installation launcher window is displayed.
- 2** Click Install CLiÉ Utilities.  
The CLiÉ Utilities window is displayed.
- 3** Click Install Memory Stick Export.  
The software installation starts.  
Follow the on-screen instructions to complete the installation.

## Installing Sound Converter

The Sound Converter software allows you to convert "WAVE format" or "Standard MIDI File Format 0" files on your computer to the sound data compatible with your CLiÉ handheld. You can play back the converted data on your CLiÉ handheld with the Sound Utility application.

- 1** Insert the Installation CD-ROM into your computer's CD-ROM drive.  
The installation launcher window is displayed.
- 2** Click Install CLiÉ Utilities.  
The CLiÉ Utilities window is displayed.
- 3** Click Install Sound Converter.  
The software installation starts.  
Follow the on-screen instructions to complete the installation.

## Installing the supplied applications on your computer

### Installing other third-party applications

You can install other add-on applications on your computer and then install them on your CLIE handheld at the next HotSync® operation. For details, see “Installing add-on applications from the Palm™ Desktop for CLIE software” on page 59.

- 1** Insert the Installation CD-ROM into your computer’s CD-ROM drive.

The installation launcher window is displayed.

- 2** Click Third-party Software.

The Third-party Software installation window is displayed.

- 3** Click the application of your choice.

The installation starts.

Follow the on-screen instructions to complete the installation.

### Installing Acrobat Reader® 5.0

The Acrobat Reader 5.0 software allows you to view, navigate, and print Adobe Portable Document Format (PDF) documents. To open and read the PDF manuals in the CLIE Installation CD-ROM, you need the Acrobat Reader software installed in your computer’s hard disk.

- 1** Insert the Installation CD-ROM into your computer’s CD-ROM drive.

The installation launcher window is displayed.

- 2** Click Exit to close the installation launcher window.

- 3** Click Start from the taskbar, then click Run.

The Run window is displayed.

- 4** Type or select “D:\PC\Acrobat\ar500enu.exe” in the text box, and click Run. (“D:” substitutes the drive letter of your CD-ROM drive.)

You can also use Browse to select the setup program.

The Acrobat Reader 5.0 software installation starts.

Follow the on-screen instructions to complete the installation.



## Uninstalling the supplied applications

In the event that you no longer need an application you installed, you can remove an application from your computer's hard disk as follows:

- 1** Click Start from the taskbar, point to Settings, and click Control Panel.

The Control Panel window is displayed.

- 2** Double-click Add/Remove Programs.

The Add/Remove Programs Properties window is displayed.

- 3** In the Install/Uninstall tab, select the software that you want to remove.

- 4** Click Add/Remove.

The confirmation dialog box is displayed.

- 5** Click OK to remove the software.

Follow the on-screen instructions to remove the application from your computer's hard disk.

### Tip

Some applications have their own uninstaller program. To remove the QuickTime software, for example, click Start on the taskbar, point to Programs (All Programs in Windows® XP), QuickTime, and then click Uninstall QuickTime.

# Installing add-on applications on your Sony CLIÉ Handheld or Memory Stick media

Your CLIÉ handheld comes with various applications, such as Date Book, Address Book, To Do List, Memo Pad, Calculator, and the e-mail application.

In addition to these applications, you can install additional applications called “add-on applications” from the Installation CD-ROM on your CLIÉ handheld. You can also install add-on applications on Memory Stick media (sold separately) if you want to save your CLIÉ handheld’s memory space. A variety of third-party applications are also available for your CLIÉ handheld, such as games and other software that run on the Palm OS®. For information on the latest third-party applications, see the Sony official CLIÉ Web site (<http://www.sony.com/clié/>).

## Notes

- Add-on applications reside in the RAM memory of your CLIÉ handheld. Performing a hard reset deletes all the add-on applications. However, if, before performing a hard reset, you back up the data in your CLIÉ handheld by performing a HotSync® operation or by using the MS Backup application, you can restore the add-on applications afterwards.
- The add-on applications available on the CLIÉ Installation CD-ROM are copied on your computer’s hard disk when you install the Palm™ Desktop for CLIÉ software. To install these applications from the Palm Desktop for CLIÉ software on your CLIÉ handheld, follow the procedures described in the next section.

## Installing add-on applications from the Palm™ Desktop for CLIÉ software

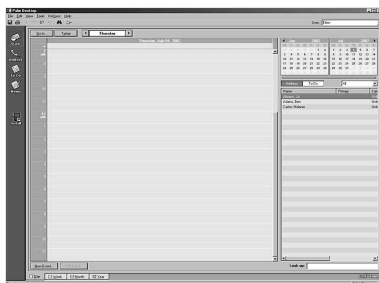
This section describes how to install add-on applications on your CLIÉ handheld or to the Memory Stick media using the Install Tool during a HotSync® operation.

- 1 Copy or download the application you want to install into the Add-on folder in the Sony CLIÉ Handheld folder on your computer (example : C:\Program Files\Sony Handheld\Add-on).

If you want to copy to a different folder, specify the folder in step 5.

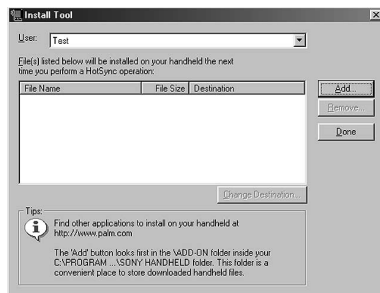
- 2 Double-click the Palm Desktop for CLIÉ software icon on the Windows® desktop, or click Start, point to Programs (All Programs in Windows® XP), Sony Handheld, and click Palm Desktop for CLIÉ.

The Palm Desktop for CLIÉ software starts.



- 3 Click Install.

The Install Tool dialog box appears.



Continued on next page

## Installing add-on applications on your Sony CLIÉ Handheld or Memory Stick media

**4** From the User drop-down list, select a user name to use.

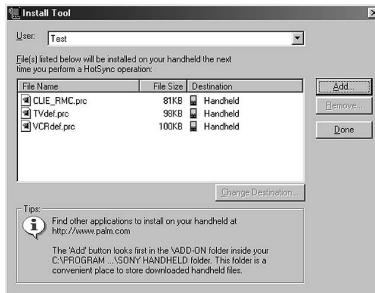
**5** Click Add.

The Open File dialog box appears. The supplied add-on applications are stored in the Add-on folder.

**6** Select the application(s) you want to install on your CLIÉ handheld.

In the Install Tool dialog box, the list of applications you selected is displayed.

If you do not want to install an application, select it, and then click Remove. (The application is deleted from the list but remains on your computer's hard disk.)



**7** Click Done.

**8** Click OK.

**9** Perform a HotSync operation.

The application(s) you selected in step 6 will be installed on your CLIÉ handheld. See page 40 (Step 6: Performing a HotSync® operation for the first time) for details on performing a local HotSync operation.

## To access the Install Tool dialog box

Do either of the following to display the Install Tool dialog box immediately:

- Click Start on the taskbar, point to Programs (All Programs in Windows® XP), Sony Handheld, and then click Install Tool.
- Double-click any file with a PRC, or PDB file extension.

## To install applications to the Memory Stick media

You can install applications to the Memory Stick media by performing one of the following:

- Use the MS Import/Export applications to install applications directly on an inserted Memory Stick media (See the Add-on Applications Guide for details).
- Install applications through the Palm Desktop for CLIÉ software by clicking Change Destination after performing step 6 on page 60. Click the file name(s) to select the file(s), then click the arrow (>> or <<) button to select Memory Stick as the destination, and click OK. Then proceed to step 7.

### Note

When installing add-on applications to the Memory Stick media, be sure to perform the HotSync operation with the Memory Stick media inserted in your CLIÉ handheld.

### If you installed applications to the Memory Stick media through Palm Desktop for CLIÉ software

With some applications, your CLIÉ handheld may not be able to display data if you installed the application in the Memory Stick media.

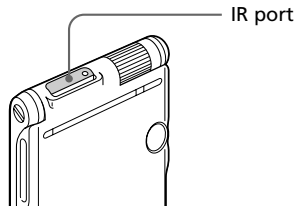
This is because the Palm Desktop for CLIÉ software installs application data in the /PALM/Launcher directory when Memory Stick is selected. As a result, some application data cannot be started through normal process.



If the application you installed in the Memory Stick media fail to start, copy the data again, this time to your CLIÉ handheld. For details, see “Copying data in Memory Stick media to your CLIÉ handheld” in the Operating Instructions manual.

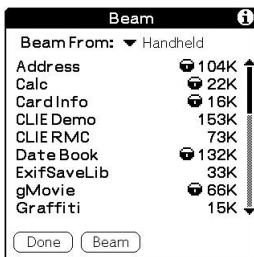
## Installing add-on applications on your Sony CLIÉ Handheld or Memory Stick media

### Installing add-on applications by beaming them from another Palm OS® device

Your CLIÉ handheld is equipped with an IR (infrared) port that you can use to beam an application to another Palm OS® device that is close by and that also has an IR port. You can beam applications that are either installed in your CLIÉ handheld or stored in inserted Memory Stick media. The IR port is located at the top of your CLIÉ handheld, behind the small dark shield.

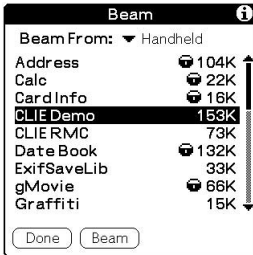


- 1** Tap the Home  icon.  
The Application Launcher screen appears.
- 2** Tap the Menu  icon.  
The menu is displayed.
- 3** Tap Beam.  
The Beam screen appears.



- 4** Tap the arrow ▼ next to Beam From, and select Handheld or Card.

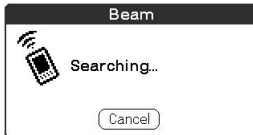
- 5** Tap the application you want to transfer.



**Note**

Some applications are copy-protected and cannot be beamed. These are listed with the lock icon next to them.

- 6** Tap Beam.
- 7** When the Beam dialog box appears, point the IR port directly at the IR port of the receiving handheld.



**Tip**

For best results, the handhelds should be 4 to 8 inches (approximately 10 to 20 centimeters) apart, and the path between the two handhelds must be clear of obstacles. Beaming distance to other Palm OS PDA devices may be different.

- 8** Wait for the Beam dialog box to indicate that the transfer is complete before you continue using your CLIE handheld.

## Installing add-on applications on your Sony CLIÉ Handheld or Memory Stick media

### Installing add-on applications directly from the Installation CD-ROM menu

You can also install applications directly from the supplied Installation CD-ROM menu to your CLIÉ handheld. You do not have to start the Palm Desktop for CLIÉ software.

- 1** Insert the Installation CD-ROM into the CD-ROM drive of your computer.
- 2** Click Install CLIÉ Add-on Applications.
- 3** Click CLIÉ Add-ons.  
InstallShield Wizard starts and the Select Components window appears.
- 4** Click the check box to select the add-on applications you wish to install.
- 5** Click Next.
- 6** From the User name drop-down list, select your CLIÉ handheld's user name.
- 7** Click OK.
- 8** Click Done.
- 9** Perform a HotSync operation.

The application(s) you selected in step 3 will be installed on your CLIÉ handheld. See page 40 (Step 6: Performing a HotSync® operation for the first time) for details on performing a local HotSync operation.





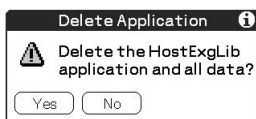
## Removing add-on applications

If the memory of your CLIE handheld or Memory Stick media is full, or you decide that an add-on application is no longer needed, you can remove it from your CLIE handheld or the Memory Stick media.

### Note

You can remove only add-on applications, patches, and extensions that you have installed. You cannot remove the standard applications provided with your CLIE handheld, such as Address Book or Memo Pad.

- 1 Tap the Home  icon.  
The Application Launcher screen appears.
- 2 Tap the Menu  icon.  
The menu is displayed.
- 3 Tap Delete.  
The Delete screen appears.
- 4 Tap the arrow ▼ next to Delete From, and select Handheld or Card.
- 5 Tap the application you want to delete, and tap Delete.  
A confirmation message for Delete Application is displayed.



- 6 Tap Yes.  
The application you selected in step 5 is deleted.  
To cancel deletion, tap No.
- 7 Tap Done.  
The Application Launcher screen appears again.

---

# Customer registration

If you did not fill in the customer registration after installing the Palm™ Desktop for CLIÉ software, follow the instructions in this section to complete the registration.

**Note**

Your computer needs to be connected to the internet to complete the registration.

- 1** Double-click the Sony CLIÉ Registration icon on the Windows® desktop, or click Start on the taskbar, point to Programs (All Programs in Windows® XP), Sony Handheld, and then click Sony CLIÉ Registration.

The Sony CLIÉ Handheld Registration screen appears.

- 2** Click Start your registration process.  
Your computer connects to the Internet, and the user registration Web page at the following URL is displayed:

<http://www.sony.com/clie/register/>

- 3** Follow the on-screen instructions.



