

# Add-on Application Guide

Personal Entertainment Organizer

CLiÉ

PEG-T615C/PEG-T415

---

## Chapter 1

PictureGear Pocket

---

## Chapter 2

CLiÉ Paint

---

## Chapter 3

gMovie player

---

## Chapter 4

World Alarm Clock

---

## Chapter 5

CLiÉ Remote Commander

---

## Chapter 6

Sound Utility/  
Sound Converter

---

## Chapter 7

MS Autorun

---

## Chapter 8

MS Import/Export

---

## Chapter 9

Additional information

## On the supplied software

- Copyright laws prohibit reproducing the software or the software manual in whole or in part, or renting the software without the permission of the copyright holder.
- In no event will SONY be liable for any financial damage or loss of profits, including claims made by third parties, arising out of the use of the software supplied with this player.
- In the event a problem occurs with this software as a result of defective manufacturing, SONY will replace it at SONY's option or issue a refund. However, SONY bears no other responsibility.
- The software provided with this player cannot be used with equipment other than that which it is designated for use with.
- Please note that, due to continued efforts to improve quality, the software specifications may be changed without notice.

Program © 2001 Sony Corporation, © 2001 Palm, Inc. or its subsidiaries. All rights reserved.

Documentation © 2001 Sony Corporation

Sony, Memory Stick, the Memory Stick logo, Jog Dial, and PictureGear are trademarks of Sony Corporation.

Graffiti, HotSync, and Palm OS are registered trademarks, and the HotSync logo and Palm are trademarks of Palm, Inc. or its subsidiaries.

IBM and PC/AT are registered trademarks of International Business Machines Corporation.

Microsoft, Windows, Windows NT, Outlook and the Windows 98 logo are registered trademarks of Microsoft Corporation.

MMX and Pentium are registered trademarks of Intel Corporation.

AvantGo, the AvantGo Client and the AvantGo logo are registered trademarks of AvantGo, Inc.

Pumatech, the Pumatech logo, Intellisync and Intellisync Lite are trademarks of Pumatech, Inc. that may be registered in some jurisdictions.

Adobe and Adobe Acrobat Reader are trademarks of Adobe Systems Incorporated.

QuickTime and the QuickTime logo are trademarks used under license. QuickTime is registered in the U.S. and other countries.

This product includes fonts owned by TypeBank Co., Ltd. under license.

All other trademarks are trademarks of their respective owners.

Sample movies and music: cocoro.prc  
(from DVD Hawaiian Breeze - KOHALA Collection (CCBN-27013))

Music: Mango Cooler (Composed by Charles Michael Brotman. Performed by KOHALA)

Copyright © 2001 cocoronetworks, inc.

Copyright © 1998, 2001 Palm Records, Inc.

All rights reserved.

<http://www.cocoronet.com/en/>

## CAUTION

Please contact your nearest Sony dealer regarding the problem you are experiencing with your Sony product.

# Table of Contents

## Chapter 1

Viewing image files (PictureGear Pocket)	
<b>What you can do with PictureGear Pocket .....</b>	<b>10</b>
<b>Installing .....</b>	<b>11</b>
Installing the PictureGear 4.4Lite software on your computer .....	11
<b>Viewing image files stored in your CLIÉ handheld .....</b>	<b>12</b>
Transferring image files to your CLIÉ handheld .....	12
Viewing image files with your CLIÉ handheld .....	14
<b>Viewing image files stored in Memory Stick media .....</b>	<b>18</b>
<b>Copying image files .....</b>	<b>20</b>
Saving image files stored on your CLIÉ handheld to a Memory Stick media (Export) .....	20
Saving image files stored on a Memory Stick media to your CLIÉ handheld (Import) .....	21
<b>Displaying image files one after another (PhotoStand) .....</b>	<b>23</b>
Making a PhotoStand setting .....	23
Starting PhotoStand .....	24
<b>Viewing sample image files .....</b>	<b>25</b>
<b>How to read the online manual .....</b>	<b>26</b>
<b>PictureGear Pocket menu items .....</b>	<b>27</b>
Photo list screen .....	27
Image file screen .....	28

## Chapter 2

Drawing on image files (CLIÉ Paint)	
<b>What you can do with CLIÉ Paint ...</b>	<b>32</b>
<b>Installing .....</b>	<b>33</b>
Installing the CLIÉ Paint application on your CLIÉ handheld .....	33
<b>Starting CLIÉ Paint .....</b>	<b>34</b>
To work on a white background .....	34
To work on a PictureGear Pocket image .....	34
<b>Drawing with CLIÉ Paint .....</b>	<b>35</b>
Elements of the edit screen .....	35
Painting with the tools .....	37
<b>Saving edited images .....</b>	<b>39</b>
Saving edited image files on your CLIÉ handheld .....	39
<b>How to read the online manual .....</b>	<b>40</b>

Continued on next page

# Table of Contents

## Chapter 3

Playing a movie (gMovie player)	
<b>What you can do with</b>	
<b>gMovie player</b> .....	42
<b>Installing</b> .....	43
Install PictureGear 4.4Lite software on your computer .....	43
<b>Playing movies with your CLIÉ handheld</b> .....	44
Transferring movies to your CLIÉ handheld .....	44
Playing movies .....	46
<b>Playing sample movie files</b> .....	48
<b>How to read the online manual</b> .....	49
<b>gMovie menu items</b> .....	50
Media list screen .....	50
Movie file screen .....	50

## Chapter 4

Viewing the World Alarm Clock (World Alarm Clock)	
<b>What you can do with</b>	
<b>World Alarm Clock</b> .....	52
<b>Installing</b> .....	53
<b>Using the World Alarm Clock</b> .....	54
Viewing world time .....	54
Setting the clock alarm .....	55
Stopping the alarm .....	58
<b>How to read the online manual</b> .....	59
<b>World Alarm Clock menu items</b> .....	60

## Chapter 5

Using your CLIÉ handheld as a remote commander (CLIÉ Remote Commander)	
<b>What you can do with CLIÉ Remote Commander</b> .....	62
<b>Installing</b> .....	63
<b>Preparing the CLIÉ Remote Commander for your use</b> .....	64
Assigning devices to the CLIÉ Remote Commander .....	64
Assigning operations to the application buttons and Jog Dial navigator .....	67
<b>Using the CLIÉ handheld as a remote commander</b> .....	69
Remote-controlling a device .....	69
Viewing the device name assigned to each quick-start button .....	70
<b>How to read the online manual</b> .....	71
<b>CLIÉ Remote Commander menu items</b> .....	72

## Chapter 6

Importing your favorite sounds  
(Sound Utility/Sound Converter)

What you can do with Sound

Converter/Sound Utility ..... 74

Installing ..... 75

Installing the Sound Utility application  
on your CLIÉ handheld ..... 75

Installing the Sound Converter software  
on your computer ..... 76

Storing sound data in your CLIÉ  
handheld ..... 77

Transferring sound data to your CLIÉ  
handheld ..... 77

Setting an imported sound data as an  
alarm sound ..... 78

Managing sound data ..... 79

Playing sound data on your CLIÉ  
handheld ..... 79

Deleting a sound data ..... 80

Changing the name of a sound data ..... 81

Sorting the sound data list ..... 81

Sound Utility menu items ..... 82

## Chapter 7

Setting the Memory Stick  
automatic start function  
(MS Autorun)

What you can do with

MS Autorun ..... 84

Setting Auto-run for an  
application ..... 86

How to read the online manual ..... 88

MS Autorun menu items ..... 89

## Chapter 8

Copying the data to the Memory  
Stick media on your CLIÉ handheld  
(MS Import/Export)

What you can do with

MS Import/Export ..... 92

Installing ..... 93

Installing CLIÉ applications using  
MS Import/Export ..... 94

Using your CLIÉ handheld as a  
removable disk ..... 96

How to read the online manual ..... 97

MS Import menu items ..... 98

## Chapter 9

Additional information

Index ..... 100

Appendix ..... 102

Manufacturing companies  
supported by the CLIÉ Remote

Commander application ..... 102

# About this manual

Welcome to the Sony Personal Entertainment Organizer (referred to as the “Sony CLIÉ Handheld” or “CLIÉ handheld” in this manual).

Your Sony CLIÉ Handheld comes with three manuals:

## Read This First

The Read This First manual gives you an overview of your CLIÉ handheld’s features, hardware and software setup, installation instructions, and other important details. Before reading the other manuals, read the Read This First manual.

## Operating Instructions

The Operating Instructions manual describes all you need to know about how to use your CLIÉ handheld and the Personal Information Management (PIM) applications that come with it.

This manual shows you how to:

- Turn on and off your CLIÉ handheld, reset the CLIÉ handheld, and enter data in greater detail (**Chapter 1**)
- Use the Personal Information Management applications: Date Book, Address Book, To Do List, Memo Pad, and Calculator (**Chapter 2**)
- Perform a HotSync operation with your computer (**Chapter 3**)
- Exchange data with another handheld using beaming or Memory Stick media (**Chapter 4**)
- Personalize your CLIÉ handheld with your own preferences settings (**Chapter 5**)
- Maintain your CLIÉ handheld and use the Troubleshooting guide and other technical information (**Chapter 6**)

## **Add-on Applications Guide (this manual)**

The Add-on Applications Guide describes how to install and use the supplied add-on applications, including;

- PictureGear™ Pocket/PhotoStand/PictureGear 4.4Lite
- CLIÉ Paint
- gMovie™
- World Alarm Clock
- CLIÉ Remote Commander
- Sound Utility/Sound Converter
- MS Autorun
- MS Import/Export

The three manuals all describe operations of two models of the CLIÉ handheld (PEG-T615C and PEG-T415). All illustrations of the unit are of PEG-T415, unless specified otherwise. Points of difference between the two models are described in their relative sections.





---

# ***Chapter 1***

---

## ***Viewing image files (PictureGear Pocket)***

This chapter describes how to view image files on your CLiÉ handheld.

---

# What you can do with PictureGear Pocket

PictureGear Pocket is a picture album application for your CLIÉ handheld.

## **Anytime anywhere...**

You can store still image files from various sources, including those taken with a digital camera or downloaded from the Internet to your CLIÉ handheld, using PictureGear Pocket application. You can look at your favorite image files anytime and anywhere.

## **Using PictureGear Pocket as a photo stand or a clock**

Using the PhotoStand function, you can display image files that are drawn on a computer or image files taken with a digital camera.

You can also use your CLIÉ handheld to display the current time on your CLIÉ handheld screen while using the PhotoStand function.

## **Beaming my image files ...**

Use IR (Infrared) communication to exchange image files easily with other CLIÉ handheld users. You cannot beam image files to other Palm OS based devices.

## **Pasting an image file to an address entry**

You can paste an image to an address entry.

For details, refer to the Operating Instructions manual.

# Installing

**You do not have to install the PictureGear Pocket application on your CLIÉ handheld**

The PictureGear Pocket application is factory pre-installed. This section describes how to install the PictureGear 4.4Lite software.

## Installing the PictureGear 4.4Lite software on your computer

You can convert the image files stored in your computer using the PictureGear 4.4Lite software. To view image files or movies with your CLIÉ handheld, use the PictureGear Pocket application or the gMovie player respectively.

- 1** Insert the Installation CD-ROM into the CD-ROM drive.  
The installation launcher window appears.
- 2** Select the model of your CLIÉ handheld (PEG-T615C or PEG-T415).
- 3** Click Install CLIÉ Utilities.
- 4** Click Install PictureGear Lite.  
The PictureGear 4.4Lite software installation starts.  
Follow the onscreen instructions to finish installation.
- 5** Click Exit.

### To start PictureGear 4.4Lite

From the Start Menu, click Programs (All Programs in Windows® XP), PictureGear 4.4Lite, and PictureGear 4.4Lite.

For details on how to use the PictureGear 4.4Lite software, see the Help files of the PictureGear 4.4Lite software.

# Viewing image files stored in your CLIÉ handheld

You can transfer image files taken by a digital still camera or downloaded from the Internet, etc. to your CLIÉ handheld. These items can be managed using the PictureGear 4.4Lite software on your computer. You can also optimize the photos for displaying them on your CLIÉ handheld using PictureGear 4.4Lite software before transferring them to your CLIÉ handheld.

For details on how to save image files in the format supported by PictureGear 4.4Lite software, refer to the instruction manual of the devices or imaging software you are using.

## Transferring image files to your CLIÉ handheld

Prepare and format the image files you want to display on your CLIÉ handheld with the PictureGear 4.4Lite software, and then transfer them to your CLIÉ handheld.

### **1** Start PictureGear 4.4Lite software.

See page 12 for details.

### **2** Select the image file you want to send.

You can also select multiple images by holding down the Ctrl or Shift keys while clicking.

### **3** From the File menu, select Output services and then Install the image during the next HotSync.

The User name dialog box appears.

### **4** Click the arrow ▼ to the right of the text box, and then select a user name.

If necessary, click “Still settings” and set the size and compression for the image file you want to send in the Settings for PictureGear dialog box.

### **5** Click OK.

The image file you want to send and the user name are registered in PictureGear software.

### **6** Place your CLIÉ handheld on the cradle, then press the HotSync button on the cradle.

The registered image file(s) are automatically sent to your CLIÉ handheld during the HotSync operation.

## To save an image file to a Memory Stick media

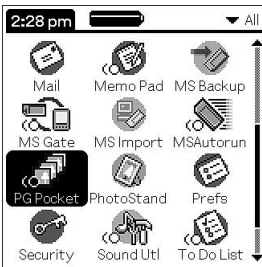
You can also transfer image files directly to a Memory Stick media. Install the MS Export software on your computer beforehand (page 93).

- 1** Connect the cradle to a computer in which you have installed the MS Export software.
- 2** Insert a Memory Stick media in your CLIE handheld.
- 3** Place your CLIE handheld on the cradle.
- 4** On the Application Launcher screen of your CLIE handheld, rotate the Jog Dial navigator to select MS Import and press the Jog Dial navigator.  
Or, tap the MS Import icon on the Application Launcher screen.  
The MS Import application starts.
- 5** Start the PictureGear 4.4Lite software on your computer.
- 6** Select the desired image on the PictureGear 4.4Lite software.
- 7** From the File menu on the same screen, click Output services, then select "Output CLIE Handheld format file to MemoryStick."  
The "Output CLIE Handheld format file to MemoryStick" dialog box appears.
- 8** From the list next to Save into drive, select the Memory Stick drive.
- 9** Click OK.

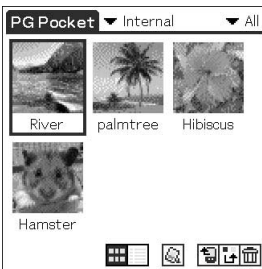
## Viewing image files stored in your CLIÉ handheld

### Viewing image files with your CLIÉ handheld

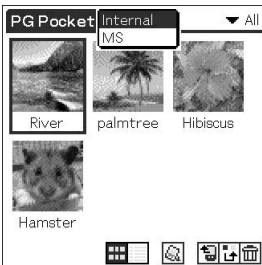
- 1 On the Application Launcher screen, rotate the Jog Dial navigator to select PG Pocket and then press the Jog Dial navigator.  
Or, tap the PG Pocket icon on the Application Launcher screen.



PictureGear Pocket application starts.



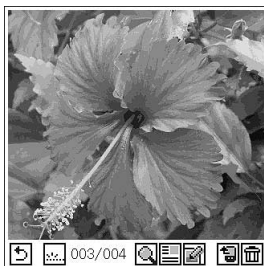
- 2 Tap the arrow ▼ on the top center of the screen to select Internal.




- 3 Rotate the Jog Dial navigator to display the desired image file, then press the Jog Dial navigator.

Or, tap the desired image.

The selected image appears.




- 4 When you want to hide icons displayed at the bottom of your CLIÉ handheld screen, tap  (hide icons).

When you want to display them again, tap the screen, or press the Jog Dial navigator or the BACK button.

- 5 When you want to show another image file, rotate the Jog Dial navigator.


Another image file appears.

- 6 To return to the photo list screen, tap , or press the BACK button.

To return from the detailed information screen to the image file list screen, tap Close on the lower right of the screen or press the BACK button.

## Viewing image files stored in your CLIÉ handheld


### Viewing detailed information for the image file

Tap  (detailed) while the image file is displayed.


Detailed information for the image file appears.



### Magnifying image files

- 1 Tap  while the image file is displayed.
- 2 Rotate the Jog Dial navigator to magnify the image file.  
When you press the Jog Dial navigator, the image file is automatically magnified on the screen.  
If you rotate the Jog Dial navigator counter-clockwise, the image is magnified. If you rotate the Jog Dial navigator clockwise, the image is reduced.
- 3 If part of the image is outside the bounds of the screen, you can pan by dragging on the screen with your stylus.
- 4 To return to the photo list screen, press the BACK button.

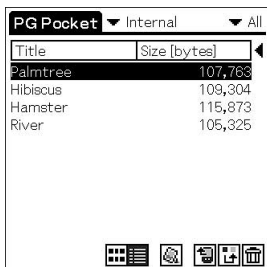
### Drawing on image files (CLIÉ Paint)

You can draw and paint on a PGP format image file stored on your CLIÉ handheld with the CLIÉ Paint application. To start the CLIÉ Paint application, tap  while the image file is displayed. For details on the CLIÉ Paint application, see pages 31-40.

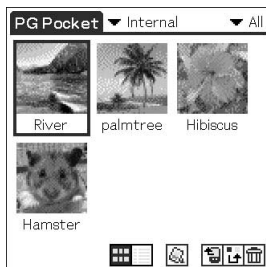


## Changing the image file list screen

You can change the image file list screen to display items by name and date, or by thumbnail image.



By name and date  
(List mode)




By thumbnail image  
(Preview mode)

### To display the image file list by name and date (List mode)

Tap .

### To display the image file list by thumbnail image (Preview mode)

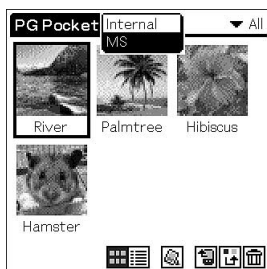
Tap .

# Viewing image files stored in Memory Stick media

Image files shot by a digital still camera or digital video camera recorder and recorded in a Memory Stick media are stored in the DCF (Design rule for Camera File system) format. This format differs from the PGP format which is the standard for the PictureGear Pocket application.

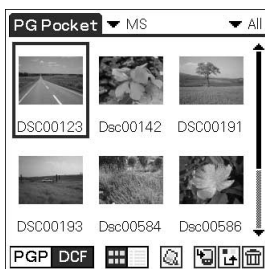
You can view both PGP format image files and DCF format image files using the PictureGear Pocket application. In addition, you can convert DCF format image files into PGP format image files, and save them to your CLIÉ handheld or Memory Stick media.

- 1** On the Application Launcher screen, rotate the Jog Dial navigator to select PG Pocket and press the Jog Dial navigator.  
Or, tap the PG Pocket icon on the Application Launcher screen.  
The PictureGear Pocket application starts.
- 2** Insert the Memory Stick media into the Memory Stick slot.
- 3** Tap the arrow ▼ on the top center of the screen to select MS.



- 4** If you want to view DCF image files taken by digital still cameras or etc., tap DCF.

If you want to view image files converted by the PictureGear Pocket application or the PictureGear 4.4Lite software, tap PGP.



#### Note

You cannot move, copy or transfer DCF format image files using the MS Gate application. However, you can convert them into PGP format image files using PictureGear Pocket application, and save them to your CLIÉ handheld.

#### Notes on DCF format

- DCF (Design rule for Camera File system) is an industry standard format for storing image files established by JEIDA (Japan Electronic Industry Development Association).
- Using the PictureGear Pocket application, you cannot view image files shot by a device that does not support the DCF format such as the Sony digital video camera recorder DCR-TRV9000 or Sony digital still camera DSC-D700/D770.
- DCF format image files are stored in the DCIM directory of the Memory Stick media.
- For best results, use the PictureGear 4.4Lite software on your computer to convert the images to PGP format before storing them in a Memory Stick media.

# Copying image files

## Saving image files stored on your CLIÉ handheld to a Memory Stick media (Export)

**1** Display the image file that you want to save (page 14).

**2** Tap  (Import/Export).

The Import/Export dialog box appears.

- To change the category of the image files, tap the arrow ▼ and select the desired category.
- If you want to delete the original image file stored on your CLIÉ handheld, tap the check box next to Delete the original image.
- If you want to print the image with a DPOF (Digital Print Order Format)-compatible printer, tap DCF, then tap to select Print setting (DPOF). The selected image file will be saved on Memory Stick media in DPOF.

**3** Tap OK.

The selected image file is saved to the Memory Stick media.

### Note

If you save images marked in DPOF to the Memory Stick media, all DPOF settings for image files previously stored on the Memory Stick media will be overwritten and cleared.

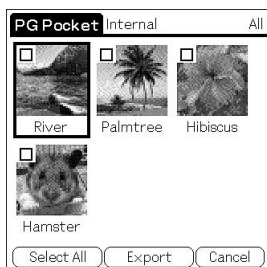
### To cancel the operation

Tap Cancel in step 3 above.

## Saving multiple image files to a Memory Stick media at once


**1** In the photo list screen, tap  (Import/Export).

The check boxes used for selecting the image files appear.



- 2** Tap the check boxes to select the image files you want to save.
- 3** Tap Export.  
The Import/Export dialog box appears.
- 4** Tap OK.

## Saving image files stored on a Memory Stick media to your CLIÉ handheld (Import)

- 1** Display the image file that you want to save (page 14).
- 2** Tap  (Import/Export).  
The Import/Export dialog box appears.
  - To change the category of the image files, tap the arrow ▼ and select the desired category.
  - If you want to delete the original image file stored on the Memory Stick media, tap the check box next to Delete the original image.
- 3** Tap OK.  
The selected image file is converted to the PGP format and saved to the CLIÉ handheld. Depending on the image file, this may take a few seconds.


### To cancel the operation

Tap Cancel in step 3 above.

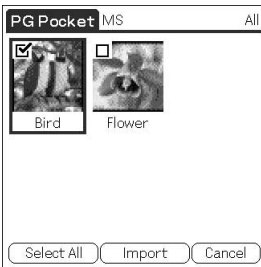
## Copying image files

### Saving multiple image files to your CLIÉ handheld at once

You can copy both DCF and PGP format image files from a Memory Stick media to your CLIÉ handheld with the following procedure. The DCF image files will be automatically converted into PGP format.

- 1** In the photo list screen, tap  (Import/Export).

The check boxes used for selecting the image files appear.



- 2** Tap the check boxes to select the image files you want to save.

- 3** Tap Import.

The Import/Export dialog box appears.

- 4** Tap OK.


The selected image files are saved to the CLIÉ handheld. Depending on the image file, this may take a few seconds.

# Displaying image files one after another (PhotoStand)

You can display image files one after another when you place your CLIÉ handheld on the cradle (PhotoStand function).

You can also use your CLIÉ handheld as a clock by displaying the current time using the PhotoStand application.

## Making a PhotoStand setting

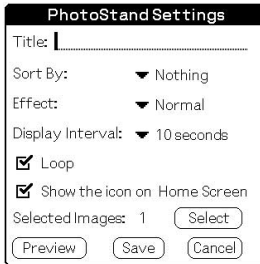
- 1 In the photo list screen of PictureGear Pocket, tap  (PhotoStand).

The check boxes used for selecting the image files appear.

- 2 Tap to select the image file(s) which you want to display with the PhotoStand function.

- 3 Tap PhotoStand.

The PhotoStand application starts, and the PhotoStand Settings screen appears.



- 4 Make your settings.

- **Title:** Enter the desired Photo Stand title.
- **Sort By:** Select the order in which to display the image files.
- **Effect:** Select the transition effect to be used between images or choose the clock type.
- **Display Interval:** Set an interval to determine the length of time an individual image file will be displayed.
- **Loop:** If you do not want to repeat image files automatically from the start, tap to deselect this check box.

Continued on next page

## Displaying image files one after another (PhotoStand)

- **Show the icon on Home Screen:** If you do not want to show the icon of the file set for PhotoStand application on the Application Launcher screen, tap to deselect this check box.
- **Autorun:** If you want to start PictureGear Pocket application when you insert the Memory Stick media into your CLIÉ handheld, tap to select this check box. This option appears only if you select the images stored on the Memory Stick media for the PhotoStand.

### 5 Tap Save.

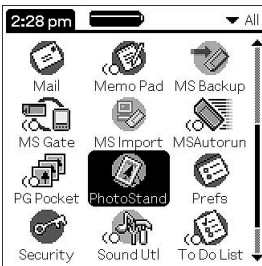
The image files that you selected in step 2 and the settings you made in step 4 are saved with a PhotoStand title.

#### Note

Do not copy the Photostand settings to/from the Memory Stick media from/to the CLIÉ handheld. A malfunction may occur.

## Starting PhotoStand

- 1 On the Application Launcher screen, rotate the Jog Dial navigator to select PhotoStand and then press the Jog Dial navigator. Or, tap the PhotoStand icon on the Application Launcher screen.



PhotoStand application starts.

- 2 Tap the PhotoStand title that you want to play.
- 3 Tap Start.

Image files in the selected category appear one after another.

### Exiting PhotoStand

Press the Jog Dial navigator or tap the screen.

**For the PhotoStand title lists stored on the Memory Stick media**



# Viewing sample image files

You can view sample image files installed on your computer. Install the Palm Desktop for CLIÉ software to your hard disk using the supplied CD-ROM and then place your CLIÉ handheld on the cradle.

- 1** Double-click the Palm Desktop for CLIÉ icon on the Windows desktop.

The Palm Desktop for CLIÉ software starts.

- 2** Click Install.

The Install Tool dialog box appears.

- 3** Select a user name from the user list.

- 4** Click Add.

Make sure that the Add-on folder is selected.

If the Add-on folder is not selected, select the folder manually.

At the default setup, Add-on folder is stored in the Sony Handheld folder of the Program Files folder.

- 5** Double-click the PGPocket Samples folder.

- 6** Double-click the sample image file you want to view on the screen of your CLIÉ handheld.

The selected image file name is added to the File Name list.

If you want to view other sample images, repeat this step.

- 7** Click Done.

- 8** Press the HotSync button on the cradle.

The selected sample image files will be installed on your CLIÉ handheld.

- 9** Start PictureGear Pocket.

For details, see page 14.

---

# How to read the online manual

Detailed information on the PictureGear Pocket application is provided in the online manual in the supplied CD-ROM.

To view the online manual, the Adobe Acrobat Reader version 4.0 or higher must be installed on your computer.

- 1** Insert the supplied CD-ROM in your computer's CD-ROM drive.

The install screen appears automatically.

- 2** Select the model of your CLIÉ handheld (PEG-T615C or PEG-T415).

- 3** Click Manuals.

- 4** Double-click PictureGear Pocket Manual.pdf.

The online manual appears.

## If the Acrobat Reader software is not installed/updated

- 1** Insert the supplied CD-ROM in your computer's CD-ROM drive.

The install screen appears automatically.

- 2** Click Exit.

- 3** Double-click the My Computer icon on the Windows desktop.

- 4** Right-click the CD-ROM drive icon, then click Open from the shortcut menu.

- 5** Double-click the PC folder.

- 6** Double-click the Acrobat folder.

- 7** Double-click ar500enu.exe to install the Acrobat Reader onto your computer.

# PictureGear Pocket menu items

The following items appear when you tap the MENU icon.

This section describes the menu commands specific to the PictureGear Pocket application.

## Photo list screen

### View menu

#### List

Changes the view of the photo list screen.

#### PhotoStand

Starts the PhotoStand application.

### Image menu

#### Import/Export

Shows the import/export screen.

Tap the check boxes to select the image file(s) you want to import/export. For details, see “Copying image files” on page 20.

#### Delete

Shows the Delete screen.

Tap to select the image file(s) you want to delete. For details, refer to the online manual.

#### Categorize

Shows the Categorize screen.

Tap to select the image file(s) you want to categorize. For details, refer to the online manual.

Continued on next page

## PictureGear Pocket menu items

### Options menu

#### **Preference (available only when you view image files stored in the Memory Stick media)**

Shows the Preference screen.

Tap to select the default image format.

#### **About PictureGear Pocket**

Shows the version information of the PictureGear Pocket application.

## Image file screen

### View menu

#### **Back**

Returns to the photo list screen.

#### **Details**

Shows detailed information for the image file.

#### **Zoom**

Magnifies the image file. For details, see “Magnifying image files” on page 16.

#### **First Image**

Shows the first image file.

#### **Prev Image**

Shows the previous image file.

#### **Next Image**

Shows the next image file.

#### **Last Image**

Shows the last image file.

#### **Hide tool bar**

Hides the tool bar at the bottom of the screen. Tap the image to show the hidden tool bar.

## Image menu

### Import/Export

Imports/exports the currently selected image file. For details, see “Copying image files” on page 20.

### Delete

Deletes the currently selected image file. For details, refer to the online manual.

### Beam

Beams the currently selected image file to another CLIÉ handheld.

### CLIÉ Paint

The CLIÉ Paint application starts.

## Options menu

### Preference

Shows the Preference screen.

### About PictureGear Pocket

Shows the version information of PictureGear Pocket application.



---

# ***Chapter 2***

---

## ***Drawing on image files (CLÍÉ Paint)***

This chapter describes how to draw on image files on your CLÍÉ handheld.

---

# What you can do with CLIÉ Paint

CLIÉ Paint is a drawing tool application used to draw on PictureGear Pocket images.

## **Drawing on image files stored on your CLIÉ handheld**

Using the CLIÉ Paint application, you can draw and paint on a PGP format image file stored on your CLIÉ handheld.

### **Notes**

- The CLIÉ Paint application is compatible with the 16 bit color PictureGear Pocket format (PGPF), and is not compatible with 8 bit color formats.
- Images in color will be displayed in monochrome for the monochrome display models.



# Installing

## Installing the CLIÉ Paint application on your CLIÉ handheld

You can install the CLIÉ Paint application via your computer's hard disk. Place your CLIÉ handheld on the cradle, and install the Palm Desktop for CLIÉ software on your computer from the supplied CD-ROM.

- 1** Double-click the Palm Desktop for CLIÉ icon on the Windows desktop.

The Palm Desktop for CLIÉ software starts.

- 2** Click Install.

The Install Tool dialog box appears.

- 3** Select a user name from the user list.

- 4** Click Add.

Make sure that the Add-on folder is selected.

If the Add-on folder is not selected, select it manually.

At the default setup, the Add-on folder is stored in the Sony Handheld folder of the Program Files folder.

- 5** Double-click the CLIÉ Paint folder.

- 6** Double-click the following folder.

- For PEG-T615C: Color folder
- For PEG-T415: Mono folder

- 7** Double-click the following file.

- For PEG-T615C: CLIÉPaint.prc
- For PEG-T415: CLIÉPaint\_m.prc

The selected file is added to the File Name list.

- 8** Repeat steps 4 to 6 and double-click CPStamp.pdb.

CPStamp.pdb is added to the File Name list.

- 9** Click Done.

- 10** Press the HotSync button on the cradle.

The file specified in step 6 is installed on your CLIÉ handheld during the HotSync operation.

# Starting CLIÉ Paint

## To work on a white background

- 1 On the Application Launcher screen, rotate the Jog Dial navigator to select CLIÉ Paint and then press the Jog Dial navigator.

Or, tap the CLIÉ Paint icon on the Application Launcher screen.

- 2 Tap to select the screen size of your drawing (320×320, 320×240, 160×160, or 160×120).

A white drawing area of the selected size is displayed.


## To work on a PictureGear Pocket image

- 1 Display the desired image file on the screen following steps 1 to 3 of “Viewing image files with your CLIÉ handheld” on page 14.

- 2 Tap  shown on the bottom.

The CLIÉ Paint application starts.

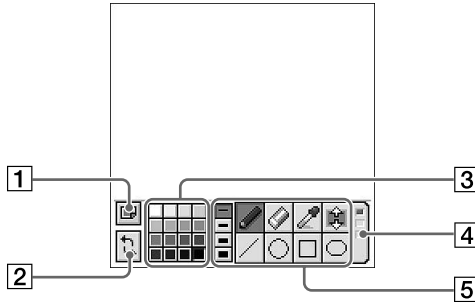
### **You cannot choose images stored on a Memory Stick media**

If you tap  while you are viewing images stored on the Memory Stick media with the PictureGear Pocket application, a message appears and the CLIÉ Paint application does not start.

If the image file you wish to edit is stored on the Memory Stick media, you must import it to the CLIÉ handheld using the PictureGear Pocket application before starting the CLIÉ Paint application. For details on how to import the image files, see page 21.

# Drawing with CLIÉ Paint

## Elements of the edit screen



### 1 Menu Button

Displays the menu screen.

- **New Image:** Displays a new white background to draw on.
- **Load Image:** Imports a PGP formatted image stored on the CLIÉ handheld to the CLIÉ Paint application.
- **Over-write:** Over-writes the former image with the edited one (the former image will not remain).
- **Save As:** Saves the edited image under a new name (the image before editing will remain).
- **i:** Shows the version information of the CLIÉ Paint application.

### 2 UNDO/REDO

Cancels the last operation (UNDO), or when tapped right after UNDO, recovers the cancelled operation (REDO).

Continued on next page

## Drawing with CLIÉ Paint

### 3 Color palette

Shows the color or a grayscale shade for drawing letters or objects.

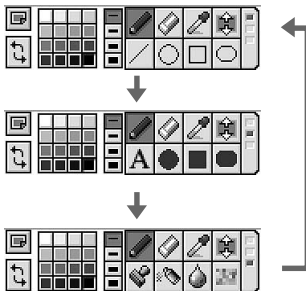
**PEG-T615C:** Choose the color/shade from the palette. The bottom left tab of the palette shows the presently selected color/shade (including color/shade sampled with the color sampler tool).

To edit the selected color/shade, tap the bottom left tab. Tapping it displays the color-picker and the RGB color level bars. Select a color or adjust the color level and tap OK to change the color. To return to the palette without changing the color/shade, tap Cancel.

**PEG-T415:** Choose the shade from the displayed 16-step grayscale.

### 4 Tool switch bar

Switches the displayed tool icons with the three boxes on the bar.





### 5 Tool icons

Shows the tools to draw shapes, patterns and letters.










For details on how to use each tool, see page 37.

## Painting with the tools

- 1 On the edit screen, tap the box on the Tool switch bar until the tool of your choice is displayed.
- 2 Tap a palette tab to select a color/shade.
- 3 Tap to select the tool icon and draw on the image or the white background.
  -  **Pen tool:** Creates a free-hand line in the selected color/shade.
  -  **Eraser tool:** Erases an object drawn with a tool (pen, line, ellipse, rectangle, rounded rectangle, letter, stamp, spray, blur, mosaïque).





### Note

You cannot erase details of the original image file. You also cannot erase the performed edits once it is saved.

-  **Color sampler tool:** Samples a color/shade from the original image file to the color palette.
-  **Scroll tool:** Scrolls the image when you are editing a 320 × 320 image.
-  **Line tool:** Creates straight lines in the selected color/shade.
-  **Ellipse tool (no fill/ solid fill):** Creates ellipses in the selected color/shade.
-   **Rectangle tool (no fill/ solid fill):** Creates rectangles in the selected color/shade.
-   **Rounded rectangle tool (no fill/ solid fill):** Creates rectangles with round-corners in the selected color/shade.
-  **Letter tool:** Select to draw letters on the image using the onscreen keyboard or Graffiti® writing.  
After you enter the letters and tap OK, the entered letters are displayed with a dotted border around it. In this state, you can drag it with the stylus and change its location on the image. Tap anywhere outside the dotted border to place it.

Continued on next page

## Drawing with CLIÉ Paint

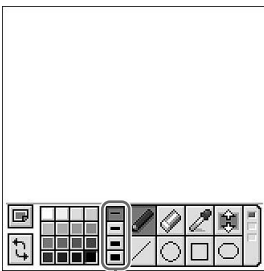
-  **Pattern stamp tool:** Lets you stamp various patterns on the image.  
After you tap to select the pattern, the selected pattern is displayed with a dotted border around it. While it is boxed, you can drag it with the stylus and change its location on the image. Tap anywhere outside the dotted border to place it.
-  **Spray tool:** Gives a sprayed effect in the selected color/shade.
-  **Blur tool:** Gives a blurred, soft-focus effect where you trace with the stylus.
-  **Mosaïque tool:** Gives a mosaïque effect where you select with the stylus.

### Changing the stroke width, letter size, or spray size

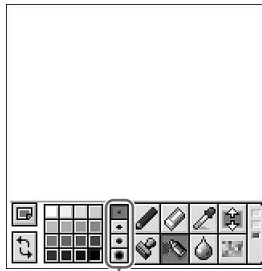
Tap to select one of the four stroke icons or spray size icons.

With the stroke icon, you can change the stroke width for the following tools: pen, eraser, line, ellipse (no fill), rectangle (no fill), rounded rectangle (no fill), and blur. You can also change the letter size for the letter tool with the stroke icons.

The spray size icon changes the spray size for the spray tool.




Stroke icons



Spray size icons

# Saving edited images


## Saving edited image files on your CLIÉ handheld

- 1** When you finish the editing, tap  to save the file.  
The Menu dialog box appears.
- 2** Tap **Over-write** or **Save As**.
  - **Over-write:** Over-writes the former image with the edited one. The former image will not remain on memory once overwritten.
  - **Save As:** Saves the edited image under a new name (the image before editing will remain on memory). You must enter a new name for the edited image.
- 3** Tap **OK**.  
The edited image file is converted to the PGP format and is saved on the CLIÉ handheld.

### Note

- Files processed in monochrome models (e.g. PEG-T415) are saved as a monochrome image even if the original image file is in color.
- The edited images will not be saved on a Memory Stick media.

### To quit the CLIÉ Paint application without saving the image

- 1** Tap any application button or Home .  
If the edited image is not saved, a confirm dialog box appears.
- 2** Tap **OK**.  
The application switches and the edited image will not be saved. To return to the CLIÉ Paint application edit screen, tap **Cancel**.

# How to read the online manual

Detailed information on the CLIÉ Paint application is provided in the online manual in the supplied CD-ROM.

To view the online manual, the Adobe Acrobat Reader version 4.0 or higher must be installed on your computer.

- 1** Insert the supplied CD-ROM in your computer's CD-ROM drive.

The install screen appears automatically.

- 2** Select the model of your CLIÉ handheld (PEG-T615C or PEG-T415).

- 3** Click Manuals.

- 4** Double-click CLIÉ Paint Manual.pdf.

The online manual appears.

## If the Acrobat Reader software is not installed/updated

- 1** Insert the supplied CD-ROM in your computer's CD-ROM drive.

The install screen appears automatically.

- 2** Click Exit.

- 3** Double-click the My Computer icon on the Windows desktop.

- 4** Right-click the CD-ROM drive icon, then click Open from the shortcut menu.

- 5** Double-click the PC folder.

- 6** Double-click the Acrobat folder.

- 7** Double-click ar500enu.exe to install the Acrobat Reader onto your computer.



---

# ***Chapter 3***

---

## ***Playing a movie (gMovie player)***

This chapter describes how to play a movie on your CLÍÉ handheld.

---

## What you can do with gMovie player

gMovie is an application which allows you to display or play back movie file created with Windows® applications such as PictureGear 4.4Lite, on your CLIÉ handheld.

### **Playing movies on your CLIÉ handheld**

You can play a movie that has been converted to the proper format and then transferred from your computer, or stored in the Memory Stick media. You can enjoy your favorite movies anytime, anywhere.

---

# Installing

**You do not have to install gMovie player on your CLIE handheld**  
The gMovie player is factory pre-installed.

## Install PictureGear 4.4Lite software on your computer

Install PictureGear 4.4Lite software on your computer according to the instructions on page 11.

# Playing movies with your CLIÉ handheld

You can transfer to your CLIÉ handheld movies that are shot by a digital still camera or downloaded from the Internet, etc., and that are managed by the PictureGear 4.4Lite software on your computer. You will need to optimize the movies on your CLIÉ handheld by the PictureGear 4.4Lite software before transferring the movies.

For details on operations, or on how to save the movies in the format supported by the PictureGear 4.4Lite software, refer to the online Help of the PictureGear 4.4Lite software.

## Transferring movies to your CLIÉ handheld

Prepare and format the items you want to display on your CLIÉ handheld with PictureGear 4.4Lite software, and then transfer them to your CLIÉ handheld.

**1** Start PictureGear 4.4Lite software.

See page 11 for details.

**2** Select the movie you want to send.

You can also select multiple movies by holding down the Ctrl or Shift keys while clicking.

**3** From the File menu, select Output services and then Install the image during the next HotSync.

The User name dialog box appears.

**4** Click the arrow ▼ to the right of the text box, and then select a user name.

If necessary, click Movie settings and set the size and compression for the image you want to send in the “Settings for Movies on CLIÉ Handheld” dialog box.

**5** Click OK.

The images you want to send and the user name are registered in the PictureGear software.

**6** Place your CLIÉ handheld on the cradle, and then press the HotSync button on the cradle.

The registered images are automatically sent to your CLIÉ handheld during the HotSync operation.

## To save a movie to the Memory Stick media

You can also transfer movie files directly to a Memory Stick media. Install the MS Export software on your computer beforehand (page 93).

- 1** Connect the cradle to a computer in which you have installed the MS Export software.
- 2** Insert a Memory Stick media in your CLIE handheld.
- 3** Place your CLIE handheld on the cradle.
- 4** On the Application Launcher screen of your CLIE handheld, rotate the Jog Dial navigator to select MS Import and press the Jog Dial navigator.  
Or, tap the MS Import icon on the Application Launcher screen. The MS Import application starts.
- 5** Start the PictureGear 4.4Lite software on your computer.
- 6** Select the desired movie on the PictureGear 4.4Lite software.
- 7** From the File menu on the same screen, click Output services, then select "Output CLIE Handheld format file to MemoryStick."  
The "Output CLIE Handheld format file to MemoryStick" dialog box appears.
- 8** From the list next to Save into drive, select the Memory Stick drive.
- 9** Click OK.

## Playing movies with your CLIE handheld

### Playing movies

- 1 On the Application Launcher screen, rotate the Jog Dial navigator to select gMovie and then press the Jog Dial navigator.  
Or, tap the gMovie icon on the Application Launcher screen.




The gMovie player starts and the movie list screen appears.

- 2 Tap the movie you want to play.  
Playback starts.




#### To stop playback


Tap  (Stop).

To resume playback, tap  (Play).


#### To locate the starting point of the movie

Tap  (Locate).


### To return to the movie list screen


Tap  (Return) at the upper-right corner of the screen.


### To play the next movie

Tap  (Next) at the upper-right corner of the screen.


### To play movies one after another (continuous playback)

Tap and hold  (Next) at the upper-right corner of the screen for a few seconds.

The icon changes into  (Continuous) and movies stored in your CLIE handheld are played one after another.

To return to the normal playback, tap and hold  (Continuous) for a few seconds.

### To delete a movie

- 1** Display the movie you want to delete, and then tap Menu .
- 2** Tap Delete.
- 3** Tap OK.

The selected movie is deleted, and then the movie list screen appears.

---

## Playing sample movie files

You can view sample movie files installed on your computer.

Install the Palm Desktop for CLIÉ software to your hard disk using the supplied CD-ROM and then place your CLIÉ handheld on the cradle.

**1** Double-click the Palm Desktop for CLIÉ icon on the Windows desktop.

The Palm Desktop for CLIÉ software starts.

**2** Click Install.

The Install Tool dialog box appears.

**3** Select a user name from the user list.

**4** Click Add.

Make sure that the Add-on folder is selected.

If the Add-on folder is not selected, select the folder manually.

At the default setup, Add-on folder is stored in the Sony Handheld folder of the Program Files folder.

**5** Double-click the gMovie Samples folder.

**6** Double-click the sample movie file you want to play on the screen of your CLIÉ handheld.

The selected movie file name is added to the File Name list.

If you want to view other sample movies, repeat this step.

**7** Click Done.

**8** Press the HotSync button on the cradle.

The selected sample movie files will be installed on your CLIÉ handheld.

**9** Start gMovie player.

For details, see page 46.



# How to read the online manual

Detailed information on gMovie player is provided in the online manual on the supplied CD-ROM.

To view the online manual, the Adobe Acrobat Reader version 4.0 or higher must be installed on your computer.

- 1** Insert the supplied CD-ROM in your computer's CD-ROM drive.

The install screen appears automatically.

- 2** Select the model of your CLIÉ handheld (PEG-T615C or PEG-T415).

- 3** Click Manuals.

- 4** Double-click gMovie Manual.pdf.

The online manual appears.

## If the Acrobat Reader software is not installed/updated

- 1** Insert the supplied CD-ROM in your computer's CD-ROM drive.

The install screen appears automatically.

- 2** Click Exit.

- 3** Double-click the My Computer icon on the Windows desktop.

- 4** Right-click the CD-ROM drive icon, then click Open from the shortcut menu.

- 5** Double-click the PC folder.

- 6** Double-click the Acrobat folder.

- 7** Double-click ar500enu.exe to install the Acrobat Reader onto your computer.

# gMovie menu items

The following items appear when you tap the MENU icon on your CLIÉ handheld screen.

This section describes the menu commands specific to gMovie player.

## Media list screen

### Media menu

#### About gMovie

Shows version information of the gMovie application.

## Movie file screen

### Media menu

#### Details

Shows detailed information of the current media.

#### Beam Media

Transfers the data contained in the current media to another CLIÉ handheld via the IR port. For details about beaming, see the Operating Instructions manual supplied with the CLIÉ handheld.

#### Delete

Deletes the current media. Tap OK in the Delete Media dialog box to perform deletion. Tap Cancel to cancel deletion.

#### Preferences

Displays the available options for movie playback:

- **Loop movie playback:** If you want to play the current movie file repeatedly, tap to select this check box.  
When this check box is cleared, movies will no longer play continuously.

#### About gMovie

Shows version information of the gMovie application.

---

# ***Chapter 4***

---

## ***Viewing the World Alarm Clock (World Alarm Clock)***

This chapter describes how to use your CLIÉ handheld as an alarm clock showing the world time and date.

---

# What you can do with World Alarm Clock

The World Alarm Clock is an application that you can install on your CLIÉ handheld and that provides you with an additional clock, which can give you the local time, the time around the world, and also work as an alarm clock.

## **As a clock showing local time**

You can view the present local time on your World Alarm Clock application, and also set the clock to show Daylight Saving Time.

## **As a world clock showing the time around the world**

In addition to the local time of your area, you can also view on your World Alarm Clock application the local time of up to three other areas of your choice around the world in a single time line, and the date of each area. The world clock time line enables you to see whether you are ahead or behind of a certain area in time and date, and can thus help you in communicating with your business partners worldwide.

## **As an alarm clock capable of a variety of sounds**

You can set several alarms on your World Alarm Clock application (in a variety of patterns, e.g. vibrator, LED ) for a certain time or day of the week. The tone for the alarm can be selected from among the sound files you have installed on your CLIÉ handheld or from the preinstalled sound files.

# Installing

You can install the World Alarm Clock application via your computer's hard disk.

Place your CLIÉ handheld on the cradle, and then install the Palm Desktop for CLIÉ software on your computer from the supplied CD-ROM.

- 1** Double-click the Palm Desktop for CLIÉ icon on the Windows desktop.

The Palm Desktop for CLIÉ software starts.

- 2** Click Install.

The Install Tool dialog box appears.

- 3** Select a user name from the user list.

- 4** Click Add.

Make sure that the Add-on folder is selected.

If the Add-on folder is not selected, select it manually.

At the default setup, the Add-on folder is stored in the Sony Handheld folder of the Program Files folder.

- 5** Double-click the WAC folder.

- 6** Double-click WAC\_enUS.prc.

WAC\_enUS.prc is added to the File Name list.

- 7** Click Done.

- 8** Press the HotSync button on the cradle.

The file specified in step 6 is installed on your CLIÉ handheld during the HotSync operation.

# Using the World Alarm Clock

## Viewing world time

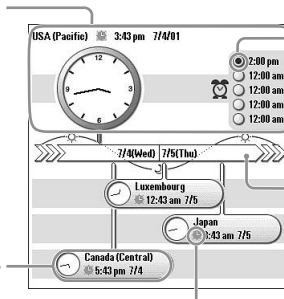
- 1 On the Application Launcher screen, rotate the Jog Dial™ navigator to select WA Clock and then press the Jog Dial navigator. Or, tap the WA Clock icon on the Application Launcher screen.




The World Alarm Clock application starts and the clock screen is displayed.

## Elements of the clock screen

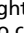
The clock with the time and date of your present time zone (all of which you set for your CLIE handheld)



Set Alarm  icon: If an alarm is set, the icon will be marked black.

Time line with the date

The clock for different time zones  
(To select the time zones you wish to view here, see “Selecting other time zones to be displayed” on page 55.)

Daylight Saving Time  icon:  
Tap to change the indicated time to daylight saving time (the color or shade of the icon changes). Tap again to return to former indication.

### Note

The World Alarm Clock application displays the time according to the time setting for the CLIE handheld. Make sure you set the correct date and time in the CLIE handheld's Date & Time Preferences screen. For details, refer to Chapter 5 of the Operating Instructions manual.

## Selecting other time zones to be displayed

You can select up to three areas to be displayed other than your present location. The time and date for these other areas will be displayed on the lower half of the clock screen.

- 1 On the clock screen, tap the area name (the default setting is "USA (Pacific)") for the smaller clock on the lower half of the screen.

The Set Time Zone screen appears.

- 2 Tap to select the time zone, and tap OK.



## Previewing the future time and date

You can preview the time and date ahead of the present time with the Jog Dial navigator. Rotate the Jog Dial navigator to preview the future time for all time zones in 15 minute units.

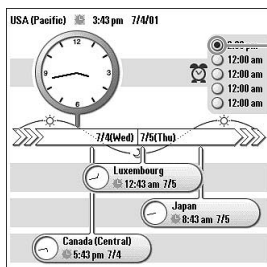
To return to the present time view, wait ten seconds or press the BACK button.

## Setting the clock alarm

You can set up to five alarms. To set an alarm for other days or days of the week, set an alarm within the Date Book. See "Editing Date Book events" in the Operating Instructions manual for details.

- 1 On the clock screen, tap the Set Alarm  icon next to the Alarm  mark.

The Set Alarm screen appears. If you already have an alarm set on the selected number, the Set Alarm screen for the last set alarm will be displayed.



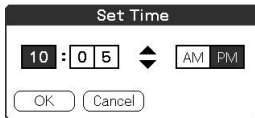
Set Alarm  icon

Continued on next page

## Using the World Alarm Clock

- 2 Tap the arrow ▼ next to Off, and select On.
- 3 On the Comment line, enter a note that you would like to attach to the alarm.
- 4 Tap the Time box.

The Set Time screen appears.



- 5 Set the time.
  - ① Tap the hour box and tap the arrow ▲ or ▼ to set the hour.
  - ② Tap the minute box and tap the arrow ▲ or ▼ to set the minute.
  - ③ Tap to select AM or PM.
- 6 Tap OK.

The display returns to the Set Alarm screen.
- 7 Tap the numbered/lettered box to set a one-time or repeating alarm.
  - **1**: Sets a one-time alarm.
  - **E**: Sets a daily repeating alarm.
  - **S, M, T, W, T, F, S**: Sets a weekly repeating alarm. You can select more than one day of the week.

### 8 Set the alarm type.

- ① Tap the check boxes to select the type of alarm from Sound, Vibration, or LED.

A combination of two or all three will work as well.
- ② If you selected Sound in ①: Select the tone of the alarm. Tap the arrow ▼ beneath the Sound check box to select from the drop-down list.

#### Tip

If you import a tone of your choice to your CLIÉ handheld using the Sound Converter software, they will appear here in the drop-down list.



- ③ If you selected Sound in ①: Select the way you want the alarm to sound.
- **Crescendo:** Tap the check box to select this if you want the alarm to increase its volume while it sounds.
  - **Duration:** Tap the arrow ▼ next to this item to select the length of time the alarm will go on when left alone. The choices are 5, 10, 15, 30 or 45 seconds.

### Notes

- If the alarm volume is low, Crescendo may not function.
- Be sure to set the time length in Duration so that it is more than twice the length of the sound file, or else Crescendo will not function.

## 9 Select the repeating options.

- **Remind Me:** Select how many times the alarm repeats itself. The choices are Once, Twice, 3 Times, 5 Times, or 10 Times.
- **Play Every:** Select how often the alarm repeats itself. The choices of interval are 1, 3, 5, 10, 15, 20, or 30 minutes.

## 10 Tap OK.

The display returns to the clock screen.

The Set Alarm  icon for the active alarms will be marked black (  ).

## Changing the alarm setting

### 1 On the clock screen, tap the Set Alarm icon of the alarm you wish to change.

The Set Alarm screen for that alarm appears.

### 2 Make the changes in the Set Alarm screen.

### 3 Tap OK.


#### Tip

To clear the set setting, tap Default in the Set Alarm screen. The setting for that alarm number will return to the default setting.


## Using the World Alarm Clock

### Canceling a set alarm

You can deactivate an alarm without deleting its setting.

- 1** On the clock screen, tap the Set Alarm  icon of the alarm you wish to cancel.

The Set Alarm screen for that alarm appears.

- 2** Tap the arrow  next to On, and select Off from the drop-down list.

The alarm will be deactivated while the setting remains.

The deactivated alarms will have no black dots in their circle.

#### Note

If you select Off for Alarm Sound/Vibrate Alarm/LED Alarm in the General Preferences screen, the sound/vibration/LED of the alarm will be deactivated even if you have selected Alarm On here.

## Stopping the alarm

When the alarm goes off, a dialog screen appears.

To turn off the alarm and close the screen, tap OK. To have the alarm stop and go off again after a few minutes, tap Snooze.

### If you do not turn off the alarm

The alarm goes off again according to what you set for Remind Me in step 9 on page 57.

### If you tap Snooze

An alarm goes off approximately every 5 minutes until you stop the alarm.

# How to read the online manual

Detailed information on the World Alarm Clock application is provided in the online manual of the software on the supplied CD-ROM.

To view the World Alarm Clock online manual, the Adobe Acrobat Reader version 4.0 or higher must be installed on your computer.

- 1** Insert the supplied CD-ROM in your computer's CD-ROM drive.  
The install screen appears automatically.
- 2** Select the model of your CLIÉ handheld (PEG-T615C or PEG-T415).
- 3** Click Manuals.
- 4** Double-click World Alarm Clock Manual.pdf.  
The online manual appears.

## If the Acrobat Reader software is not installed/updated

- 1** Insert the supplied CD-ROM in your computer's CD-ROM drive.  
The install screen appears automatically.
- 2** Click Exit.
- 3** Double-click the My Computer icon on the Windows desktop.
- 4** Right-click the CD-ROM drive icon, then click Open from the shortcut menu.
- 5** Double-click the PC folder.
- 6** Double-click the Acrobat folder.
- 7** Double-click ar500enu.exe to install the Acrobat Reader onto your computer.

# World Alarm Clock menu items

---

The following item appears when you tap the MENU icon.

This section describes the menu command specific to World Alarm Clock application.

## Options menu

### Day Color

Set a different color for each day of the week.

The color is displayed in monochrome for monochrome models.

### About World Alarm Clock

Shows the version information of World Alarm Clock application.

---

# ***Chapter 5***

---

## ***Using your CLIÉ handheld as a remote commander (CLIÉ Remote Commander)***

This chapter describes how to use your CLIÉ handheld as a remote commander to control various devices.

---

# What you can do with CLIÉ Remote Commander

The CLIÉ Remote Commander is an application you can install on your CLIÉ handheld to enable the CLIÉ handheld to function as a remote commander.

## **A single remote control for multiple devices**

You can control a variety of remote-controlled devices (e.g. TV, VCR, DVD player) with a single CLIÉ handheld, switching among them with a tap on the quick-start buttons.

## **Customizable to suit your needs**

If the four quick-start buttons are not enough to suit your needs, you can always set more devices and select them from the Select menu.

## **You don't even need to look at the screen...**

You can assign operations to the Jog Dial™ navigator or to the application buttons on the front panel. For example, if you assign "increase volume" of a certain device to the upward rotation of the Jog Dial navigator, you can always change the volume of that device in that way without switching the control screen.

# Installing

You can install the CLIÉ Remote Commander application via your computer's hard disk. Before installation, be sure to have the Palm Desktop for CLIÉ software installed on your computer, and have the CLIÉ handheld seated correctly in the cradle.

**1** Double-click the Palm Desktop for CLIÉ icon on the Windows desktop.

The Palm Desktop for CLIÉ software starts.

**2** Click Install.

The Install Tool dialog box appears.

**3** Select a user name from the user list.

**4** Click Add.

Make sure that the Add-on folder is selected.

If the Add-on folder is not selected, select it manually.

At the default setup, the Add-on folder is stored in the Sony Handheld folder of the Program Files folder.

**5** Double-click the RMC folder.

**6** Double-click the following folder.

- For PEG-T615C: Color folder
- For PEG-T415: Mono folder

**7** Double-click the following file.

- For PEG-T615C: CLIÉ\_RMC.prc
- For PEG-T415: CLIÉ\_RMC\_m.prc

The selected file is added to the File Name list.

**8** Repeat steps 4 to 6, and double-click the necessary files with the name "-def.prc" (e.g. TVdef.prc) for PEG-T615C, or "-def\_m.prc" (e.g. TVdef\_m.prc) for PEG-T415.

The files are added to the File Name list.

**9** Click Done.

**10** Press the HotSync button on the cradle.

Files specified in steps 7 and 8 are installed on your CLIÉ handheld during the HotSync operation.

**Note**

The CLIÉ Remote Commander application does not start unless the "-def.prc" applications are installed on your CLIÉ handheld.

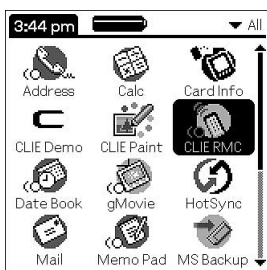
# Preparing the CLIÉ Remote Commander for your use

## Assigning devices to the CLIÉ Remote Commander

### Note

To check whether the manufacturer of your remote-controlled device is supported by the CLIÉ Remote Commander application, refer to the “Appendix” on page 102.

- 1 On the Application Launcher screen, rotate the Jog Dial™ navigator to select CLIÉ RMC and press the Jog Dial navigator. Or, tap the CLIÉ RMC icon on the Application Launcher screen.



The CLIÉ Remote Commander application starts and a list of the pre-assigned device is displayed.

No.	Name	Button
1)	VCR (Sony)	
2)	TV (Sony)	
3)	DVD (Sony)	
4)	AV-AMP (Sony)	

New

- 2 Tap New.

The New Entry screen is displayed.



- 3 Tap the arrow ▼ next to the following items and select the appropriate settings for your device(s).
  - **Category:** Select the device you want to remote-control. Select from TV, VCR, DVD, AV-AMP (amplifier).
  - **Maker:** Select the manufacturing company of the remote-controlled device from the drop-down list.
  - **Mode:** Select the remote control mode from the drop-down list (different models may require a different mode in order to operate).
  - **Button:** Select which quick-start button you wish to assign the device to. Choose the letter from the drop-down list, or select none.
- 4 Point the IR port of the CLIÉ handheld toward the device you want to remote-control and tap Test (power on/off). If the device does not respond to the CLIÉ Remote Commander, select a different mode type in step 3.
- 5 In the Name box, enter a name for this remote control setting (e.g. VCR in the den).
- 6 Tap OK.  
A confirm dialog box appears.
- 7 Tap OK.  
The remote control setting is assigned to the selected quick-start button, and the control screen for the assigned device appears.



Example of the VCR remote


- 8 To assign more devices to the other quick-start buttons, tap Select on the control screen and repeat steps 2 to 7.

#### Note

Even if the manufacturer of the device is listed on the supported manufacturer list on page 102, some devices cannot be remote-controlled depending on its model or the year of its production.

## Preparing the CLIÉ remote commander for your use

### Changing the remote control setting

- 1 Tap Menu  on the control screen of the device of which you want to change the remote control settings.
- 2 Tap Detail from the Options menu.

The Detail screen appears.



- 3 Make changes as necessary and tap OK.  
The CLIÉ RMC dialog box appears.
- 4 Tap OK.  
The new remote control setting is set, and the control screen for the assigned device appears.

### Deleting a remote control setting

Tap Delete in step 2 of “Changing the remote control setting” and tap OK.

## Assigning operations to the application buttons and Jog Dial navigator

You can assign operations to the Jog Dial™ navigator or to the application buttons on the front panel. This is convenient for those operations you perform most (e.g. adjusting the TV volume), since you do not even have to take out the stylus to operate.

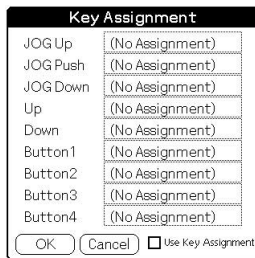
- 1 On the Application Launcher screen, rotate the Jog Dial™ navigator to select CLIÉ RMC and then press the Jog Dial navigator. Or, tap the CLIÉ RMC icon on the Application Launcher screen.

CLIÉ Remote Commander starts and the control screen of the last used device is displayed.

- 2 Tap Menu .

- 3 Tap Key Assignment from the Options menu.

The Key Assignment screen appears.



Key Assignment	
JOG Up	(No Assignment)
JOG Push	(No Assignment)
JOG Down	(No Assignment)
Up	(No Assignment)
Down	(No Assignment)
Button1	(No Assignment)
Button2	(No Assignment)
Button3	(No Assignment)
Button4	(No Assignment)
<input type="button" value="OK"/> <input type="button" value="Cancel"/> <input type="checkbox"/> Use Key Assignment	

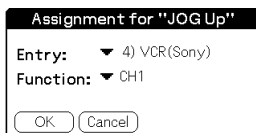
- 4 If the check box for Use Key Assignment at the bottom right corner is not selected, tap to select it.

If the check box is unmarked, application buttons and Jog Dial navigator cannot be used in the CLIÉ Remote Commander application even if operations are assigned to them.

## Preparing the CLIÉ remote commander for your use

- 5 Tap the box next to each assignable button (e.g. JOG Up).

The Key Assignment dialog box for each button appears.



- 6 Tap the arrow ▼ next to Entry, and select the name of the remote control setting you wish to assign to the key.
- 7 Tap the arrow ▼ next to Function, and select the operation you want to assign to that button.
- 8 Tap OK.
- 9 Repeat steps 3 to 8 until you have finished setting all the functions that you want.
- 10 Tap OK on the Key Assignment screen.

# Using the CLIÉ handheld as a remote commander

You can operate a remote-controlled device on the device's control screen. For those operations you have assigned to the Jog Dial™ navigator or to the application buttons, see page 67.

## Notes

- Be sure to point the IR port of your CLIÉ handheld toward the device that you wish to remote-control.
- The reach of the remote-control signal is approximately 5 meters, but it may vary depending on the receiving device or on the environment.

## Remote-controlling a device

### Operating a device from the control screen

- 1** On the Application Launcher screen, rotate the Jog Dial™ navigator to select CLIÉ RMC and press the Jog Dial navigator. Or, tap the CLIÉ RMC icon on the Application Launcher screen.

CLIÉ Remote Commander application starts and control screen for the last used device appears.

## Note

If the setting for the last used device has been deleted, the Select Control screen appears.

- 2** Perform either of the following to switch to the control screen of the device you are about to remote-control.
  - For devices assigned to a quick-start button:  
Tap the quick-start button to which it is assigned.
  - For devices unassigned to a quick-start button:  
Tap Select, then tap to select the name of the remote control setting from the list.

The control screen for the selected device appears.

- 3** Tap the onscreen buttons to remote-control the device.

## Using the CLIÉ handheld as a remote commander

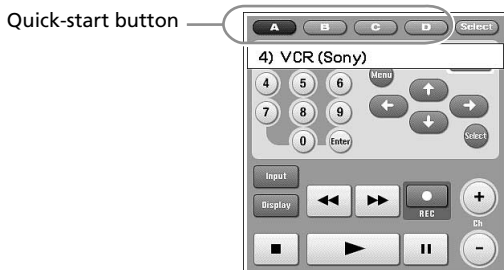
### Operating devices directly with the Jog Dial navigator or the application button

Follow the steps below to perform the assigned operation from the Jog Dial navigator or the application buttons.

- 1 Start CLIÉ Remote Commander.
- 2 Use the Jog Dial navigator or the application buttons to remote-control the device.

### Viewing the device name assigned to each quick-start button

Tap a quick-start button and hold for over two seconds. The name of the device assigned to each quick-start button is displayed.



---

# How to read the online manual

Detailed information on the CLIÉ Remote Commander application is provided in the online manual of the application on the supplied CD-ROM.

To view the CLIÉ Remote Commander online manual, the Adobe Acrobat Reader version 4.0 or higher must be installed on your computer.

- 1** Insert the supplied CD-ROM in your computer's CD-ROM drive.  
The install screen appears automatically.
- 2** Select the model of your CLIÉ handheld (PEG-T615C or PEG-T415).
- 3** Click Manuals.
- 4** Double-click CLIÉ Remote Commander Manual.pdf.  
The online manual appears.

## If the Acrobat Reader software is not installed/updated

- 1** Insert the supplied CD-ROM in your computer's CD-ROM drive.  
The install screen appears automatically.
- 2** Click Exit.
- 3** Double-click the My Computer icon on the Windows desktop.
- 4** Right-click the CD-ROM drive icon, then click Open from the shortcut menu.
- 5** Double-click the PC folder.
- 6** Double-click the Acrobat folder.
- 7** Double-click ar500enu.exe to install the Acrobat Reader onto your computer.

# CLIÉ Remote Commander menu items

---

The following items appear when you tap the MENU icon.

This section describes the menu commands specific to the CLIÉ Remote Commander application. For the Edit menu, see “Using the edit menu” in the Operating Instructions manual.

## Options menu

### **Detail**

Shows the remote control setting for the displayed control screen.

### **Key Assignment**

The Key Assign screen appears. You can assign operations to the application buttons and the Jog Dial navigator.

### **About CLIÉ RMC**

Shows the version information of the CLIÉ Remote Commander application.



---

# ***Chapter 6***

---

## ***Importing your favorite sounds (Sound Utility/Sound Converter)***

This chapter describes how to import sound data from your computer to your CLiÉ handheld.

---

## What you can do with Sound Converter/ Sound Utility

The Sound Converter software converts “WAVE format” or “Standard MIDI File Format 0” sound data on your computer to sound data compatible with the format used by your CLIÉ handheld. The Sound Utility application then enables you to play those converted data on your CLIÉ handheld.

### **Playing sound data on your CLIÉ handheld**

Using the Sound Utility application, you can play a sound data that has been transferred from your computer and converted to the CLIÉ handheld compatible format.

### **Set your favorite sound data as an alarm sound**

You can set an imported sound data as an alarm sound on the Date book and on the World Alarm Clock applications.

**WAVE formats compatible with  
Sound Converter are as follows:**

fs = 8 kHz, 16 bit, stereo

fs = 8 kHz, 16 bit, monaural

fs = 8 kHz, 8 bit, stereo

fs = 8 kHz, 8 bit, monaural

fs = 22 kHz, 16 bit, stereo

fs = 22 kHz, 16 bit, monaural

fs = 22 kHz, 8 bit, stereo

fs = 22 kHz, 8 bit, monaural

# Installing

You must install the Sound Utility application on your CLIÉ handheld and the Sound Converter software on your computer to use the functions described in this chapter.

## Installing the Sound Utility application on your CLIÉ handheld

You can install the Sound Utility application via your computer's hard disk. Place your CLIÉ handheld on the cradle, then install the Palm Desktop for CLIÉ software on your computer from the supplied CD-ROM.

- 1** Double-click the Palm Desktop for CLIÉ icon on the Windows desktop.

The Palm Desktop for CLIÉ software starts.

- 2** Click Install.

The Install Tool dialog box appears.

- 3** Select a user name from the user list.

- 4** Click Add.

Make sure that the Add-on folder is selected.

If the Add-on folder is not selected, select it manually.

At the default setup, the Add-on folder is stored in the Sony Handheld folder of the Program Files folder.

- 5** Double-click the Sound Utility folder.

- 6** Double-click SoundUtility\_enUS.prc.

SoundUtility\_enUS.prc is added to the File Name list.

- 7** Click Done.

- 8** Press the HotSync button on the cradle.

The file specified in step 6 is installed on your CLIÉ handheld during the HotSync operation.

## Installing

### Installing the Sound Converter software on your computer

Install the Sound Converter software on your computer using the supplied Installation CD-ROM.

- 1** Insert the Installation CD-ROM to your computer's CD-ROM drive.  
The installation launcher window appears.
- 2** Select the model of your CLIÉ handheld (PEG-T615C or PEG-T415).
- 3** Click Install CLIÉ Utilities.  
The CLIÉ Utilities window appears.
- 4** Click Install Sound Converter.  
The software installation starts. Follow the onscreen instructions to finish the installation.
- 5** Click Finish.

#### To start Sound Converter

From the Start menu, click Programs (All Programs in Windows® XP), Sound Converter, and Sound Converter.

For details on how to use the Sound Converter software, see the Help files of the Sound Converter software.

# Storing sound data in your CLIÉ handheld

Using the Sound Converter software, you can convert “WAVE format” and “Standard MIDI File Format 0” sound data on your computer. Converted data can be transferred to your CLIÉ handheld via a HotSync operation.

## Transferring sound data to your CLIÉ handheld

On your computer, prepare sound data to be played back on your CLIÉ handheld, then transfer them to your CLIÉ handheld.

### 1 Start Sound Converter.

See page 76 for details.

### 2 Select the sound data to be transferred to your CLIÉ handheld.

① Click the Add button.

The Open dialog box appears.

② Select the desired sound data from your computer’s drive, then click Open.

You can also add files by dragging and dropping the desired files directly to the Sound Converter window.

The files are added to the file list.

### 3 Click the Install button.

The Start Installation dialog box appears.

### 4 Select the User name of your CLIÉ handheld.

The registered sound data are automatically transferred to your CLIÉ handheld during the HotSync operation.

### 5 Click the Execute button.

The Installation Complete dialog box appears, and the data are set to be installed in the next HotSync operation.

### 6 Click OK.

### 7 Press the HotSync button on the cradle.

The selected sound data are installed on your CLIÉ handheld.

#### Note

If the converted sound data size exceeds approximately 64 KB, the exceeding part is deleted.

## Storing sound data in your CLIÉ handheld

### Setting an imported sound data as an alarm sound

You can set your favorite sound as an alarm sound with the Date Book and the World Alarm Clock applications. Imported sound data are automatically registered in the alarm sounds list in addition to the default sounds.

For details on how to change the alarm sound, see “Using the Date Book menus” in the Operating Instructions and “Setting the clock alarm” in this guide (page 55).



Date book



World Alarm Clock

# Managing sound data

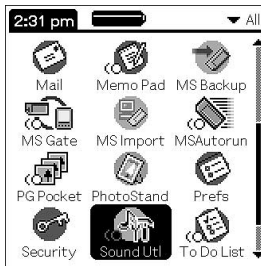
You can manage the imported sound data using the Sound Utility application on your CLIÉ handheld.

## Playing sound data on your CLIÉ handheld

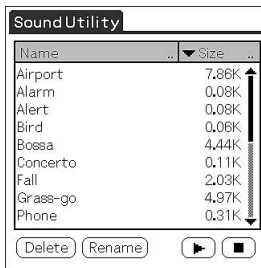
You can play transferred sound data using the Sound Utility application.


- 1 On the Application Launcher screen, rotate the Jog Dial™ navigator to select Sound Utl and then press the Jog Dial navigator.

Or, tap the Sound Utl icon on the Application Launcher screen.



Sound Utility starts and the imported sound data list is displayed.



- 2 Tap the desired sound data in the data list, then tap . Playback starts.

### Note

Select one data per playback. You cannot select two or more data simultaneously.

Continued on next page

## Managing sound data

### To stop playback

Tap .

### If the sound data are hard to hear

Lower the sound level of the original sound data, then transfer the data to your CLIÉ handheld again.

- 1** Delete the sound data (see the following section for details).
- 2** Perform steps 1 to 2 on page 77.
- 3** Click the desired data from the data list.
- 4** From the Edit menu, click Conversion Volume Control.  
The Conversion Volume Control window is displayed.
- 5** Adjust the volume by sliding the volume bar.
- 6** Click OK.
- 7** Perform steps 3 to 7 on page 77.

#### Notes

- It is not guaranteed that all the sound data become easier to hear with the above procedure.
- The tone of MIDI format sound data may sound different when played back on the CLIÉ handheld.

### Note on sound data

The playback sound may be distorted depending on its tone and volume.

## Deleting a sound data

You can delete unnecessary sound data from your CLIÉ handheld.

- 1** From the Sound Utility window, tap the desired sound data in the data list, then tap Delete.  
The Delete Sound Data dialog box appears.
- 2** Tap OK.  
The selected data is deleted, and the data list is updated.

#### Note

All sound data are stored as two sound files (SMF file, PCM file) in your CLIÉ handheld according to the data type. In case you delete the sound data by mistake, it is recommended to back up these two files. For details, see the Operating Instructions manual provided in the supplied CD-ROM.



## Changing the name of a sound data

- 1** From the Sound Utility window, tap the desired sound data in the data list, then tap Rename.  
The Rename Sound Data dialog box appears.
- 2** Type the desired name and tap OK.  
The selected data name is changed, and the data list is updated.

## Sorting the sound data list

You can sort the data list by name, size, playback time, or data type.

### Tip

To sort by the data type, select one of the following:

- SMF: A list of Standard MIDI File Format 0 data is displayed.
- PCM: A list of WAVE format data is displayed. The WAVE format data are stored as PCM (ADPCM) format in your CLIÉ handheld.

### To sort by name

Tap the right end of the Name bar in the data list.

Tapping the right end repeatedly changes over the alphabetical order up and down.

### To sort by size, time, or type

- 1** Tap the Size, Time, or Type bar in the data list, then select the desired category.  
The information on selected category is displayed.
- 2** Tap the right end of the Size, Time, or Type bar.  
Tapping the right end repeatedly changes over the order up and down.

# Sound Utility menu items

---

The following item appears when you tap the MENU icon.

This section describes the menu command specific to the Sound Utility application.

## Options menu

### **About Sound Utility**

Shows the version information of Sound Utility application.

---

# ***Chapter 7***

---

## ***Setting the Memory Stick automatic start function (MS Autorun)***

This chapter describes how to set the Memory Stick automatic start function on your CLIÉ handheld.

If you want to start an application in the Memory Stick media from the Application Launcher screen, refer to the Operating Instructions manual.

# What you can do with MS Autorun

Memory Stick Autorun (hereafter referred to as MS Autorun) is an application which allows your CLIÉ handheld to copy and start a specified application automatically when Memory Stick media is inserted into the CLIÉ handheld. Removing the Memory Stick media automatically deletes the application copy from the memory of the CLIÉ handheld. MS Autorun functions as a virtual memory to effectively utilize the memory of the CLIÉ handheld.

## **Starting an application (.prc) on the CLIÉ handheld automatically**

If you use a digital still camera that is compatible with Memory Stick media, you can view your images by inserting the Memory Stick media into the CLIÉ handheld. In such a case, you would use the auto-run setting to start the PictureGear Pocket application on your CLIÉ handheld.

## **Starting an application (.prc) in a Memory Stick media automatically**

This setting is for automatically starting an application which does not access any data, such as game applications, or an application which accesses data in the CLIÉ handheld (not in the Memory Stick media).

## **Starting a pre-selected application (.prc) and related database files (.pdb, .prc) in a Memory Stick media\***

This setting automatically displays a specific image or file with an application such as an image viewer or a document reader. You need to specify an application and the related database files before using this auto-run setting.

## **Starting an application (.prc) on the CLIÉ handheld automatically with specific database files (.pdb, .prc) from a Memory Stick media\***

This setting is used if the application is located on the CLIÉ handheld and the corresponding database files are located on a Memory Stick media. You can also display the desired data automatically by inserting the Memory Stick media into your CLIÉ handheld.

\* If you specify PictureGear Pocket as an auto-run application, tap the arrow ▼ on the top center of the screen in the PictureGear Pocket application to select "MS." Likewise, if you specify gMovie player as an auto-run application, tap the movie file you want to play.

### Notes

- It is not recommended that you use MS Autorun application with the Address Book, Date Book, To Do List, Memo Pad, Calculator or Mail applications. Problems may occur if the data of these applications do not reside on your CLIÉ handheld when you perform a HotSync operation.
- The specified application may not start automatically depending on the application in use when you insert the Memory Stick media into your CLIÉ handheld. In this case, return to the Application Launcher screen, and then reinsert the Memory Stick media.

## You do not have to install MS Autorun on your CLIÉ handheld


The MS Autorun application is factory pre-installed.

# Setting Auto-run for an application

To automatically start an application stored in a Memory Stick media, perform the following procedure.

## Note

This procedure is an example to set the PictureGear Pocket application to start automatically. In this case, a Memory Stick media containing photos must be inserted to the CLIÉ handheld.

- 1** Install an application you want to start automatically (PictureGear Pocket) on the CLIÉ handheld.  
The PictureGear Pocket application is preinstalled in some series of the CLIÉ handheld, including this model.
- 2** Insert the Memory Stick media for which you want to set the auto-run function to into the Memory Stick slot.
- 3** On the Application Launcher screen, rotate the Jog Dial navigator to select MSAutorun and then press the Jog Dial navigator. Or, tap MSAutorun icon on the Application Launcher screen.  
MS Autorun application starts, and the list of applications in your CLIÉ handheld appears.
- 4** Tap the application (PictureGear Pocket) for which you want to set the auto-run function.
- 5** Tap Set.  
The setting is stored in the Memory Stick media, and the confirmation dialog box appears.
- 6** Tap OK.  
The auto-run setting is completed.
- 7** Tap Home  to return to the Application Launcher screen.
- 8** Remove the Memory Stick media.

## To use the auto-run function with this example

If the Application Launcher screen is displayed and you insert Memory Stick media into your CLIE handheld, the PictureGear Pocket application starts automatically. In this case, if you remove the Memory Stick media, the PictureGear Pocket quits automatically and the Application Launcher screen appears. For further information, refer to the online manual for MS Autorun application.

### Note

If “Internal” is displayed at the top center of the PictureGear Pocket screen during operation described above, the image files stored in your CLIE handheld are displayed.

To view image files stored in the Memory Stick media, tap the arrow ▼ on the top center of the screen to select “MS.”

---

# How to read the online manual

Detailed information on the MS Autorun application is provided in the online manual on the supplied CD-ROM.

To view the online manual, the Adobe Acrobat Reader version 4.0 or higher must be installed on your computer.

- 1** Insert the supplied CD-ROM in your computer's CD-ROM drive.

The install screen appears automatically.

- 2** Select the model of your CLIÉ handheld (PEG-T615C or PEG-T415).

- 3** Click Manuals.

- 4** Double-click MSAutorun Manual.pdf.

The online manual appears.

## If the Acrobat Reader software is not installed/updated

- 1** Insert the supplied CD-ROM in your computer's CD-ROM drive.

The install screen appears automatically.

- 2** Click Exit.

- 3** Double-click the My Computer icon on the Windows desktop.

- 4** Right-click the CD-ROM drive icon, then click Open from the shortcut menu.

- 5** Double-click the PC folder.

- 6** Double-click the Acrobat folder.

- 7** Double-click ar500enu.exe to install the Acrobat Reader onto your computer.



# MS Autorun menu items

The following items appear when you tap the MENU icon.

This section describes the menu commands specific to the MS Autorun application.

## Options menu

### Display log

When Memory Stick media is inserted into or removed from your CLIE handheld, a history log is created. From the Options menu, you can view this information by tapping Display log.

### Tools

The following buttons appear in the Tools dialog box:

- **Recover:**  
This button is displayed if the auto-run function is performed and the MS Autorun application is started without removing the Memory Stick media. You can delete the application and database files copied into your CLIE handheld.
- **Delete autorun setting:**  
This button is displayed if the auto-run setting file is stored in the inserted Memory Stick media. You can delete the auto-run setting in the Memory Stick media.

### Preferences

Displays the Preferences dialog box.

The following items appear on this dialog box:

- **Autorun:**  **Disable:**  
You can temporarily cancel the auto-run function.
- **MS List:**  
You can switch the format of the list of data in Memory Stick media.

### About MS Autorun

The version information of the MS Autorun application is displayed.



---

# ***Chapter 8***

---

## ***Copying the data to the Memory Stick media on your CLIÉ handheld (MS Import/Export)***

This chapter describes how to copy the data on your computer to the Memory Stick media on your CLIÉ handheld directly without performing HotSync operation.

---

# What you can do with MS Import/Export

Both Memory Stick (MS) Import and Memory Stick (MS) Export are applications designed to help you copy the data on your computer to the Memory Stick media on your CLIÉ handheld directly without performing a HotSync operation.

## **When copying the data on your computer**

You have to use both the MS Import application for your CLIÉ handheld and the MS Export software for your computer at the same time.

## **Before using the MS Import/Export applications**

The MS Import application is already installed on your CLIÉ handheld, but you have to install the MS Export software to your computer (page 93).

## **Installing CLIÉ applications without performing a HotSync operation**

Using the MS Import/Export applications, you can install application files (.prc or .pdb) for your CLIÉ handheld without performing a HotSync operation.

## **Using your CLIÉ handheld as a removable disk**

The MS Import/Export applications enable you to use the Memory Stick media inserted in your CLIÉ handheld as another removable disk drive on your computer. Like other removable drives, you can copy and move files between your CLIÉ handheld and your computer using the Windows® Explorer.

---

# Installing

You need to install the MS Export software on your computer. (The MS Import application is already installed on your CLIÉ handheld).

- 1** Insert the installation CD-ROM into the CD-ROM drive of your computer.

The setup program starts automatically.

- 2** Select the model of your CLIÉ handheld (PEG-T615C or PEG-T415).

- 3** Click Install CLIÉ Utilities.

- 4** Click Install Memory Stick Export.

The installation starts.

Follow the instructions displayed on the screen.

After the installation is completed, the installation screen reappears.

- 5** Click Finish.

The installation of MS Export software ends.

# Installing CLIÉ applications using MS Import/Export

You can install applications for your CLIÉ handheld into the Memory Stick media without performing HotSync operation, if you use MS Import/Export applications.

- 1** Connect the cradle to a computer in which you have installed the MS Export software.
- 2** Insert the Memory Stick media into your CLIÉ handheld.
- 3** Place your CLIÉ handheld on the cradle.
- 4** On the Application Launcher screen, rotate the Jog Dial navigator to select MS Import and then press the Jog Dial navigator.

The MS Import application starts.

Or, tap the MS Import icon on the Application Launcher screen.

- 5** Drag and drop add-on application files (.prc or .pdb) for your CLIÉ handheld to the MS Export shortcut icon on your Windows desktop.

These files are automatically copied to the appropriate folders.

## **If the application file type could not be recognized by the MS Export**

The Entry Form dialog box appears.

In this case, enter the application name and destination folder to which the application will be copied.

- 6** When you finish, tap Disconnect or tap Home .

### **Note**

Do not remove the Memory Stick media while the cradle is connected to your computer.

## **If your computer is Windows 2000/Windows Me**

A warning message appears when you tap Disconnect on your CLIÉ handheld.

Click OK, and then continue operations.

## Confirming the contents of the Memory Stick media after copying the application

Restart MS Export software, then click the Memory Stick Drive tab of the MS Export software.

### Note

You cannot copy applications by dragging them to the Memory Stick Drive window of the MS Export software.

---

## Using your CLIÉ handheld as a removable disk

- 1** Connect the cradle to a computer in which you have installed the MS Export software.
- 2** Insert the Memory Stick media in your CLIÉ handheld.
- 3** Place your CLIÉ handheld on the cradle.
- 4** On the Application Launcher screen, rotate the Jog Dial navigator to select MS Import and then press the Jog Dial navigator.

MS Import application starts.


Or, tap the MS Import icon on the Application Launcher screen.

- 5** Operate the desired file or data using Windows Explorer, etc.

Not only can you copy or delete data stored in the Memory Stick media, you can also write data in your computer to the Memory Stick media.

### Note

When you copy the application to the PALM/Launcher folder of the Memory Stick media, some applications on your CLIÉ handheld may not display the file list of the Memory Stick media appropriately.

- 6** When you finish the operation, tap Disconnect or tap Home .

### Note

Do not remove the Memory Stick media while the cradle is connected to your computer.

### If your computer is Windows 2000/Windows Me

A warning message appears when you tap Disconnect on your CLIÉ handheld.

Click OK, and then continue with the operations.



---

# How to read the online manual

Detailed information on the MS Import/MS Export software is provided in the online manual on the supplied CD-ROM.

To view the online manual, the Adobe Acrobat Reader version 4.0 or higher must be installed on your computer.

- 1** Insert the supplied CD-ROM in your computer's CD-ROM drive.  
The install screen appears automatically.
- 2** Select the model of your CLIÉ handheld (PEG-T615C or PEG-T415).
- 3** Click Manuals.
- 4** Double-click MS Import Export Manual.pdf.  
The online manual appears.

## If the Acrobat Reader software is not installed/updated

- 1** Insert the supplied CD-ROM in your computer's CD-ROM drive.  
The install screen appears automatically.
- 2** Click Exit.
- 3** Double-click the My Computer icon on the Windows desktop.
- 4** Right-click the CD-ROM drive icon, then click Open from the shortcut menu.
- 5** Double-click the PC folder.
- 6** Double-click the Acrobat folder.
- 7** Double-click ar500enu.exe to install the Acrobat Reader onto your computer.

# MS Import menu items

---

The following item appears when you tap the MENU icon.  
This section describes the menu command specific to the MS Import application.

## Options menu

### **About MS Import**

Shows the version information of the MS Import application.

---

# ***Chapter 9***

---

## ***Additional information***

This chapter includes the index and appendix information.

# Index

## C

- CLiÉ Paint
  - Elements of the edit screen ..... 35
  - Painting with the tools ..... 37
  - Saving edited image files on your CLiÉ handheld ..... 39
  - To work on a PictureGear Pocket image ..... 34
  - To work on a white background ... 34
  - What you can do with CLiÉ Paint .. 32
- CLiÉ Remote Commander
  - Assigning devices to the CLiÉ Remote Commander ..... 64
  - Assigning operations to the application buttons and Jog Dial navigator ..... 67
  - Menu items ..... 72
  - Remote-controlling a device ..... 69
  - Viewing the device name assigned to each quick-start button ..... 70
  - What you can do with the CLiÉ Remote Commander ..... 62

## G

- gMovie player
  - What you can do with gMovie player ..... 42
  - Transferring movies to your CLiÉ handheld ..... 44
  - Playing movies ..... 46
  - Playing sample movie files ..... 48
  - Menu items ..... 50

## I

- Installing
  - CLiÉ Paint ..... 33
  - CLiÉ Remote Commander ..... 63
  - PictureGear 4.4Lite ..... 43
  - Sound Converter ..... 76
  - Sound Utility ..... 75
  - World Alarm Clock ..... 53

## M

- Memory Stick media
  - Viewing image files stored in Memory Stick media ..... 18
  - Saving image files stored on a Memory Stick media to your CLiÉ handheld (Import) ..... 21
  - Saving image files stored on your CLiÉ handheld to a Memory Stick media (Export) ..... 20
  - Setting the Memory Stick automatic start function (MS Autorun) ..... 83
- Menu items
  - CLiÉ Remote Commander ..... 72
  - gMovie ..... 50
  - MS Autorun ..... 89
  - MS Import ..... 98
  - PictureGear Pocket ..... 27
  - Sound Utility ..... 82
  - World Alarm Clock ..... 60
- MS Autorun
  - Setting Auto-run for an Application ..... 86
  - What you can do with MS Autorun 84
- MS Import/Export
  - Installing CLiÉ applications using MS Import/Export ..... 94

Using your CLIÉ handheld as a removable disk .....	96
What you can do with MS Import/Export .....	92
Menu items .....	98

## O

Online manual	
CLIÉ Paint .....	40
CLIÉ Remote Commander .....	71
gMovie .....	49
MS Autorun .....	88
MS Import/Export .....	97
PictureGear Pocket .....	26
World Alarm Clock .....	59

## P

PhotoStand .....	23
PictureGear Pocket	
Displaying image files one after another (PhotoStand) .....	23
Making a PhotoStand setting .....	23
Menu items .....	27
Saving image files stored on a Memory Stick media to your CLIÉ handheld (Import) .....	21
Saving image files stored on your CLIÉ handheld to a Memory Stick media (Export) .....	20
Starting PhotoStand .....	24
Transferring image files to your CLIÉ handheld .....	12
Viewing image files stored in Memory Stick media .....	18
Viewing image files stored in your CLIÉ handheld .....	12
Viewing image files with your CLIÉ handheld .....	14

Viewing sample image files .....	25
What you can do with PictureGear Pocket .....	10

Playing movie files	
See "gMovie player"	

## S

Standard MIDI File Format 0 sound data .....	74
Sound Utility/Sound Converter	
Changing the name of a sound data ...	81
Deleting a sound data .....	80
Playing sound data on your CLIÉ handheld .....	79
Setting an imported sound data as an alarm sound .....	78
Sorting the sound data list .....	81
Transferring sound data to your CLIÉ handheld .....	77
What you can do with Sound Converter/Sound Utility .....	74

## V

Viewing image files	
See "PictureGear Pocket"	

## W

WAVE format sound data .....	74
Windows 2000 .....	94, 96
Windows Me .....	94, 96
World Alarm Clock	
Menu items .....	60
Setting the clock alarm .....	55
Stopping the alarm .....	58
Viewing world time .....	54
What you can do with World Alarm Clock .....	52

# Appendix

## Manufacturing companies supported by the CLIÉ Remote Commander application

### Note

Some devices cannot be remote-controlled depending on its model or the year of its production.

### TV

Sony, Akai, Emerson, General Electric, Hitachi, JVC, Magnavox, Mitsubishi/MGA, NEC, Panasonic, Philips, Pioneer, RCA/PROSCAN, Samsung, Sanyo, Sharp, Symphonic, Toshiba

### VCR

Sony, Aiwa, Akai, Emerson, Funai, General Electric, Hitachi, JVC, Magnavox, Mitsubishi/MGA, NEC, Orion, Panasonic, Philips, Pioneer, RCA/PROSCAN, Samsung, Sanyo, Sharp, Symphonic, Toshiba

### DVD

Sony, Aiwa, Denon, Harman/Kardon, Hitachi, JVC, KLH, Onkyo, Panasonic, Philips, Pioneer, RCA, Samsung, Sharp, Shinco, Sylvania, Thomson, Toshiba, Yamaha, Zenith

### AV-AMP (amplifier)

Sony, Kenwood, Onkyo, Pioneer, Technics, Yamaha



For the latest support information,  
check our official Sony CLIE Web site

**<http://www.sony.com/clie/>**

<http://www.sony.net/>