

# ***Reversi*** *Version 1.0*

## Operating Instructions

- Sony, **SONY**, CLIÉ, **CLiÉ**, CLIÉ GEAR, **CLiÉ GEAR**, Jog Dial and Memory Stick are trademarks of Sony Corporation.
- Palm OS and HotSync are registered trademarks of Palm, Inc. or its subsidiaries. Palm Desktop and the HotSync logo are trademarks of Palm, Inc. or its subsidiaries.
- Microsoft and Windows are registered trademarks of Microsoft Corporation in the U.S. and other countries.
- The Bluetooth trademarks are owned by their proprietor and used by Sony Corporation under license.
- All other trademarks are trademarks of their respective owners. In the text of this Operating Manual, ™ and ® marks are not written.

Before using this software, please read the Software License Agreement that is supplied with CLIÉ handheld.

- Copying all or part of the contents of this software, sample images, and operating Manual, or renting the software are prohibited by copyright laws.
- The Company is not liable for damage or loss resulting from the use of this software, or for any claim from a third party.
- The Company assumes no responsibility aside from the replacement of media due to manufacturing fault.
- This software must not be used in a system other than that specified.
- The software specifications may be subject to change without notice.

---

# Table of Contents

What You Can Do with Reversi .....	4
Installing .....	5
Before Installing .....	5
Installing the Application .....	5
Performing Communication between two CLIE Handhelds .....	7
Communicating with a New Player .....	7
Communicating with the Player You Opposed Last Time .....	9
Playing the Game of Reversi .....	10
Writing in the Memo Pane .....	11
Starting a New Game .....	12
Ending a Game .....	12
Changing the Setting .....	13
Turning off the Game Sound .....	13
Setting the Sleep Function for the Time When You Are Playing Reversi .....	14

---

# What You Can Do with Reversi

Reversi is a game application that allows you to play against another player, using two CLIE handhelds in which the Bluetooth™ Module is inserted. In the game of Reversi, two players alternately place a black piece and a white piece on the game board. If you place black pieces, your opponent places white pieces. Place your pieces to capture your opponent's pieces between yours. The color of the captured pieces changes to the same color as your pieces. The player with the most pieces wins the game.

## **Sending a message**

You can write a message freely in the Memo pane, and send it to your opponent while you are playing the game.

---

# Installing

## Before Installing

The Reversi application can be used only with a CLIÉ handheld (OS Version 4.0 or later) supporting the Bluetooth Module.

### Note

You cannot use this application with the devices (e.g. a personal computer) supporting Memory Stick, or with a CLIÉ handheld that is adaptable for the Bluetooth adapter (PEGA-BT700).

## Installing the Application

You need to install the [Bluetooth Preferences Utility] from the supplied installation CD-ROM to your CLIÉ handheld in advance.

For installation, you need a personal computer in which the Palm Desktop application that is suitable for your CLIÉ handheld is installed. Connect the computer to the CLIÉ handheld, and make sure that a HotSync operation can be performed properly on both the computer and the CLIÉ handheld.

### 1 Perform a soft reset on your CLIÉ handheld.

For details on how to perform a soft reset, see the Operating Instructions of your CLIÉ handheld.

### 2 Insert the supplied CD-ROM into the CD-ROM drive of your personal computer.

The installer starts and the initial screen appears.

### Tip




If the installer does not start automatically, double-click [setup] (setup.exe). You can find it in the CD-ROM.

### 3 Proceed with the installation, following the installer's instructions.

On the user name selection screen, select a user's name.

### Note

If you want to use more than one CLIÉ handheld, you need to install this application in each CLIÉ handheld.

- 4** Click [Done] when the installer-closing screen appears. Your computer is ready to install the Reversi application to your CLIÉ handheld. In the next step, you will perform a HotSync operation to carry out the installation.
  
- 5** Click the  icon on the task tray that is located in the lower right corner of your computer display. Check that [Local USB] is ticked in the shortcut menu on the display.  
  
** If you cannot find the  icon on the task tray**  
From the [Start] menu, click [Programs] ([All Programs] in Windows® XP), [Sony Handheld], and [HotSync Manager] to start up the HotSync manager.
  
- 6** Execute a local HotSync operation on your CLIÉ handheld. The Reversi application is installed into your CLIÉ handheld.

# Performing Communication between two CLIÉ Handhelds

Reversi is a game application that allows you to play against another player, using two Bluetooth compatible CLIÉ handhelds. To begin a game, you need to perform wireless Bluetooth communication between the two CLIÉ handhelds.

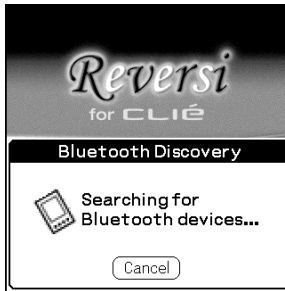
## Communicating with a New Player

When you play against a new opponent, follow the procedure below.

- 1 Start up the Reversi application on the home screen of your CLIÉ handheld and your opponent's CLIÉ handheld.



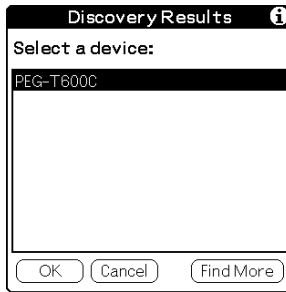
- 2 Tap [New Discovery].  
A Bluetooth compatible device discovery begins in the vicinity of your CLIÉ handheld.



When the discovery ends, the name of the Bluetooth compatible device that has been found around your CLIÉ handheld is displayed.

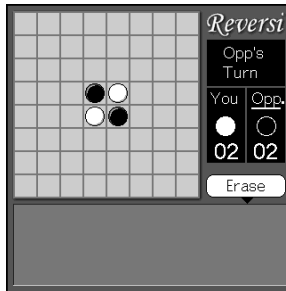
Continued on next page

**3** Select your opponent's device.



**4** Tap [OK].

The two CLIE handhelds start wireless communication, and the game screen appears on both devices.



**Tips**

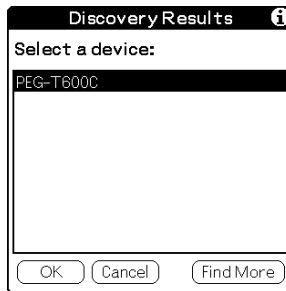
- Depending on radio wave conditions, it may take time to complete a device discovery and establish communication.
- If it takes too long time to complete a device discovery, tap [Cancel] on the discovery screen, and conduct a device discovery again.
- If the device discovery fails in detecting your opponent's device, conduct a discovery again.
- Even if the device discovery has detected your opponent's device successfully, it is impossible to communicate with it if your opponent has not started up the Reversi application.



## Communicating with the Player You Opposed Last Time

The result of the last device discovery is stored on your CLIÉ handheld. Therefore, it is quicker for you to communicate with the player you opposed last time than search for a new player.

- 1 Start up the Reversi application on the home screen of your CLIÉ handheld and your opponent's CLIÉ handheld.**
- 2 Tap [Last Discovery Result].**  
The device that was found in the last device discovery is displayed.



- 3 Select your opponent's device.**  
The two CLIÉ handhelds start wireless communication, and the game screen appears on both devices.
- 4 Tap [OK].**

### Tips

- Depending on radio wave conditions, it may take time to establish communication.
- If your opponent has not started up the Reversi application, it is impossible to communicate with your opponent's device.

# Playing the Game of Reversi

In the game of Reversi, two players alternately place a black piece and a white piece on the game board. If you place black pieces, your opponent places white pieces. Place your pieces to capture your opponent's pieces between yours. The color of the captured pieces changes to the same color as your pieces. The player with the most pieces wins the game.

Start a game after establishing wireless communication with your opponent.

## Notes

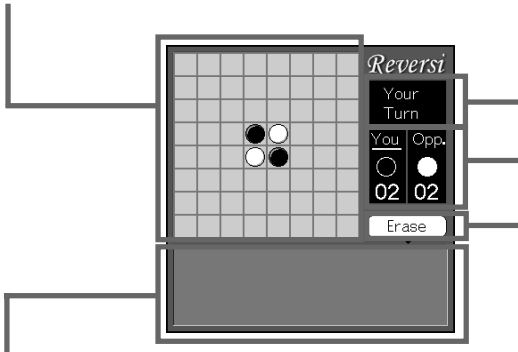
- Use the stylus to play Reversi. You cannot use the Jog Dial navigator of your CLIÉ handheld to play this game.
- If the automatic power-off function works on your CLIÉ handheld or if the Bluetooth communication range is exceeded in the middle of a game, the game session stops. In this case, the data on this game is not stored on your CLIÉ handheld.

## Game board

Players place their pieces alternately on the square of the board.

## Turn display

Displays whose turn it is.



## Piece counter

Displays the number of pieces each player has captured.

## Memo pane

Write freely with the stylus. Your memo can be seen on the screen of your opponent's CLIÉ handheld.

## Memo eraser

Erases the memo written in the Memo pane.

## Rules

The following is a brief explanation of the rules.

- When wireless communication is established and the game screen appears, Reversi automatically sets the color (black or white) of the pieces each player should use. You cannot change the color you use.
- In the beginning position, two black pieces and two white pieces are placed alternately in the center of the board. The player who has a black piece makes the first move. To place a piece, tap the square on which you want to place your piece with the stylus.
- Place your pieces to capture your opponent's pieces between yours. The color of the captured pieces changes to the color of your pieces. The player with the most pieces at the end of the game wins.
- You can capture your opponent's pieces between yours vertically, horizontally or diagonally.
- If you have no way to capture your opponent's pieces, you miss a turn. In this case, your opponent places a piece twice in succession.
- When both players have no pieces to place, the game ends. The player who has more pieces of his/her own color is a winner.

## Writing in the Memo Pane


You can write a message freely in the Memo pane, and send it to your opponent while you are playing the game.

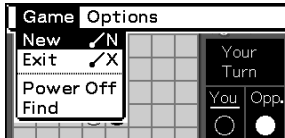
If one player writes a message or draws a picture in the Memo pane, they are displayed in the corresponding pane of the other player's CLIE handheld.

## Erasing a message

Tap [Erase].


## Starting a New Game

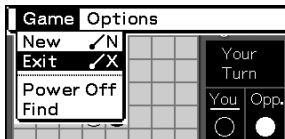
- 1 Tap the  Menu icon of the CLIÉ handheld on the game screen.  
The game menu appears.



- 2 Tap [New].  
The game-starting screen appears.  
Two black pieces and two white pieces are positioned alternately in the center of the board.

## Ending a Game

- 1 Tap the  Menu icon of the CLIÉ handheld on the game screen.  
The game menu appears.



- 2 Tap [Exit].  
The communication is cut off. The initial screen of Reversi appears, and the game ends.


**Tip**

You can also end a game by tapping the  Home icon of the CLIÉ handheld.

# Changing the Setting

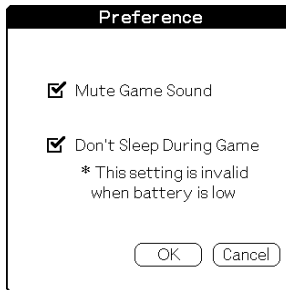
## Turning off the Game Sound

The game sound is set to On at the factory presetting.  
To turn off the game sound, follow the procedure below.

- 1 Tap the  Menu icon of the CLIÉ handheld on the game screen.  
The menu appears.
- 2 Tap [Options] of the menu bar.  
The option menu appears.
- 3 Tap [Preference] of the menu.  
The preferences screen appears.



- 4 Tap and tick the check box of [Mute Game Sound].



- 5 Tap [OK].  
The game screen appears.

### Tip

The [Mute Game Sound] setting is valid only when you are using the Reversi application.


It is not valid for other applications for the CLIÉ handheld.

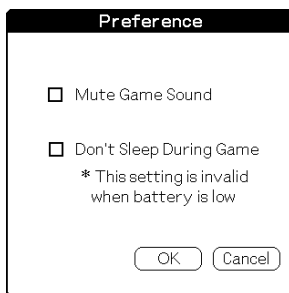
## Setting the Sleep Function for the Time When You Are Playing Reversi

At the factory default setting, the sleep function is set to Off, so it will not work while you are playing Reversi.

If you want to turn this function on, follow the procedure below.

With this function on, the CLIE handheld enters the sleep mode if it is not operated for a certain period of time.

- 1** Tap the  Menu icon of the CLIE handheld on the game screen.  
The menu appears.
- 2** Tap [Options] of the menu bar.  
The option menu appears.
- 3** Tap [Preference] of the menu.  
The Preference screen appears.
- 4** Tap the check box of [Don't Sleep During Game] to erase the tick of this item.



- 5** Tap [OK].  
The game screen appears.  
Tapping [Cancel] cancels the above operations and sets the sleep function to Off again.

### Setting the sleep function to Off

In Step 4, tap the check box of [Don't Sleep During Game] to tick this item. The CLIE handheld does not enter the sleep mode while you are playing Reversi.

